



**Cambridge Aero Explorer™ for Windows®
Version 1.0**

User's Guide

June 1, 2001

Copyright

Copyright© 2001 by Cambridge Aero Instruments All Rights Reserved
First Edition 2001

Trademarks

Aero Explorer is a trademark of Cambridge Aero Instruments.
Microsoft and Windows are registered trademarks of the Microsoft Corporation.
All other trademarks or registered trademarks are owned by their respective holders.

Mailing address:

Cambridge Aero Instruments, Inc.
1565 Dancy Blvd.
Horn Lake, MS. 38637
USA

Shipping address:

Cambridge Aero Instruments, Inc.
1565 Dancy Blvd.
Horn Lake, MS. 38637
USA

Telephone: 01-(662) 280-7610

Fax: 01-(662) 280-7609

Website: www.cambridge-aero.com

Table of Contents

Chapter 1. Introduction.....	1
Overview of the Program	1
Terminology	1
Customer Support	2
Chapter 2. Getting Started.....	3
Installing the Software	3
Starting Cambridge Aero Explorer	3
The Cambridge Aero Explorer User Interface	3
Icons in the Recorder and PC Panes	4
Click and Drag Operations.....	5
Command Menu Operations.....	6
Right-Click Menu Operations.....	6
Tips and Tricks.....	6
Program Setup	8
Navpoint files	8
Special Use Airspace files	11
Tasks	11
A Guided Tour.....	13
Displaying a flight	14
Displaying navpoints	14
Displaying airspace	15
Hide the explorer bar.....	15
Zoom	15
Animate flight	15
Defining and displaying a task	15
Chapter 3. Communication with Data Recorder.....	18
Connecting to recorder.....	18
Recorder Properties	18
Log Manager	19
Transferring data to the recorder prior to taking off	20
Transferring flight logs from the recorder after landing	20
Using Flashcards	20
Transferring data to the recorder via a flashcard	21
Transferring flights from the recorder via a flashcard.....	21
Chapter 4. Flight Display.....	22
Introduction	22
Display Options	22
Display Control.....	23
Zoom	24
Making the Display Follow a Flight.....	24
Displaying Multiple Flights	24
Chapter 5. Appendix	26
Menu Commands	26
Right-Click Menu Commands	28
Troubleshooting.....	30
Program Installation	30
Can't connect to recorder	30

Cambridge Aero Explorer User's Guide

File Format.....	31
IGC – File Format.....	31
Special Use Airspace File Format.....	31

Chapter 1. Introduction

Overview of the Program

This manual explains how to use the Cambridge Aero Instruments flight management software, Cambridge Aero Explorer™. This program is a powerful tool that lets you manipulate, view and analyze your flights graphically using a simple point and click interface. Cambridge Aero Explorer also facilitates work with navigation point databases and special use airspace files. This program can communicate with your Cambridge GPS or Pocket-Nav flashcard. Tasks can be defined with this program and loaded into your data recorder or viewed graphically together with a flight log.

Cambridge-Aero Explorer is designed for anyone wishing to interface with their Cambridge recorder and view flight log files stored in either IGC or CAI format. The program runs on IBM or compatible hardware using Microsoft® Windows® 95, 98, 2000 or Windows ME. Navigation point databases are viewed in Cambridge .dat format. The software can communicate with a flashcard reader installed on a Windows system as a removable drive. To communicate with a Cambridge Model 10,20 or 25 GPS, you must have the unit connected to your computer on a working serial port.

Terminology

Windows terms

These terms describe how to use the program.

Click - Select an item by moving the mouse pointer to the item, then pressing and releasing the left mouse button.

Click and drag - Move the mouse pointer to the item, then press and hold the left mouse button while moving the item to another location on the screen. Release the mouse button when over the desired location on the screen.

Right-click - Move the mouse pointer to the item, then press and release the right mouse button. This generates a context-sensitive menu of commands for that item.

Right click menu - A context-sensitive menu that appears when you right-click an item. The commands on the menu are specific to that item. Right-click menus can help you more quickly execute commands on an item.

Shift-click and drag - Hold down the **Shift** key while clicking and dragging an item.

Ctrl+key - Hold down the **Ctrl** key while you press a second key. For example, **Ctrl+C** means hold down the **Ctrl** key, press the **C** key, and then release both keys.

Shift+key - Hold down the **Shift** key while you press a second key. For example, **Shift+C** means hold down the **Shift** key, press the **C** key, and then release both keys.

Program terms

These terms describe the Cambridge Aero Explorer program and related components.

Data file (.dat file) - A text file containing an ordered list of navpoints. These are the same files as used in Pocket-Nav software and GPS-NAV products.

Default flight log folder - A directory (folder) on your computer's hard drive where the program stores flight logs transferred from a recorder.

Flashcard - A standard compact flash memory card used by a Compaq Aero 1520, 1550 or similar hand held computer.

Flight file (.cai or .igc file) - A file containing data generated by a GPS recorder that is a record of the glider's flight. Files with a .cai extension are in a Cambridge proprietary

format. Files with the **.jgc** extension are in a standard format defined by the IGC (International Gliding Commission).

GPS-NAV - A Cambridge Aero product such as the model 20 GPS receiver/data logger. A GPS unit stores a navpoint database, pilot preferences, and flight logs recorded by the recorder. The Cambridge Aero Explorer program can read and update all information stored in the Cambridge GPS-NAV units.

Model 20, Model 25 - Cambridge-Aero GPS-NAV products.

Navpoint or Navigation Point - A point used for navigation by glider pilots in flight, defined by latitude, longitude and elevation. They also have attributes to describe how the pilot can use the point. Navpoints are saved in data (.dat) files.

Pocket-Nav - A Compaq Aero 1520, 1550 or similar hand held unit running Cambridge Aero Pocket-NavCE2 or Pocket-NavCE3 software.

Secure data logger - A GPS unit that records a flight log during flight. It contains both hardware and a software security system to prevent alteration of the log after the flight is complete.

Special Use Airspace file (.sua file) - A data file that contains information about an airspace that is restricted for flight by a government authority. Cambridge Aero Explorer can display these files together with a flight log to ensure compliance with government rules. This file is the same as those used by Pocket-Nav software.

Turnpoint - A point within a list of navpoints that has been defined as a goal within a task.

Workspace - Equivalent to a folder on your computer's hard drive or removable drive. The default workspace in the program is the folder where you installed the Cambridge Aero Explorer software (**C:\Program Files\CAI**). You can define as many workspaces as needed.

Customer Support

If you experience problems with your version of Cambridge Aero Explorer or have questions about its operation, our website has extensive technical data on all of our products and may contain the answer to your question. You can reach our website by typing the following web address in your Internet browser:
<http://www.cambridge-aero.com>.

You can get access the Cambridge Aero Explorer web site directly from the program. From the **Help** menu, choose **Web Support**. This starts your Internet browser and displays the support page (if an Internet connection is available).

Chapter 2. Getting Started

Installing the Software

From CD-ROM

1. Insert the Cambridge Aero Explorer CD-ROM your computer's CD-ROM drive. The installation program starts if your computer is configured to automatically run the CD-ROM install program.
2. If the installation program doesn't start, double-click the My Computer icon normally located in the top left corner of the Windows desktop screen. Double-click the CD-ROM drive icon, and then double-click the **Setup.exe** program to start the installation program.

From Internet File

To download the Cambridge Aero Explorer from the Internet, follow these steps.

1. Go to the Cambridge Aero website at <http://www.cambridge-aero.com>.
2. Click the link for Aero Explorer
3. Follow the directions on the page to download the program. **Make sure you note the directory where your computer saves the downloaded file.**
4. After downloading the file, double-click the My Computer icon normally located in the top left corner of the Windows desktop screen.
5. Double-click the hard drive icon, and then navigate to the directory where you stored the installation program.
6. Double-click the installation program to install the software.

Note: The installation program searches for the older Cambridge DOS-based flight viewing software on your C: or D: hard drives in a folder names **CAI**. If it locates the old DOS-based program, it automatically creates workspaces for your existing files.

Starting Cambridge Aero Explorer

The software installation procedure automatically places an icon on the desktop of your computer labeled **Cambridge Aero Explorer**. Double click this icon to start the program or go to **Start**, point to **Programs**, then to **Cambridge Aero Explorer**.

The Cambridge Aero Explorer User Interface

The Cambridge Aero Explorer uses the standard Windows interface components.

The title bar is located at the top of the screen and contains the title of the program.

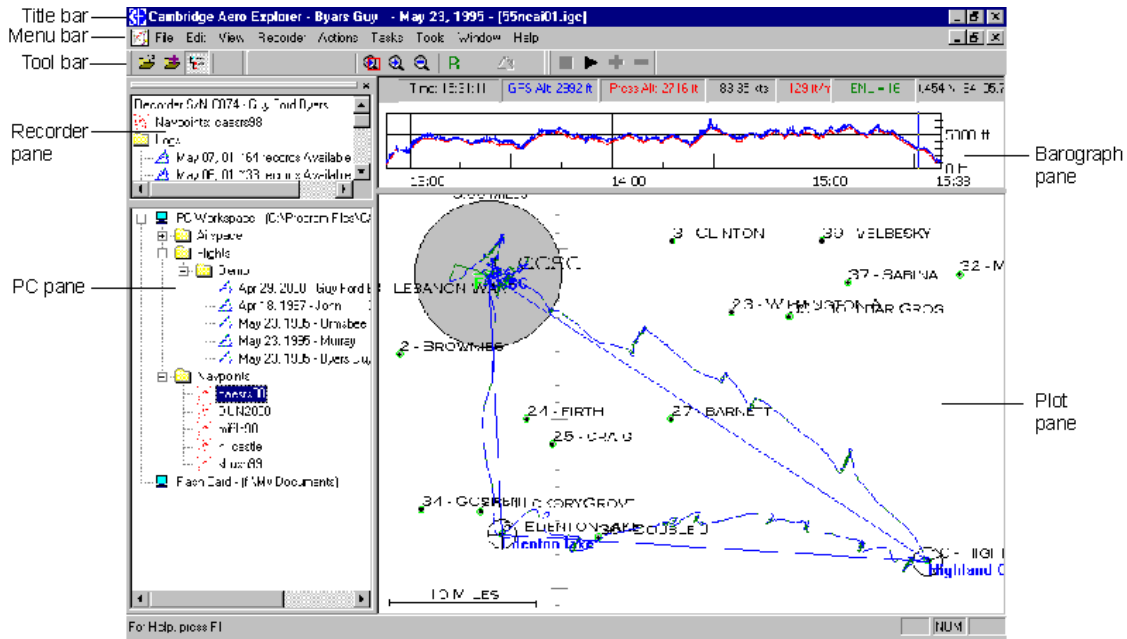
The menu bar contains the names of the command menus.

The toolbar contains a row of buttons representing commands. You can use the buttons to quickly choose a command, instead of choosing the command from a menu.

The **Recorder pane** is the upper-left pane. It shows the contents of the GPS recorder if one is connected to the computer.

The PC pane is the lower-left pane. It displays the contents of the workspaces on your computer and any removable drives (flash card, floppy diskette, etc...)

The right side of the program window is for graphical displays of flights, tasks, and navpoints. It is divided into the **Barograph pane** (upper-right) that displays a vertical profile of the flight, and the **Plot pane** (lower-right) that displays a 3 dimensional view of the flight.









Icons in the Recorder and PC Panes

The PC and Recorder panes of the Explorer bar allow you to quickly and easily find, organize and manage the files you need to work with your Cambridge recorder. When working with these panes, you will see numerous entries in a cascading tree structure. Each entry has an icon and a label associated with it.

Recorder pane icons

Entry	Icon	Description
Recorder Not Connected		No Cambridge recorder attached to the computer.
Recorder Connected		Recorder is connected to the computer; displays the pilot's name and recorder serial number.
Task Folder		Organizes tasks in the recorder.
Task		A task stored in the recorder.
Log Folder		Organizes logs stored in the recorder
Available Log		A recorded flight log available to transfer to the PC. It displays the flight date and the approximate number of fixes made during that flight. Double-clicking the entry transfers it to the PC.
Transferred Log		A flight log transferred to the PC. It displays the location of the log on the PC. Note: If you saved this log in a folder other than the default flight log folder, this log will appear as an "Available Log" instead of a "Transferred Log." Double-clicking the entry transfers it to the PC, and the program asks if you wish to create a new version of the flight.
Navpoints		Navpoints stored in the recorder. It displays the name of the navpoint file transferred to the recorder.

PC pane icons

Entry	Icon	Description
Workspace		Represents a directory (folder) on the computer's hard drive or a removable drive or flashcard. Double-clicking the icon expands or collapses the folders in this workspace so you can see its contents. The right and left arrow keys also expand or collapse the workspace.
Directory Folder		Represents a folder on your hard drive, removable drive, or compact flashcard. You can expand or collapse the folder to see its contents.
Navpoints		A navpoint (.dat) file. Double-clicking the icon displays the navpoints in the Display pane.
SUA files		A Special Use Airspace (.sua) file. Double-clicking the icon displays the airspace in the Display pane.
Log in IGC Format		A flight log (.igc) file, stored in standard IGC format. Double-clicking the icon displays the flight in the Display pane.
Log in CAI Format		A flight log (.cai) file, stored in a standard IGC format. Double-clicking the icon displays the flight in the Display pane. The program creates a log in IGC format if one does not exist when you perform any action on it.

Click and Drag Operations

You can use your mouse to click and drag icons to accomplish various tasks. This is also called “drag and drop”, since you drag a copy of the icon across the screen, then drop (release the mouse button) the icon on the desired pane. Refer to the rest of this manual for more information on the tasks listed below.

Displaying a file

You can display the contents of a navpoint, special use airspace, or flight log file in the Display pane by clicking and dragging the desired icon from the PC pane to the Display pane. In addition, you can overlay multiple files by repeating the step of clicking and dragging additional files to the Display pane.

Transferring a file

You can transfer files between the recorder and the computer. The following operations are supported:

- Transfer navpoint files to the recorder by clicking and dragging the navpoint icon from the PC pane to the recorder entry in the Recorder pane.
- Transfer navpoint files from the recorder by clicking and dragging the navpoint icon from the recorder pane to a folder in the PC pane.
- Transfer flight log files from the recorder by clicking and dragging the flight log icon from the recorder pane to a folder in the PC pane.
- You can also click and drag a flight file from the Recorder pane directly to the Display pane. The program displays the flight, and also transfers the flight file to the default flight log folder.

Moving a file

You can move navpoint, special use airspace, or flight log files between different workspaces on the computer. Simply click and drag the file to the desired folder.

Copying a file

You can copy navpoint, special use airspace, or flight log files between different workspaces on the computer. Press and hold the **Ctrl** key while you click and drag the file to the desired folder.

Command Menu Operations

The menu bar in the Cambridge Aero Explorer contains all the commands that you use to accomplish tasks in the program. Many of the commands, such as those on the **Action** menu, apply to the currently selected item (file or folder) in the Recorder or PC pane.

1. Select the desired navpoint, special use airspace, flight file, or folder in the Recorder or PC pane.
2. Click the desired menu on the menu bar, or press the **Alt** key + the underlined letter in the menu name. For example, press **Alt+F** to select the File menu.
3. Click the desired command in the menu, or press the underlined letter in the command name.

Some commands don't apply to a selected item. For example, the commands on the **File**, **View**, **Recorder**, and **Window** menus do not apply to a selected item. For these commands, simply choose the command from the menu without first selecting an item.

Note: If a command is unavailable (grayed out), that means the command has no application in the current context. For example, the commands on the Window menu are unavailable if there are no navpoint, special use airspace, or flight files displayed. For another example, commands that apply only to flight files are unavailable if no flight is selected in the Recorder or PC pane.

The commands in the Cambridge Aero-Explorer program are described in the Appendix.

Right-Click Menu Operations

When you right-click an icon or folder in the PC or Recorder pane, the program displays a menu of commands. The menu is context-sensitive, which means the commands on the menu apply specifically to the right-clicked icon. This gives you a quick and easy way to accomplish many tasks simply by right-clicking an icon and choosing the command to apply to the icon.

You can also right-click in the Plot pane when a navpoint, special use airspace, or flight file is displayed for a menu of commands that apply to the Plot pane.

Tips and Tricks

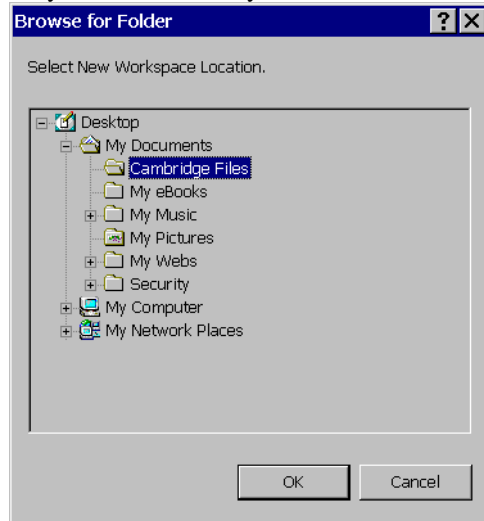
This section of the manual contains suggestions on how to effectively utilize the PC and Recorder panes to organize your files. It is assumed that you have completely read this section of the manual on how to manage files before proceeding.

I like to have all my important files on my computer in one place, so I want to store all my logs and navpoints in the "My Documents" system desktop folder. How is this done?

Windows 98 systems and later have adopted the "My Documents" folder as a way of organizing the users files in a single place where they can easily be backed up. Some users may find it convenient to have their Cambridge files also saved under this folder. To do this, follow these steps:

1. First, make sure there is a "My Documents" folder on your desktop. If it is not there, consult your Windows help system for instructions on how to create it.

2. Double click on the “My Documents” folder on the Desktop to open it. Once opened right click in that folder and from the **New** menu, select **Folder**. Type in “Cambridge Files” as the name for this new folder.
3. Start the Cambridge Aero Explorer and from the **File** menu, choose **New Workspace....**
4. From the browse for Folder dialog, select the “Cambridge Files” folder under the “My Documents” entry. Then click OK.



5. A new workspace has been created in your PC pane and appears as the last entry there. It will have a long and confusing name like: “**New Workspace - (C:\Documents and Settings)\...\Cambridge Files**”. If desired, you can rename it to something more meaningful. Right click on this new workspace and select the “**Rename**” menu. Type in a new name, like “My Cambridge Files”, then press the Enter key.
6. Right click on this workspace and select “New Folder”. Then type in “Flights” as the name of this folder.
7. To have your flights transferred to this “Flights” folder from future connections with the recorder, right click on the “Flights” folder and select “**Set as Default – Flight Log Folder**”.

Now whenever you transfer a flight log to your PC from the recorder, it will be created under your “My Documents” folder. Additional folders for Navpoints and Airspace can also be created in this workspace to organize other files.

I want to organize my flights by year. What is the best way to do this?

Follow steps 1-5 above to create a “Cambridge Files” workspace in your “My Documents” folder. Then follow these steps:

1. Right click on the workspace and select “**Create Folder**” from the menu. Type in “Flights during 2001” as the name for that new folder.
2. Right click on this new folder and select “**Set as Default – Flight Log Folder**”.
3. You can import any flights you have already made this year by right clicking on the folder and selecting the “**Import Files...**” from the menu. You can select one or more files from the next dialog and they will be copied to the folder.

Program Setup

Navpoint files

Introduction

Navpoints are navigation points used by soaring pilots during their flights. They are defined by latitude, longitude and elevation. They also have attributes to describe how the pilot may use the point. Each navpoint can have one or more attributes. The following table describes the meaning of each navpoint attribute:

Attribute	Description
Home	The home airfield for this navpoint database. The name of this point is shown when navpoints are displayed.
Start	Indicates a start point for a task. A navpoint must have this attribute in order to appear in the selection list for start gate points.
Finish	Indicates a finish point for a task. A navpoint must have this attribute in order to appear in the selection list for finish gate points.
Airfield	Indicates an established airfield.
Turnpoint	Indicates a turning point in a task. A navpoint must have this attribute set in order to appear in the turnpoint selection list when specifying a task.
Landable	Indicates a field where safe landings can possibility be made.

Managing and editing navpoint files can be crucial to effective cross-country soaring. Over time, landable locations and airfields change. Pilots who use Cambridge Aero instruments often keep custom databases of navpoints that reflect local conditions.

Creating

To create a new navpoint database use the following steps.

1. From the **File** menu point to **New**, then choose **Navpoints**. The dialog box that opens is identical to the navpoint edit screen described below with the exception that there is no list of navpoints on display.
2. Enter you navpoints one at a time. Fill in the all the information for your navpoint, and then click **Apply**. The navpoint will then appear in the list. Repeat this process until you have entered all your navpoints.
3. Review the navpoints in the list and verify they are correct. To change a navpoint, click that navpoint in the list to display its information in the fields above. Make the appropriate changes and click **Apply** or press the **Enter** key. **Note:** You must either click **Apply** or press the **Enter** key for changes to a navpoint to be accepted.
4. When you are satisfied with your list of navpoints, click **Close** or **Save As**. The program prompts for the file name for this navpoint database. A common convention is to use the name of the home airport followed by the last two digits of the year. For example, you might use Uvalde in the 2001 contest would be **uvalde01.dat**.

Hint: Clicking **Import** at the bottom of the screen opens a browse window to select a list of navpoints from another file. The program reads the navpoints from the file and automatically enters them in the list for you. This is useful because the task of creating a custom navpoint list often begins with an existing list of navpoints.

Editing

Right click on any navpoint file in the **Navpoint** folder in the PC pane and select **Edit** from the menu. This opens the navpoint-editing dialog box.

ID	Name	Latitude	Longitude	Attribu
1	CCSC	39° 28.610 N	84° 05.360 W	H A T
2	Brownies	39° 23.817 N	84° 12.167 W	A T
3	Clinton	39° 30.433 N	83° 51.617 W	A T
4	Dayton Wrigh	39° 34.950 N	84° 13.700 W	A T
5	Edenton Lake	39° 13.200 N	84° 04.350 W	T
6	Fayette Co.	39° 33.883 N	83° 25.533 W	A T
7	Greene Co Ap	39° 41.650 N	83° 59.033 W	A T
8	Grimes Field	40° 08.000 N	83° 45.000 W	A T
9	Hamilton Apt	39° 21.717 N	84° 30.933 W	A T
10	Highland Co	39° 11.517 N	83° 32.050 W	A T
11	Hook Muni	39° 32.183 N	84° 23.217 W	A T
12	Jamestown La	39° 38.900 N	83° 46.850 W	T
13	Lebanon Warr	39° 27.367 N	84° 15.150 W	A T
14	Madison Co	39° 55.983 N	83° 27.300 W	A T

The navpoints that make up this file are initially listed in ascending numeric order. However, you can sort the list by clicking on the column title bar to sort by the value in that column. For example, if you click the **Latitude** bar at the top of the column, the program resorts the list by latitude. Clicking on the column header a second time inverts the sort order. **Note:** If any navpoints are added or changed, you will need to re-sort the column.

You can edit all of the attributes of individual navpoints in this screen. Pay careful attention to navpoint attributes. A site listed as an airfield is not automatically a contest eligible turnpoint. Competition managers at different soaring sites designate lists of turnpoints for contest use in their area

Clicking any navpoint in the list allows you to change the properties of that point. The program displays the values for the selected point. Once you have made changes to a navpoint, click **Apply** or press the **Enter** key. **Note:** You must either click **Apply** or press **Enter** for your changes to be accepted.

To remove navpoints from the list, select the navpoint in the list, then click **Delete** or press the **Delete** key.

Clicking **Import** prompts you to browse your computer for a navpoint file to be read and inserted in your list. Navpoints in the list with the same ID number as those read from the file will be replaced.


Click **Save As** to save an edited list under a different name. Click **Close** to apply any changes you make in the list and close the dialog box.

Click **Cancel** to discard any changes you have made.

Downloading navpoints from the Internet


Many pilots prefer to use lists of navpoints that have already been created for a favorite soaring site. The most well known web site to download navpoints from is the "Worldwide Soaring Turnpoint Exchange". The following instructions are applicable to that site only. To download a navpoint database from this site, follow these steps:

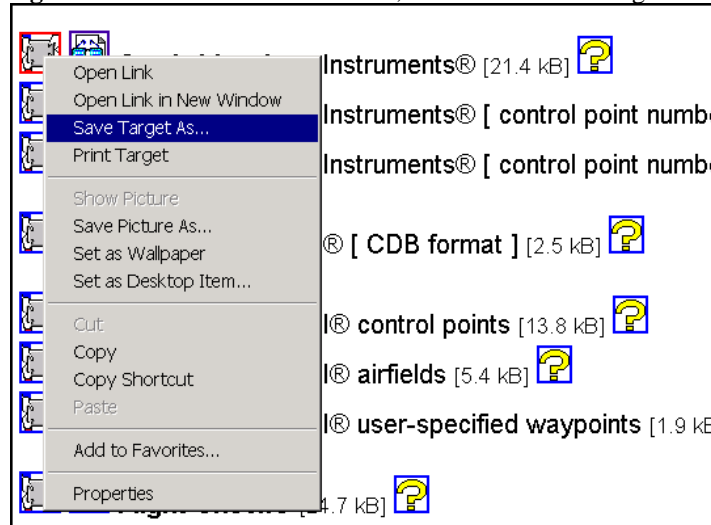
1. Start the Cambridge Aero Explorer. By default, you should see a folder called "Navpoints" under the first workspace in the PC pane. Right click on the "Navpoints" folder and select "Properties..." from the menu.
2. Look at the "Properties..." dialog and you will see an entry for "Folder Location". If you took the defaults during installation this will be:
"C:\Program Files\CAI\Navpoints"
Remember this location or better yet, write it down on a piece of paper.
3. Now start your web browser and open the following page:
<http://acro.harvard.edu/SOARING/JL/TP/HomePage.html>
4. Find your soaring site from the pages on this web site. They are organized by continent, then country, then state. When you find the page for your site, scroll down to the line:

 **Files formatted for downloading and importing into your programs.**
Then click on the icon shown at the left.

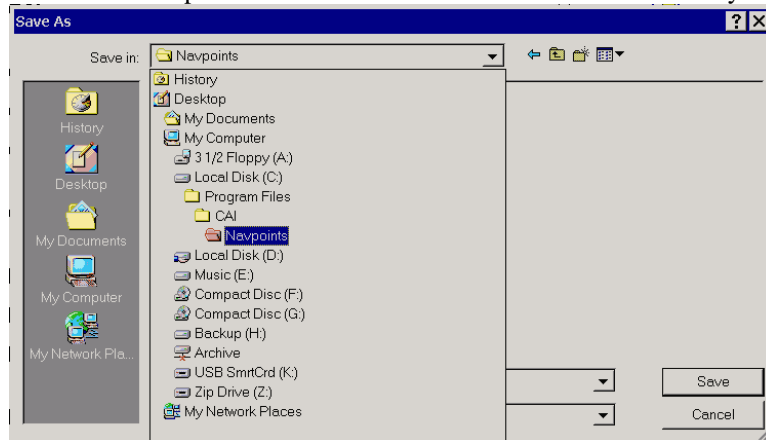
5. From this page, scroll down until you see the entry

  **Cambridge Aero Instruments®**

Right click on the leftmost icon , and select "Save Target As..." from the menu.



- Now you will see a form asking where to save these navpoints on your computer. Click on the drop down list next to “Save in” and select the folder you saw in step 2.



- After selecting the correct folder, select “**Save**”.
- Now restart the Cambridge Aero Explorer, and open the Navpoint folder you identified in step 1. The navpoints you downloaded from the Internet should be visible there.

Special Use Airspace files

Introduction

A special use airspace file (SUA file) is a data file containing information about airspace that is restricted for flight by a government authority. Cambridge Aero Explorer can display SUA files together with a flight log to ensure compliance with government rules. This file is the same as those used by Pocket-Nav software.

SUA files are text files that define sectional data such as the altitude and radius of class C airspace around a major airport. Detailed information on how to create and edit SUA files can be found at <http://acro.harvard.edu/SOARING/JL/TP/sua.html>.

Editing and Displaying.

Right click on the SUA file in the PC pane and select **Edit** to edit the text of an SUA file. SUA files are edited in the text-editing program installed on your computer, such as Microsoft Notepad.

To view the file graphically, click and drag the file to the Plot pane. If a corresponding flight is already displayed in the Plot pane, the program overlays the SUA. Alternatively, you can right click the SUA file and chose **Overlay**.

Downloading SUA files from the Internet

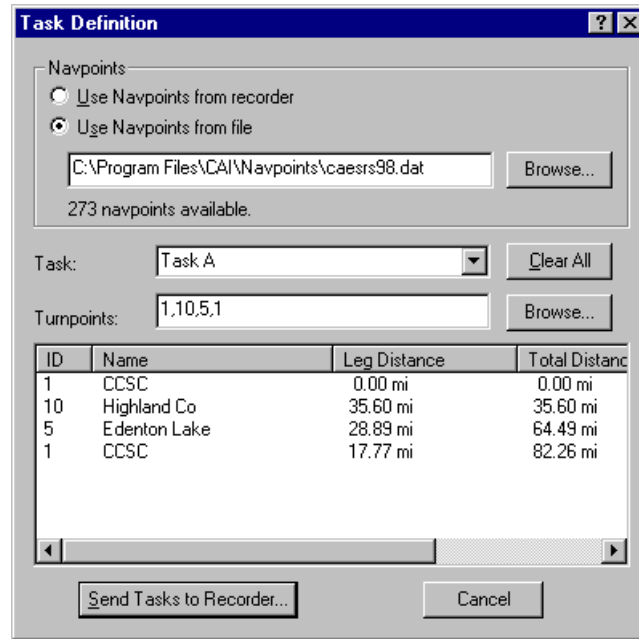
Downloading SUA files is very similar to downloading navpoint files. Special Use Airspace files should be downloaded from the Internet in the Tim Newport-Peace format. Follow the guidelines outlined for download Navpoint files download the SUA files.

Tasks

Defining a Task for the Data Recorder

The Cambridge Aero Explorer provides an easy to use interface to define tasks in your GPS-NAV recorder. To define tasks in the recorder, use the following these steps.

- From the **Task** menu, choose **Define and Transfer**. This command creates tasks and then transfers them to a connected data recorder.

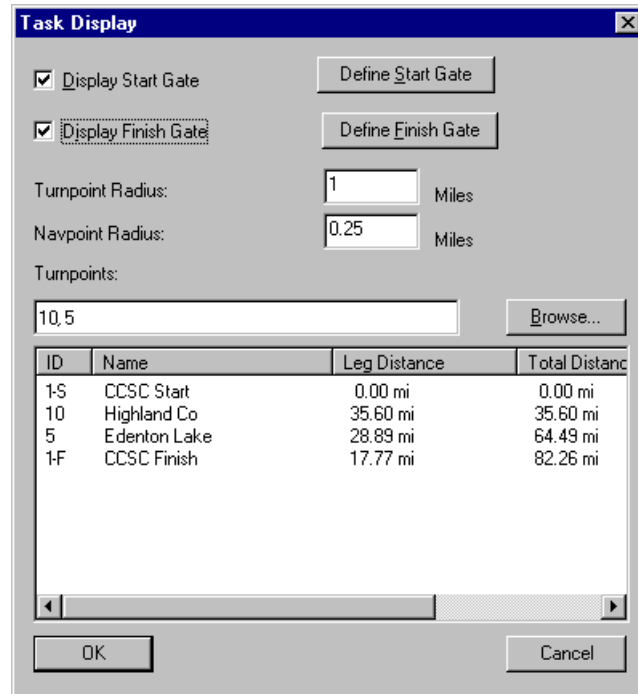


2. First select the navpoint list you wish to use for task creation. Select either the list loaded on the recorder, or choose a database already stored on your computer. For the **Use Navpoints from recorder** option to work, you must have a recorder connected to your PC which has valid navpoints stored in it.
3. In the **Turnpoints:** window type the numbers of the turnpoints you will be flying as they appear in the database list. For example, the 82.26-mile task shown above is specified as 1,10,5,1. To select from the list of available turnpoint numbers, click the **Browse** button next to the text window. Click on the turnpoint you wish to use.
4. As you enter turnpoint numbers in the **Turnpoints:** text box, the information for the current turnpoint appears in the lower window.
5. To define more than one task for the recorder, select a different task (lettered A through K) from the **Task** list, and then enter turnpoints for that task.
6. After tasks are defined, click **Send Tasks to Recorder**. The program sends the tasks to the recorder.

Overlaying a Task on a Flight Display

After displaying a flight, you may want to overlay a task on the display to see how well the flight conformed to the task. To overlay a task on a flight, follow these steps.

1. Display a navpoint file and optionally a flight log in the Display pane.
2. From the **Task** menu, choose **Define and Overlay**. You must either have a flight log or navpoint file displayed for this command to be available. Also, in order to overlay a task, you must have navpoints displayed. The Task Overlay dialog appears.



3. If you want start and finish gates, select **Display Start Gate** and **Display Finish Gate**. Then select the gate definition by clicking **Define Gate** for each. This puts the start and finish gates in the list. The ID of the start point in the list will have an “S” after it in the first column. Similarly, the finish point will have an “F” after the ID in the first column.
4. Enter a **Turnpoint Radius**. This radius is used to display a black circle around each turnpoint. Also displayed in this circle is the FAI turnpoint sector. See the FAI rules for a description of this turnpoint sector.
5. Enter a **Navpoint Radius**. This radius is used to display a smaller colored circle around each turnpoint.
6. Enter the **Turnpoints**. Enter the ID of the turnpoints, separated by either a comma or space. Click **Browse** to select a turnpoint from the list of navpoints. **Note:** Only those navpoints with the “Turnpoint” attribute specified will appear in the list.
7. Click **OK** and the program overlays the task on the display.

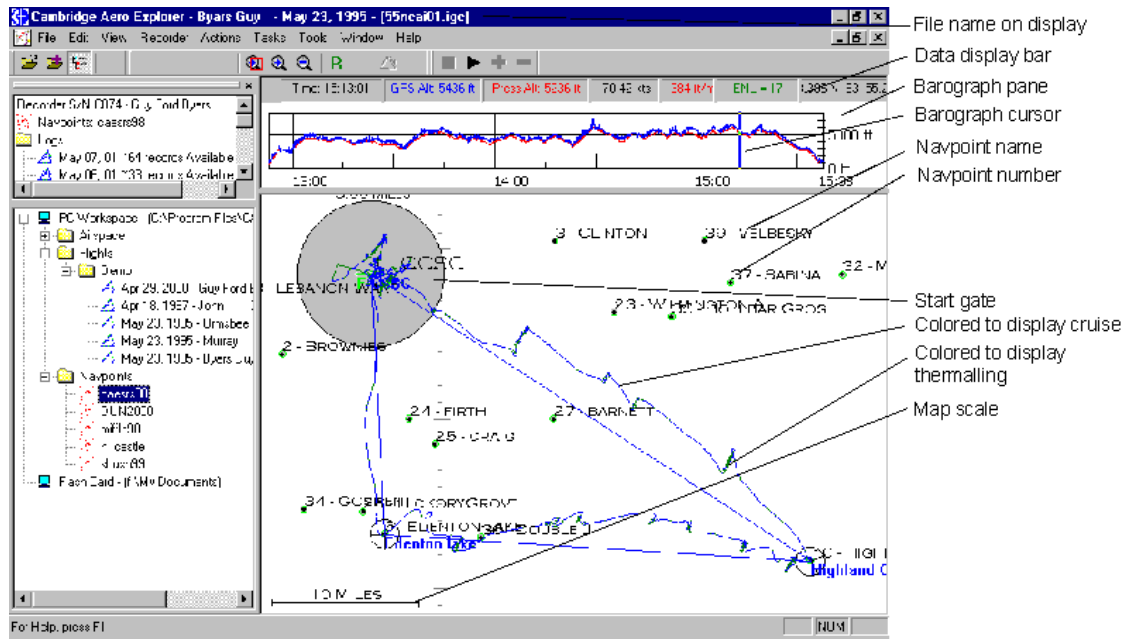
For more information refer to the tutorial section, **Defining and Displaying a Task**.

Note: The program remembers tasks you enter. If you want to overlay a task on another flight from the same day, you will not have to re-enter that task. This information is saved in the same folder as the flight log with the same first 3 letters as the log file name, but with a **.cfg** file type.

Note: When a task is overlaid on a flight display, that task is not sent to the recorder.

A Guided Tour

This section is a step-by-step description that covers simple operations within the program such as displaying flights and navpoint databases. This also covers 3D rotation of the flight view, analyzing the flight data, zooming the view in on detailed areas and overlaying tasks to the view.



Displaying a flight

In the lower left pane of the Cambridge-Aero Explorer, click on the + sign next to the folder named **Flights** and then click on the + sign next to the folder named **Demo**. Click and drag any flight icon in this folder to the right hand display pane. The top flight in the Demo folder was completed on April 29, 2000 at Caesar Creek Soaring Club. If you display this flight, you can see it includes the navigation points as well as the declared task recorded in the GPS for the day this pilot completed this flight. Note that as soon as the flight appears, the **Barograph pane** appears above the flight. The top bar of the **Barograph pane** displays time, GPS and pressure altitude, speed, climb or sink rate, engine noise level and the GPS fix respectively. The vertical blue line in the barograph trace represents the current GPS fix in the **Plot pane** below. Clicking and dragging this line anywhere in the barograph trace also moves the corresponding flight trace below.

In the upper-right hand corner of the display pane, click the **X** button to close this window (the lower of the two **X** buttons). Now click and drag the flight icon named **May 23rd by Al Ormsbee** in the Demo folder onto the display pane. Next click and drag the flight icon by **John Murray** onto the flight by Al Ormsbee. This overlays the Murray flight together with the Ormsbee flight. This displays the two flight traces together for comparison. Close this window by clicking the **X** button in the upper-right hand corner of the display pane.

You can perform operations using right-clicking as well. Right-click the Demo flight icon for **John Murray** and choose **Display**. The flight appears in the right hand pane. Right-click the flight icon for **Al Ormsbee** flight for the same day and choose **Display**. This time the flights appear in two separate windows. Choose **Tile** from the **Window** menu to see both flights.

Close both flight windows.

Displaying navpoints

- o Close the flight visible in the **Display pane**.
- o Click the + next to the folder in the **PC pane** labeled **Navpoints**.
- o Click and drag the **caersr98** navpoint icon to the display window.

The navpoints that make up the **caesrs98** file appear in the **Plot pane**. Click on the button with the magnifying glass and red square on the toolbar. Then click and drag in the Display pane to draw a window around a group of navpoints. When you release the mouse button, the view zooms in on these points.

Displaying airspace

Click the + next to the folder named **Airspace** to expand the list of airspaces. Then click and drag the airspace icon named **Caesar** into the display pane. This overlays the airspaces on the navpoints, allows you to view the special use airspaces along with navpoints and flight logs.

Hide the explorer bar

The left hand side of the screen, comprised of the Recorder pane and the PC pane, is collectively called the **Explorer bar**. Click the small **X** in the upper right corner of the Recorder pane to hide the Explorer bar. You now see the flight in a larger window. Alternatively, use the icon in the toolbar with a picture of a menu tree to toggle the Explorer bar on and off. You can also choose **Explorer bar** from the **View** menu to perform the same function.

Zoom

On the toolbar are three buttons to allow zooming the display pane in or out. Zooming changes the scale of the **Plot pane**. Click on the icon of a magnifying glass with a square attached, then click and drag to draw a rectangle around a section of the flight to magnify it. You can do the same thing by right-clicking the flight display, choosing **Zoom**, and then dragging a box around the area to be magnified.

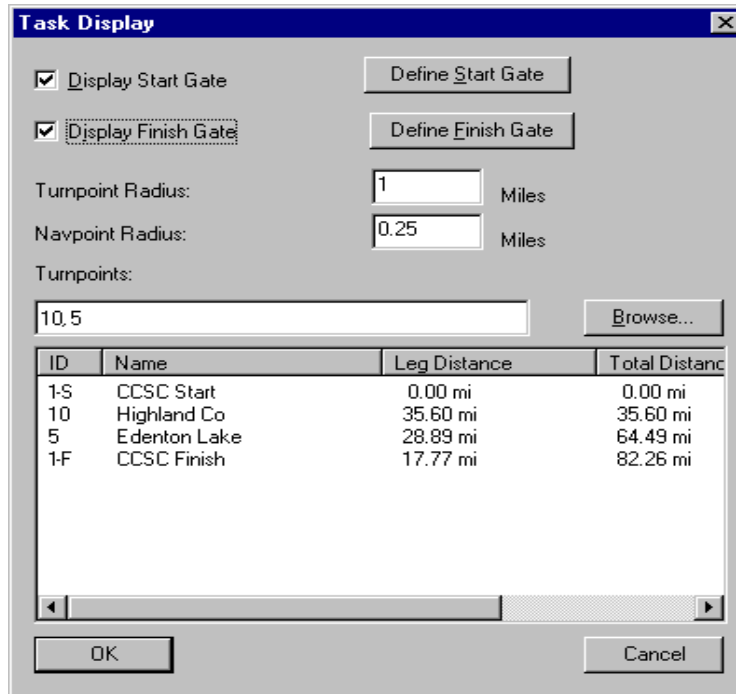
To simply zoom in the view without selecting a window, click on the magnifying glass with a plus sign button in the toolbar. To zoom out, click on the magnifying glass with a minus sign button in the toolbar. You can also right-click the display and choose **Zoom Out**. To re-center the view, click the **R** button in the toolbar, or right-click and choose **Reset**. All of the zoom commands are also duplicated in the **View** menu on the **Zoom** sub-menu.

Animate flight

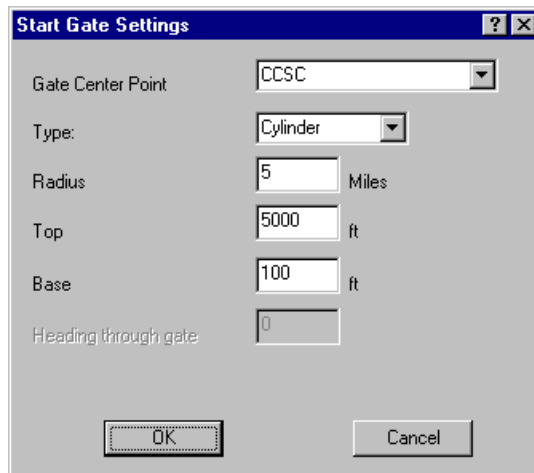
Now close the window. Double click on a flight in the PC pane to display it. You can now animate the trace of this flight. This makes the program draw the flight, as if you were watching the flight in progress. To animate the flight, click the right arrow button in the toolbar that looks like a VCR play button. This starts animating the flight. You can use the plus and minus buttons next to the **Play** button to either slow or speed up the animation sequence. The animation commands are also duplicated in the **View** on the **Animation** sub-menu. Choose the **Start** command to begin the animation sequence. **Stop**, **Slower** and **Faster** control the playback of the animation.

Defining and displaying a task

From the **Task** menu, choose **Define and Overlay**.



Selecting the **Display Start Gate** and **Display Finish Gate** checkboxes enables these features in the visual display of a task. Clicking **Define Start Gate** or **Define Finish Gate** allows you to select the start and finish gate parameters. Click **Define Start Gate**.



The default parameters for the Start Gate Settings are standard for most contests; however you can change as desired. Click **OK** to accept the start gate definition and return to the **Task Display** dialog box. Now click **Define Finish Gate**.

Finish Gate Settings

Gate Center Point: CCSC

Type: Line

Width: 2 Miles

Top: 1000 ft

Base: 100 ft

Heading through gate: 0

OK Cancel

In this instance, **Line** is selected for the **Type** of finish gate. The default setting is cylinder. Click **OK** to accept these parameters and return to the **Task Display** dialog box. Below **Turnpoints** is a text box where you can enter the turnpoint numbers for the task. To select turnpoints from a list, click **Browse** next to the text box to see a list of turnpoint possibilities for this flight.

ID	Name	Latitude
1	CCSC	39° 28.509 N
2	Brownies	39° 23.810 N
3	Clinton	39° 30.459 N
4	Dayton Gener	39° 35.010 N
5	Edenton lake	39° 13.199 N
6	Fayette Co.	39° 33.859 N
7	Green Co Apt	39° 41.629 N
8	Grimes field	40° 07.950 N
9	Hamilton Apt	39° 21.599 N
10	Highland Co	39° 11.610 N
11	Hook	39° 32.049 N
12	Jamestown La	39° 38.900 N
13	Lebanon Warr	39° 27.249 N
14	Madison Co A	39° 55.979 N
15	Moraine Airp	39° 40.809 N
16	Oxford-Miami	39° 30.229 N
17	Pickaway Co	39° 30.509 N
18	Piqua Airpor	40° 09.809 N
19	Randolph Co	40° 10.100 N
20	Richmond Mun	39° 45.509 N
21	Springfield	39° 50.879 N
22	Union Co Apt	40° 13.400 N
23	Wilmington A	39° 26.280 N

Click turnpoint number ten, Highland Co. The turnpoint list disappears and the number **10** appears in the text box under **Turnpoints**. If necessary, click **OK** and go back to the flight display to determine which navpoints were used as task turnpoints in this flight. From the **Tasks** menu, choose **Define and Overlay** and click **Browse** again to define the rest of the turnpoints in order. Note that if you define a start and/or finish gate, those points are already be in the list and you do not need to enter them again. Once you type in turnpoints **10** and **5** in the **Turnpoints** field, click **OK**. The program overlays the task on the flight. Circles appear over the turnpoints, the start gate is shaded red and the task is drawn on the screen. Zoom in on CCSC to see the finish gate drawn over the turnpoint.

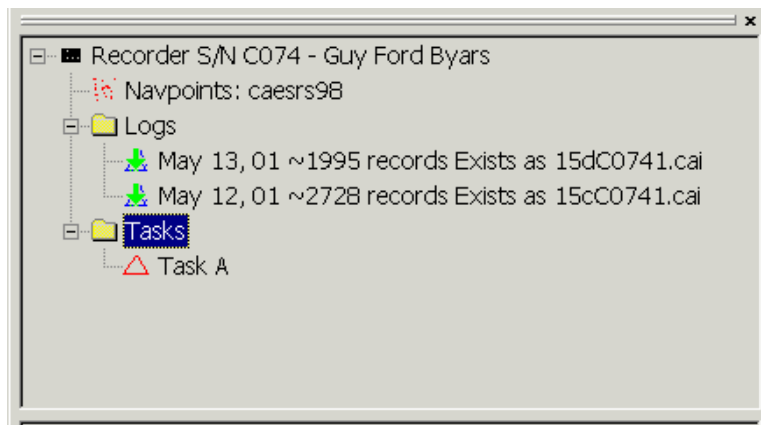
Chapter 3. Communication with Data Recorder

Connecting to recorder

Before you can access the information in your Cambridge logger, it must be connected to your computer. To connect your recorder to the Cambridge Aero Explorer, follow these steps:

1. Connect your recorder to your computer with a serial cable.
2. Make sure your recorder is turned on. Some recorders will need to have power supplied to it from either an A/C adapter or external battery. Consult with the manual supplied with your logger on how this is done.
3. Start the Cambridge Aero Explorer software. By default, the software will check each COM port available on the system and try to find a valid port with a recorder connected. Once a valid COM port is located, that port will become the default for future sessions.
4. If the Cambridge Aero Explorer is already running when you connected your recorder, you can make a connection by choosing **Connect** From the **Recorder** menu.

Once the connection is made, a few seconds later the recorder pane will be filled in with information from your recorder.

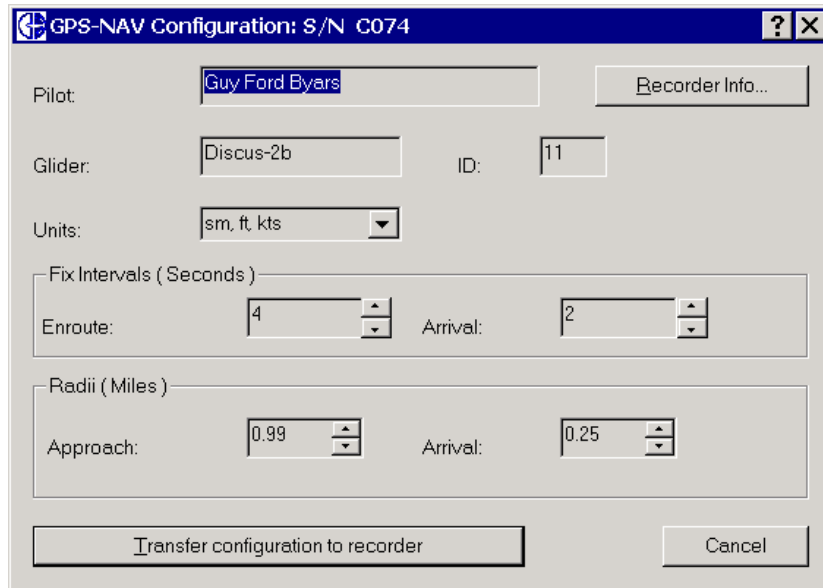


If you experience problems connecting to the recorder, check the troubleshooting section in the Appendix.

Note: If you are having trouble connecting, first close all other programs that might use the serial port. This especially includes programs that synchronize data between a pocket/PDA computer and your PC. **ActiveSync** and **HotSync** are two such programs that must be closed if connection problems occur.

Recorder Properties

From the **Recorder** menu, choose **Properties**. This screen contains essential GPS-NAV data. Change any data necessary then click **Transfer Configuration to Recorder**.



GPS-NAV Configuration: S/N C074

Pilot:

Glider: ID:

Units:

Fix Intervals (Seconds)

Enroute: Arrival:

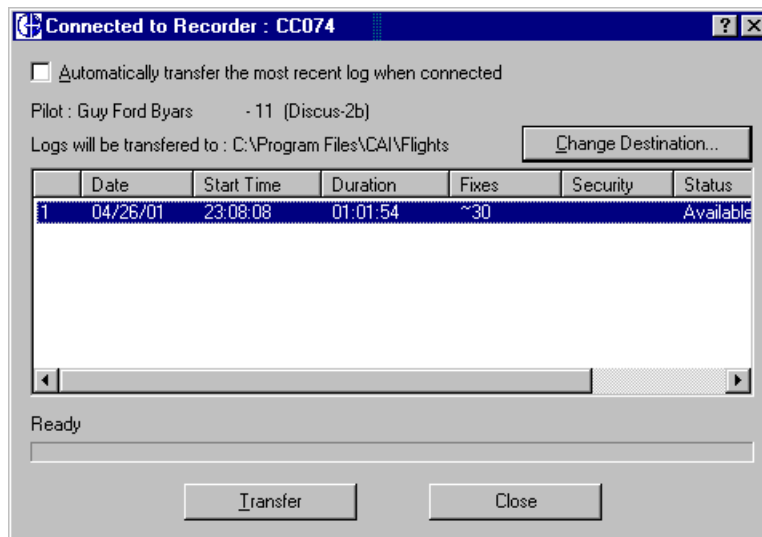
Radii (Miles)

Approach: Arrival:

CAUTION! When the configuration is changed, any logs already stored in the recorder are destroyed.

Log Manager

From the **Recorder** menu, choose **Log Manager**. This dialog displays the flight log contents of your data recorder. By far the easiest and most convenient way to access your flight logs is with the Recorder pane. However, the Log Manager can also be used. By default, the log manager downloads your files to your default flight log folder. This directory is displayed in the log manager dialog. You may change this destination to any other folder or drive on your computer by clicking **Change Destination**.



Connected to Recorder: CC074

Automatically transfer the most recent log when connected

Pilot: Guy Ford Byars - 11 (Discus-2b)

Logs will be transferred to: C:\Program Files\CAI\Flights

	Date	Start Time	Duration	Fixes	Security	Status
1	04/26/01	23:08:08	01:01:54	~30		Available

Ready

Hint: The Log Manager can be very useful for soaring contests where viewing flights from many different recorders in a short time is desirable. Selecting (checking) **Automatically transfer the most recent log when connected** makes Cambridge Aero Explorer to monitor the serial port. Whenever a recorder is connected, the program automatically transfers the most recent flight.

Transferring data to the recorder prior to taking off

When flying at a new location, you may want to load a new navpoint database for that location into your recorder. To transfer a new set of navpoints to your recorder, follow these steps.

1. Connect your recorder to the computer with a serial cable. Make sure your recorder is turned on.
2. Make sure your navpoint database file is visible in the PC pane. See the section on “Managing files within the Recorder and PC panes”. Often navpoint databases are distributed on a floppy disk. If your navpoint file is on a floppy, you can import it to your PC pane by using the **Import Files...** command when you right click on a folder or workspace in the PC pane.
3. Locate the navpoint database file you want to transfer. You can transfer the file by clicking and dragging the navpoint file from the PC pane to the recorder icon in the Recorder pane. Alternatively, you can right-click the navpoint file icon in the PC pane and choose **Send To, Recorder...**
4. Before the transfer occurs, the program displays a confirmation dialog listing how many navpoints will be transferred to the recorder. Note that many GPS-NAV models can only hold a maximum of 250 navpoints.

Note: When the program transfers navpoints to the recorder, the program reads them back from the recorder and compares them with the original points. This verification process ensures that your navpoints were transferred correctly. Upon successful transfer to the recorder, the program displays a confirmation dialog confirming the number of points transferred. **Important:** If you do not see the confirmation dialog, this indicates that the transfer was not successful.

To transfer tasks to your recorder, see the section “Defining a Task for the Data Recorder”.

Transferring flight logs from the recorder after landing

Once the flight is complete, you should have newly created flight logs in your recorder. To transfer a flight log to your computer and display it, follow these steps:

1. Connect your recorder to your computer with a serial cable. Make sure the recorder is turned on.
2. From the **Recorder** menu, choose **Connect**. The program displays the contents of your data recorder in the Recorder pane.
3. Double-click the desired flight log icon in the Recorder pane. This starts the transfer and displays the progress of the transfer.
Alternatively, you could click and drag the flight log icon to the Display pane. This automatically transfers the flight log to the default flight log file directory.
Or you can open the recorder **Log Manager**, select the desired flight and select **Transfer**.

Using Flashcards

Flashcards are small storage cards readable by computer devices such as a Pocket-Nav. In order to access the contents of a flashcard, a suitable reader or card adapter should be installed on your computer. A variety of flashcard readers are available through third party vendors. These normally connect through the PCMCIA slot, USB or parallel ports and once installed, allow the flashcard to be accessed as a removable drive on your system.

Cambridge Aero Explorer searches your system for a flashcard no matter what connection method you use, laptop or desktop machine. If a flashcard is available on your system as and you have a **My Documents** folder as a top-level directory on the flashcard,

then that folder will automatically be visible as a workspace in the PC pane. Similarly, if your flashcard contains a folder named **Flights** this will also be visible as a workspace in the PC pane.

Transferring data to the recorder via a flashcard.

Navpoint, SUA and flight log files can be transferred to a Cambridge recorder that is permanently mounted in the glider using a flashcard. To transfer navpoints and SUA files to a recorder using a flashcard, follow these steps.

1. Make sure a flashcard reader is properly installed in your computer and a flashcard is inserted in the reader. The flashcard must appear as a removable drive when you double-click the “My Computer” desktop icon. This flashcard also must have a folder called **My Documents** on it. If this folder is not there, right-click in the flashcard window, point to **New**, then click **Folder**. Name the folder **My Documents**.
2. Start the Cambridge Aero Explorer. If all the requirements in the previous step are met, then you should see a workspace called **Flash Card** as the last entry in the PC pane.
3. Find the navpoint file in the PC pane you wish to transfer to the flash card (and eventually to the recorder). Right-click the navpoint file, point to **Send To**, then choose **Flash Card**. The program transfers the navpoint file to the flashcard.
4. Repeat the procedure, selecting an SUA file if you wish to transfer a SUA file to the flashcard.
5. Remove the flashcard from the PC and insert it into your Pocket-Nav computer. Follow the instructions that came with the Pocket-Nav on how to transfer data from a flashcard to the recorder.

Transferring flights from the recorder via a flashcard.

If your recorder is permanently installed in the glider, you can transfer flight logs from the recorder to the PC using a flashcard. To perform this transfer, follow these steps.

1. Follow the instructions with the Pocket-Nav to transfer the flight from the recorder to the Pocket-Nav flashcard. This transfer doesn’t automatically happen during the flight, you must transfer it at the end of the flight.
2. Remove the flashcard from the Pocket-Nav and insert it in the flashcard adapter in the PC.
3. Make sure a flashcard reader is properly installed in your computer and insert the flashcard in the reader. The flash card must appear as a removable drive when you double-click the “My Computer” desktop icon. When the Cambridge Aero Explorer starts, the flashcard should appear in the PC pane as a workspace called **Flash Card (X:/Flights)** where “X” is the drive letter the system assigns to your flash card..
4. Expand the workspace under **Flash Card**, and you should see your flight logs. Double click on a flight log to display it.

To copy the flight from the flashcard and save it on the computer, follow these steps.

1. Right-click the flight log under the **Flash Card** workspace, and choose **Copy**.
2. Right-click a folder icon under one of the workspaces on your hard drive, then choose **Paste**.

Chapter 4. Flight Display

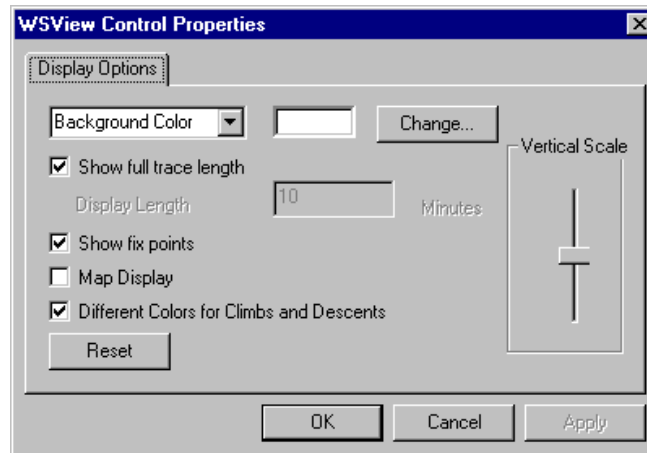
Introduction

Your Cambridge GPS-NAV or similar product records data as you fly and saves a series of GPS location fixes in a flight log. Cambridge Aero Explorer allows you to view these flights on your computer. Some features available when displaying your flights are:

- You can use the mouse, mouse wheel or keyboard to control the display of your flight trace.
- You can overlay additional flights, navpoints or airspaces by clicking and dragging them onto a current flight, navpoint, or airspace display.
- You can play back your flight to watch how you flew around the course.
- You can change the display options such as the colors of the screen background, flight path, and task.
- You can “lock” the display on a pilot and have the screen automatically scroll to keep him in view. This gives a “Moving Map” effect and is especially useful for long flights along a mountain ridge.
- You can display files with several different formats. Once displayed, the same display controls are used to control the display regardless of the origin. The following file formats are supported: flight logs stored in the International Gliding Council's format. (.IGC format); flight logs stored in Cambridge's proprietary flight log format (CAI format); Cambridge Aero Navpoint files or (.DAT files); and Special Use Airspace files in the “Tim Newport-Peace's Special Use Airspace Format”.

Display Options

You have control over the appearance of the display. From the **Tools** menu, choose **Display Options**. You can also right-click inside a plot and choose **Properties**.



From this dialog you can change the following:

- **Colors** - To change the color of part of the display, select the part you wish to change, and then click **Change** to select a new color. The current color for the selected part appears to the right of the part name.
- **Show full trace length** - Often the display can become quite cluttered from trace points recorded very early in the flight, which can hinder viewing and analysis of later segments. To address this problem, clear this checkbox to display only the most recent segment of the flight. You can then enter the **Display Length** (in minutes).

For example, if you enter 5, then only the most recent 5 minutes of the trace is displayed.

- **Show fix points** - Display individual GPS fixes as small circles in the flight trace when selected. These circles are often not visible unless you zoom in on a small area of the flight.
- **Different colors for climbs and descents** - Use different colors on the flight for descent and ascent when selected
- **Reset** - Reset the **Plot pane** scale to the default setting. Useful after you have zoomed in or out on a display.

Display Control

When viewing a flight in the Display pane, you can use the mouse, mouse wheel or keyboard to control your display. The following tables outline how you control the display.

Keyboard Controls

Right Arrow Key	Advance the trace display one GPS fix point.
Left Arrow Key	Move the trace display back 10 seconds.
End	Display the entire flight by advancing the trace display to the end of the flight
Home	Move the trace display back to the beginning of the flight
Page Up	Advance the trace display two minutes.
Page Down	Move the trace display back two minutes.

Mouse Controls

Click and drag in the Barograph pane	Change the trace display to end at the time indicated by the barograph cursor.
Move mouse pointer over the current fix	When the mouse is moved over the end of the trace, a box appears with the pilot name and altitude.
Click on current the fix	When you click on the current trace, a box with the pilot's name and altitude is displayed. When the lock is on, the screen will automatically scroll to keep this pilot visible. This feature is especially useful during animation playback. To clear this lock, click in an empty area of the screen.
Move mouse pointer over the trace	Trace points are highlighted by a small black circle that follows the flight path. Information about that data point is displayed at the top of the barograph pane.
Double-click on trace point	If you double-click on a trace point, that point becomes the current display point.
Click and drag over display	Changes the cursor to a hand icon, mouse movements cause the display to shift or pan.
Ctrl+click on display	Zooms in on the display under the mouse pointer.
Ctrl+right-click on display	Zooms out.
Right-click on display	Display context-sensitive menu.
Rotate mouse wheel (if available)	Change the trace display two minutes per wheel movement.

Zoom

Changing the scale of the displayed flight is “zooming in” (more detail, less area) and “zooming out” (less detail, more area).

The zoom in (magnifying glass with + button) and zoom out in (magnifying glass with - button) commands simply increase and decrease the viewing scale of the displayed flight. However, the most powerful way to zoom in on a flight is to zoom by drawing a small window around the area of interest. To use this feature, follow these steps.

1. Do one of the following:
 - o Click on the button with a magnifying glass with a square.
 - o From the **View** menu, point to **Zoom**, then click **Draw Zoom Window**.
 - o Right-click on the plot pane and select “Zoom” from the menu.
2. The mouse cursor changes to a small cross. Move this to the upper left hand area of interest in the plot pane.
3. Click and drag to draw a rectangle around the area of interest.
4. Release the mouse button and the program resizes the display to zoom window you just drew.

To re-center the view and reset the scale of the plot pane, click on the **R** icon in the toolbar or right click and select **Reset** from the menu. All of the zoom commands are duplicated in the **View** menu. Click **View**, then touch **Zoom** then select the appropriate zoom function.

Making the Display Follow a Flight

Occasionally you will want to view in detail a flight that spans a long distance. Since it would be inconvenient to continuously stop the flight playback and move the screen, you can “lock” the view on a pilot and program automatically scrolls the screen to keep the pilot in view. To use this feature, follow these steps.

1. Move the current display of the flight trace to the beginning of the task. Adjust the zoom to provide a comfortable view of the pilot and the terrain.
2. Move the mouse over the end of the flight trace until the small box appears displaying the pilot's name and altitude. Then click on the end of the flight. The display is now “locked” onto that pilot.
3. Start the animation playback. From the **View** menu, point to **Animation**, and then click **Start**. You can also click the triangular “play” button from the toolbar. When the program plays back the flight, it automatically scrolls the display to keep this pilot visible. To clear this lock, click the mouse in an empty area of the screen.

Displaying Multiple Flights

It is very popular to compare flights made by two different pilots on the same day, or even different days, together on the screen at the same time. This is easily done with the following steps.

1. Find the first flight to display in the PC pane and display it by doing one of the following:
 - o Double-click the flight icon.
 - o Right-click the flight icon and choose **Display**.
 - o Click and drag the flight icon to the Display pane.
2. Find the next flight to in the PC pane you want to display. Click and drag that flight onto the Plot pane displaying the first flight.
3. To add additional flights to the display, repeat step 2.

If you try to display two flights flown on different days, the program displays a message advising you of this. After you click **OK**, the program displays the flights.

Chapter 5. Appendix

The Appendix contains additional reference material that you may find helpful. It includes a listing of menu commands, right-click menu commands, troubleshooting information, and a description of selected file formats.

Menu Commands

The menu bar in the Cambridge Aero Explorer contains all the commands that you use to accomplish tasks in the program. Many of the commands, such as those on the **Action** menu, apply to the currently selected item (file or folder) in the Recorder or PC pane. Others apply to the Display pane or the Recorder.

File Menu

New - Create a new **Workspace** or **Folder**.

Open - Prompts with a browser window to search for a file to open. Flight logs, navpoint files and SUA files can be opened with this command.

Close - Closes the active file in the **plot pane**.

Below **Close**, displays the last four files viewed in the program.

Exit - Close Cambridge Aero Explorer.

Edit Menu

Cut - Copy the selected file to the Windows clipboard and removes it from the PC pane.

Copy - Copy the selected file to the Windows clipboard.

Paste - Paste the last file in the Windows clipboard to the selected workspace or folder.

Delete - Remove the selected file to the recycle bin.

Rename - Change the selected file name.

View Menu

Toolbar - Toggle the toolbar on and off.

Status Bar - Toggle the bottom status bar of the program on and off.

Explorer Bar - Toggle the combined view of the **PC pane** and **Recorder pane** on and off.

Zoom - Incrementally zooms the **plot pane** in or out, or **zoom window** allows the user to draw a box in the **plot pane** to define the area to zoom in on.

Animation - Start the flight log playback in the **plot pane** once **start** selected. Once **start** is selected then **stop**, **slower** and **faster** become active.

Reset View - Reset the view of the **plot pane** to the default size, top down view.

Next Task Point - Progressively display each point in a defined task in the plot pane. Each time this menu is selected, the next point in the task will be displayed.

The Recorder Menu

Connect - Attempt to connect the Cambridge Aero Explorer to a data recorder on the serial port.

Properties - Communicate with the recorder and display a screen with essential glider and GPS-Nav data.

Log Manager - Display a window that facilitates transferring flight logs to Cambridge Aero Explorer.

Actions menu

Display - Graphically display the selected file in the **Plot pane**.

Overlay - Display the selected file with the contents of the **Plot pane**.

Edit - Edit the selected file contents.

Transfer to PC - Move the selected log or navpoints from the recorder to the **PC**.

Transfer to Recorder - Move a selected file to the data recorder.

Verify Flight Log Security - Check the digital signature of an .IGC file to verify the log is secure.

Tasks menu

Define and Transfer - Define a task in the **Task Definition window** and then transfer the task to a connected data recorder.

Define and Overlay - Define a task in the **Task Display window** and then display the task graphically in the **Plot pane**.

Tools menu

Covert Log to IGC format - Change the selected .CAI file to an .IGC format file.

Options - Display a window with four panes:

- The **General** tab sets the communications port for connection to a data recorder, and contains check boxes to tell Cambridge Aero Explorer to connect to a recorder and check for a flash card on startup. Display units can be selected from a drop down.
- **Navpoint Display** contains four settings to define how Cambridge Aero Explorer displays navpoint lists with a flight log.
- **Time Conversion** defines how time is converted from GMT time to local time for a flight log.
- **File locations** set the default pathways for workspace folders in the **PC pane**.
- **Display Options** calls up a window with various display settings. See the flight display section for a full description of each option.

Window menu

Cascade - Shrink the **Display pane** windows and stack them so that the title bar of each is visible.

Tile - Arrange each open window so they are all displayed in the **Display pane**.

Close all - Close all open windows in the **Display pane**.

Displayed files are listed below the previous three commands with a check mark to the left of the file that is the current display.

Help menu

Help topics - Display the online help for the program.

Web Support - Start your web browser and open the support page on the Cambridge web site if an Internet connection is available.

About Cambridge Aero Explorer - Display the build date and version of your software. Have this information ready if you need to contact Cambridge for support.

Right-Click Menu Commands

When you right-click an icon or folder in the PC or Recorder pane, the program displays a menu of commands. The menu is context-sensitive, which means the commands on the menu apply specifically to the right-clicked icon. This gives you a quick and easy way to accomplish many tasks simply by right-clicking an icon and choosing the command to apply to the icon.

Recorder icon

Connect... - When the program is not connected to the recorder, this is the only context menu available. Selecting this menu will cause the program to attempt to connect to the recorder via the serial port. When a recorder is detected, the Recorder pane will be updated.

Refresh - Sometimes the Recorder pane does not reflect what is actually in the recorder that is connected to the computer. This can happen when a recorder is disconnected from the computer and a different one is connected. This command will cause the program to connect to the recorder and update the Recorder pane with information from the connected recorder.

Properties... - This menu will allow you to view and update the configuration of your recorder. This includes pilot name, competition number, units... etc.

Tasks and Task Folders in the Recorder pane

Properties... - This menu will access the task and navpoint information in the recorder and display them together. This is very useful in that it gives you an accurate view of the task and the navpoints that define it.

Navpoint and flight logs icons in the Recorder pane

Transfer to PC... - When a log is selected in the Recorder pane, this menu will cause the log to be transferred to the PC. The log file will be transferred to the default log file location on the PC. A log file will be created on the PC in both IGC format and in IGC format. Both files contain identical information. Similarly, if the navpoints are selected in the recorder pane, this menu

Workspace icons

New Workspace... - This menu will prompt you to browse the contents of your computer to select which folder, disk or flashcard you would like displayed in the PC pane. This action can be used to call up an old archive of stored flights..

Change Workspace... - This menu will change which folder, disk or flashcard the workspace represents.

Paste - This command will copy the file from the Windows clipboard to the selected workspace. This menu is only active after a flight log, SUA file or navpoint file has been either cut or copied to the windows clipboard. This cut or copy operation could have been done either from the PC pane in the Cambridge Aero Explorer, or anywhere in the Windows file explorer.

Rename - This menu will let you to edit the name of the workspace.

Delete - This menu will let you remove the workspace from the PC pane. Note that this process will destroy none of your files. It simply removes the workspace from the PC pane. The top most workspace may be renamed, but cannot be deleted.

Open... - This menu will open the folder that the workspace references. This will let you see all the files in this folder, not just the ones the Cambridge Aero Explorer can recognize. This is useful to help you troubleshoot the problem of having an Airspace or navpoint file in the folder that is not showing up in the PC pane.

Import File... - This menu will prompt you to browse the contents of your computer to select a log, SUA or navpoint file to copy into your workspace. This is especially useful if you have a file on a floppy disk you want to bring into your workspace.

Folder icons in the PC pane

Paste - Similar to Workspace Paste, see above.

New Folder... - Similar to Workspace New Folder, see above

Import File... - Similar to Workspace Import File, see above

Set As Default > Flight Log Folder - When logs are transferred from the recorder to the PC, by default they are transferred to the default flight log folder. You can easily change this default with this menu command. Simply click on the folder and select this menu.

Set As Default > Navpoint Folder - When navpoints are transferred from the recorder to the PC, by default they are transferred to the default navpoint log. This folder also acts as the default folder whenever you are prompted by the program to select a navpoint file. You can easily change this default with this menu command. Simply click on the folder and select this menu

Rename - Similar to Workspace Rename, see above

Delete - This command will remove the folder from the workspace and from your hard drive. The folder must be empty to be deleted.

Open... - Similar to Workspace Explore, see above

SUA & Navpoint icons in the PC pane

Send To > Floppy Disk - This command will copy the selected file to the floppy drive of your computer designated as the A: drive. This is very convenient at contests when you might want to make a copy of some of your navpoints and give them to a friend.

Send To > Flash Card - This command will copy the selected file to the compact flashcard inserted in your computer. You must have a flashcard inserted in your computer for this command to be available. Also, for the program to recognize your flash card, it must have a folder called "My Documents" on it. This is very convenient when you want to transfer some navpoints and SUA files to your Pocket-Nav system via the flashcard.

Cut - This command will copy the selected file from the workspace to the Windows system clipboard. When the file is pasted elsewhere, it will be removed from its original location. Note that you can cut from the PC pane and paste to another folder or workspace in the PC pane, or you can even paste to a folder in the Windows file explorer.

Copy - This command will copy the selected file from the workspace to the Windows system clipboard. When the file is pasted elsewhere, the file is copied to the target location. Note that you can copy from the PC pane and paste to another folder or workspace in the PC pane, or you can even paste to a folder in the Windows file explorer.

Display - This will display the SUA or navpoint file in the Plot pane.

Overlay - This will overlay the SUA or navpoint file with what is already visible in the Plot pane.

Edit... - For SUA files, this will open the file in Microsoft Notepad. With Notepad you can view the contents of the file and make simple changes. For navpoint files, this command will open the file with the navpoint management utility.

Delete - This will remove the file from your computer and send it to the Recycling Bin.

Rename - Similar to Workspace Rename, see above

Flight log icons in the PC pane

Send to Floppy (A:) - Similar to SUA and Navpoint Send to Floppy, see above

Cut - Similar to SUA and Navpoint Cut, see above

Copy - Similar to SUA and Navpoint Copy, see above

Display - Similar to SUA and Navpoint Display, see above

Overlay - Similar to SUA and Navpoint Overlay, see above

Edit... - This will open the selected IGC file with the Notepad editor. You can then view the information in the IGC file and make simple edits if needed. As logs in the CAI format are in a Cambridge proprietary binary format, they cannot be edited.

Delete - Similar to SUA and Navpoint Delete, see above

View Navpoints in Log... - This will read any navpoints in the flight log and display them with the standard navpoint edit function. **Note**, any changes made to your navpoints will not be saved in the flight log. You may, however use the "Save As..." button in the navpoint edit dialog to save your navpoints in a separate file.

Validate Security - This will check the security signature for flight logs in the Cambridge CAI format.

Troubleshooting

Program Installation

The installation procedure for the Cambridge Aero Explorer has been carefully tested on each Windows operating system. However, it is still possible for problems to occur during installation. If you get errors during the installation, check the following:

- ?? Make sure you are installing on a Windows 95, 98, ME, NT or 2000 system. Other systems are not supported.
- ?? Check enough disk space is available for the installation. 4MB is required for the basic installation.
- ?? Close all other programs. This includes programs started automatically when the computer is turned on. They can be identified by a small icon immediately to the left of the system clock in the lower right portion of the screen. You can typically close these by right clicking on them and selecting "Close" or "Exit".
- ?? Make sure any virus checking software is turned off.

Can't connect to recorder

Sometimes some systems have trouble communicating with the Cambridge recorder. Should you have this problem, follow these steps:

1. Close all other programs that might use the serial port. This especially includes programs that synchronize data between a pocket/PDA computer and your PC.

ActiveSync and **HotSync** are two such programs that must be closed if connection problems occur.

2. Make sure your recorder has power and is turned on.
3. Make sure your com ports are enabled. Some laptops have both an infrared port and a serial port, only one of which can be used at a time. Make sure the serial port is enabled.
4. Try different COM ports. To change the COM port in the Cambridge Aero Explorer, choose **Options** from the **Tools** menu, then select the **General** tab. Select COM port 1 from the dropdown list, then press the “**Test Com Port**” button. Try different COM port numbers until you find one that works. Make sure the recorder is turned on and plugged into the serial port when you try this.
5. Check with the Windows documentation to see how to get information on available COM ports on your system. Make sure one is available.

File Format

IGC – File Format

The format for the IGC flight log files can be found at the FAI website at:

<http://www.fai.org>

As of this writing the IGC file document can be accessed directly at:

http://www.fai.org/gliding/gnss/tech_spec_gnss.html

Special Use Airspace File Format

The format of the SUA is commonly known as the “Tim Newport-Peace's Special Use Airspace Format”. This format is included below for reference.

```
#####
##### USER DEFINED FILE #####
#####
#
# This is an (almost) empty file in which you can define your own
# Display Data.
#
# All lines beginning # are considered comments and will be ignored.
#
# Each line consists of a Keyword and a value. These Keywords are
# defined
# as follows:
#
# TITLE= Sections and Sub-Sections Always commence with a line
# beginning
# TITLE=.
#
# INCLUDE= When a line beginning INCLUDE=NO is encountered skip all
# text until a line beginning INCLUDE=YES is encountered.
# This will normally be on the line BEFORE a TITLE= line.
# YES and NO are the only permitted Values.
#
# TYPE= This defines the Type of Airspace. The permitted values
# are:
# Definition Abbreviation
# CTA/CTR C
# AIRWAYS A
# RESTRICTED R
```

Cambridge Aero Explorer User's Guide

```
#          PROHIBITED          P
#          DANGER              D
#          OTHER                O
#          TRAINING ZONE       Z
#          TRAFFIC INFO        I
#
#          The latter two are not currently in use, but may be used at
#          some future date.
#
# POINT= This is always followed by a Lat/Long position, for example
#          POINT=N524033 W0014380. It is important that the
#          construction is followed exactly. If this is the first
#          POINT= line AFTER a TITLE=, drawing will commence from
#          this point, otherwise a line will be drawn from the
#          previous point to this new point. The last
#          POINT will normally be the same as the first POINT.
#
# CLOCKWISE or ANTI-CLOCKWISE
#          This is always followed by a RADIUS keyword, a CENTRE
#          Keyword and a TO Keyword (The only valid place for
#          RADIUS, CENTRE and TO keywords is when describing an Arc
#          or Circle.), and describes an arc to be drawn Clockwise
#          or Anti-Clockwise from the current
#          position, and should be constructed as follows:
#          ANTI-CLOCKWISE RADIUS=8 CENTRE=N522734 W0014494 TO=N521948 W0014754
#          or  CLOCKWISE RADIUS=8 CENTRE=N522734 W0014494 TO=N521948 W0014754
#          The units of Radius are Nautical Miles.
#
# CIRCLE= Similar to Arc but with only RADIUS and CENTRE Secondary
#          keywords.
#          e.g. CIRCLE RADIUS=10 CENTRE=N555700 W0032227
# WIDTH= This Keyword describes the width of an Airway in Nautical
#          Miles and is only used in conjunction with an AWY keyword.
#          If no WIDTH= statement is given then 10NM will be assumed.
# AWY= This is like the POINT= keyword and describes a point on
#          the centre-line of an Airway whose width has been
#          previously given in a WIDTH= statement
#          e.g. WIDTH=10
#          AWY=N555223 W0042667
# TOPS=
# BASE= Each section of airspace requires a BASE= and TOPS=
#          statement in order that Air_Check can detect infringements.
#          The BASE can be defined as a Flight Level or ALT. TOPS
#          will normally be a Flight Level. For example:
#          WIDTH=10
#          BASE=2500ALT
#          TOPS=FL245
#          or
#          WIDTH=10
#          BASE=FL55
#          TOPS=FL245
#
# The file must finish with the word END
#
# Further Examples of the use of WIDTH= and AWY= can be found in the
# file AIRWAYS.AIR, and other Keywords in CLASS_A.AIR and CLASS_D.AIR.
#
```

```
# You can use this file to draw any shape you wish, for instance you
# could draw your Base Airfield's ATZ or Runway. The following sample
# data draws the Main Runway at Lasham.
#
# NOTE: POINTs etc. are in the format (d)ddmmss [degrees, minutes,
# seconds and not (d)ddmm.mm [decimal minutes] as in previous
# issues.
#
INCLUDE=YES
TYPE=TRAINING ZONE
#
TITLE=Lasham Runway 09/27
#
POINT=N511112 W0010238
POINT=N511114 W0010238
POINT=N511119 W0010109
POINT=N511117 W0010109
POINT=N511112 W0010238
#
#
# End of File. Have Fun!
#
END
```

