

Identification: A14 - N900  
Tech. Bulletin n°: **PDX2005-02**  
Date: 26-05-2005  
Issuer: M. Scalon (TT&S)  
Factory: PD-Vallenoncello Modular Cooking



**Subject** N900 PASTA COOKERS: NEW WATER SOLENOID VALVE

**Model** 200372, 200373, 200374, 200375, 200376, 200377, 200378, 200379, 200380, 200381, 200382, 200383, 200396, 200397, 200398, 200399, 200400, 210376, 210377, 210378, 210379, 210380, 210381, 210382, 210383, 220376, 220377, 220378, 220379, 220380, 220381, 220382, 220383, 224009

**Problem** The solenoid breaks in case of:  
- lack of water in the main water supply net;  
- hot water supplied to the pasta cooker.

**Reason** - The solenoid is designed for intermittent duty.

**Actions in factory** - New components from s/n 521...  
- Updated the spare part lists.  
- New components to install:  
1. Water solenoid valve (new code: **0C2390**);  
2. n°2 hose carriers (code: **0C1626**) for inner water connections;

**Actions in field** The new components are available as spare part.

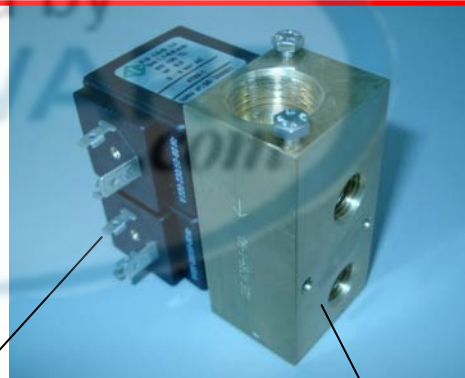
*The present modification can be retrofitted but it is not mandatory*

For the spare part code of each component see also the Spare Parts Catalogue.

**OLD WATER SOLENOID VALVE**



**NEW WATER SOLENOID VALVE**

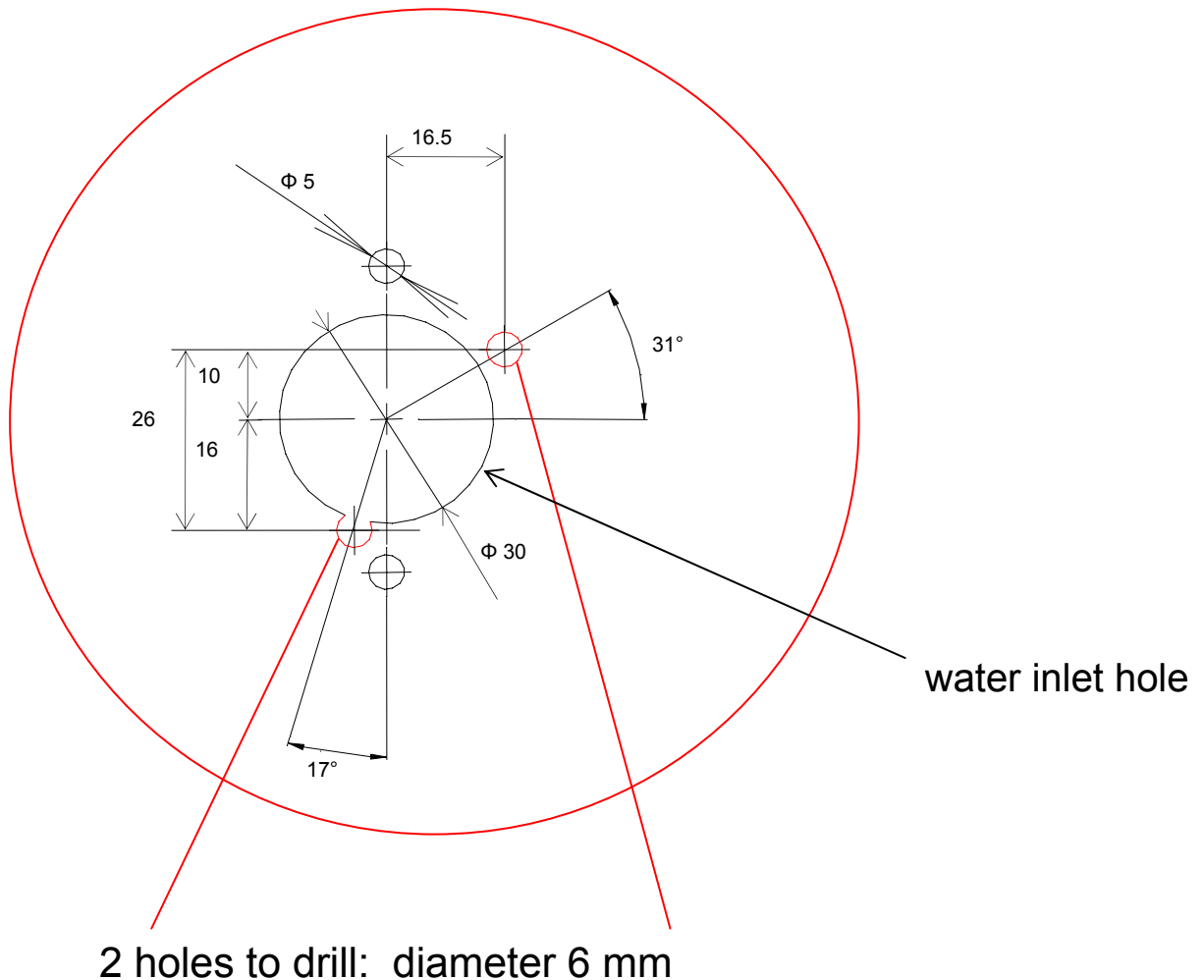


Solenoid 'class F'  
Room temperature 80 °C

Body in brass

To replace the new water solenoid valve on equipments older than s/n 521... it is needed to run also the following modifications:

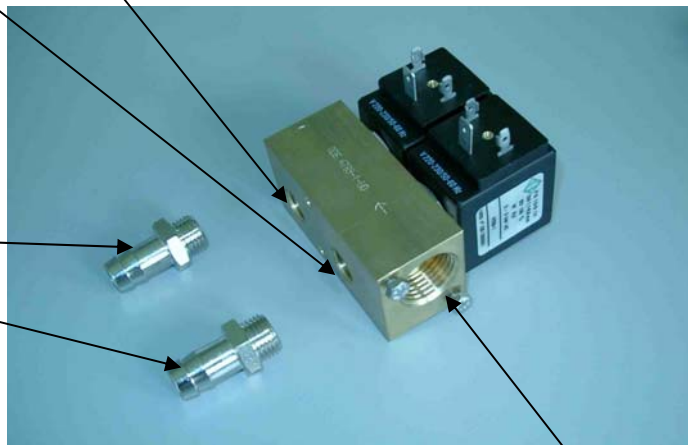
- ✓ **Bottom:** it is needed to drill 2 holes (diam. 6 mm) for fitting the valve round the main water inlet hole (see picture below);



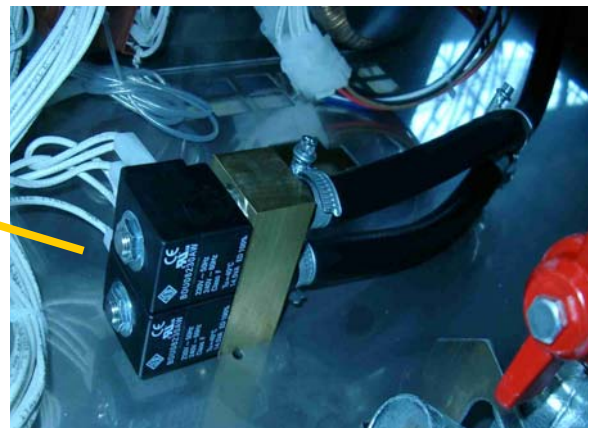
- ✓ **Inlet water connection:** new connection: 1/2 inch female thread; old connection: 3/4 inch male thread. (*It is needed a nipple connector to reconnect the equipment to the water pipe: not available as spare part*).
- ✓ **Outlet water connections:** it is needed to use 2 hose carriers to connect the valve to the hoses.

water outlets: 1/4 " female thread

hose  
carriers



water inlet: 1/2 " female thread



Example of installation of the new valve

- ✓ **Electric connections:** electric connections don't change (see picture below).

