



# Cordless Telephone

SP-R5210

# **SERVICE** *Manual*

## Cordless Telephone

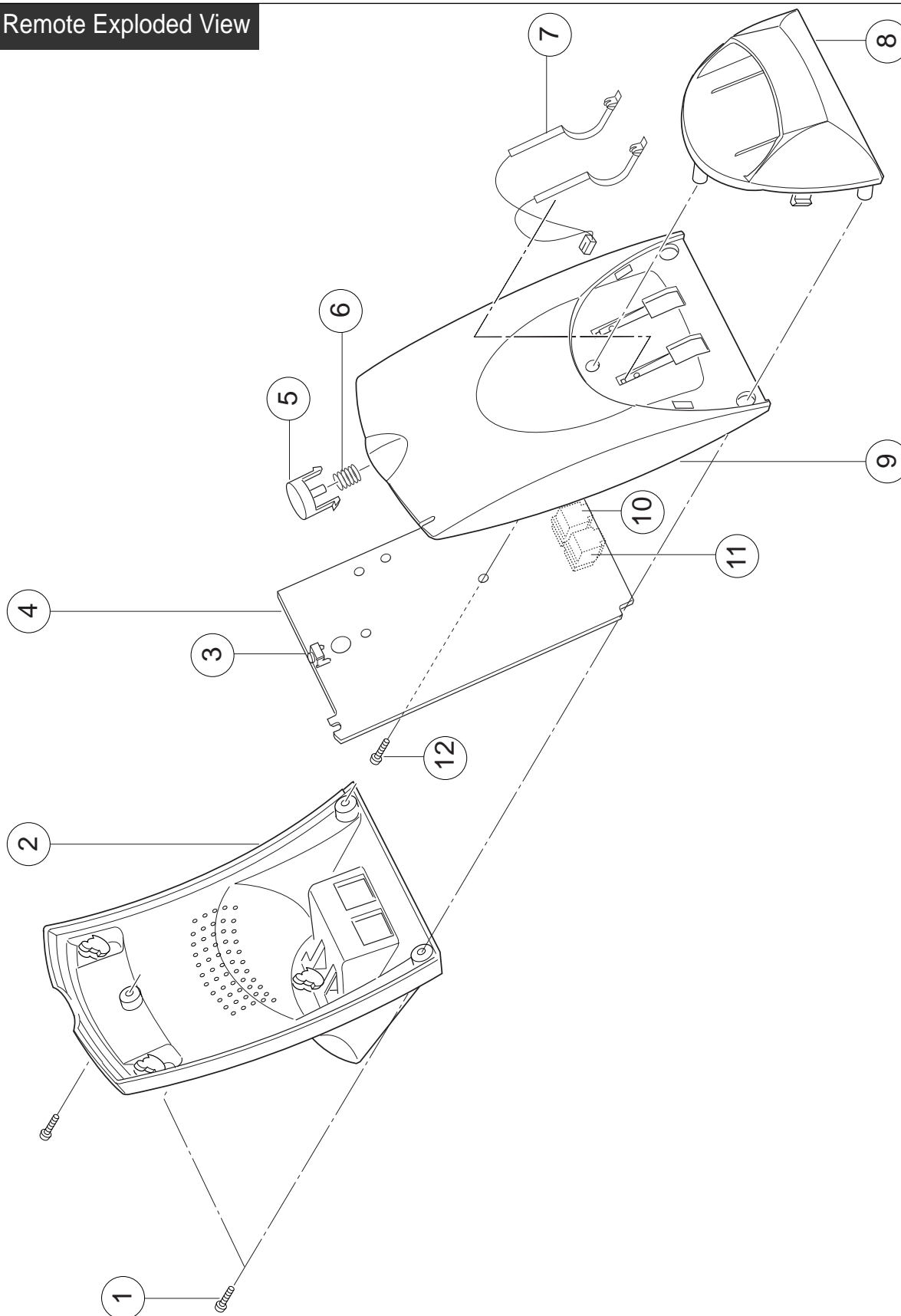


## CONTENTS

1. Exploded Views and Parts List
2. Electrical Parts List
3. Block Diagrams
4. PCB Views
5. Schematic Diagrams

# 10. Exploded Views and Parts List

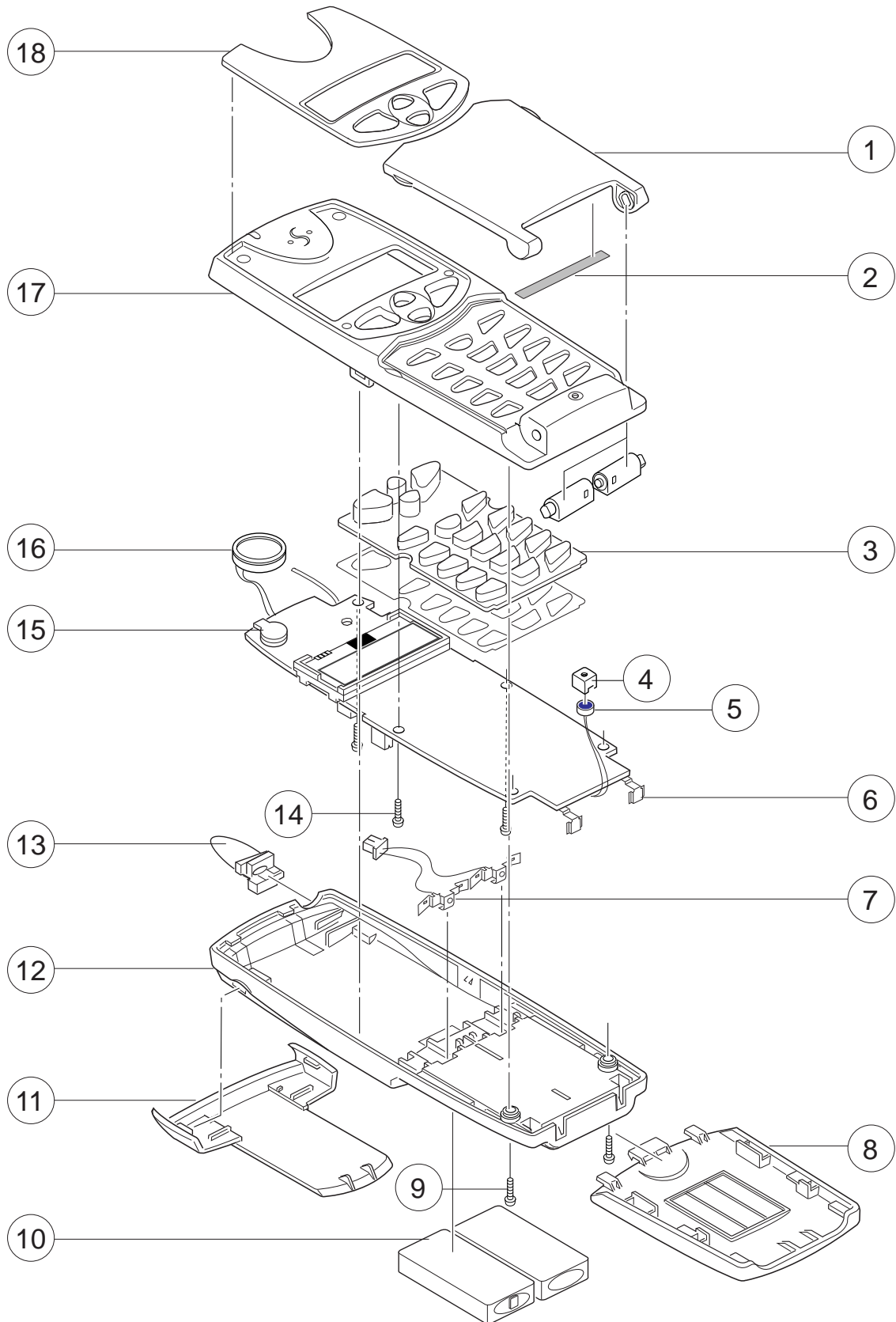
## 1. Remote Exploded View



## 2. Remote Part List

No.	Description	SEC. CODE			Remark
		DARK GRAY	VIOLET	WHITE	
1	SCREW(3 x 10)	6003-000159	6003-000159	6003-000159	
2	BASE PLATE	GG72-00031A	GG72-00031B	GG72-00031C	
3	SWITCH-TACT	3404-000115	3404-000115	3404-000115	
4	PBA MAIN (B/L)	GG92-00957A	GG92-00957A	GG92-00957A	
5	KEY TOP	GG72-00032A	GG72-00032B	GG72-00032C	
6	COIL SPRING	6107-000105	6107-000105	6107-000105	
7	CONTACT SPRING	GG71-00017A	GG71-00017A	GG71-00017A	
8	HOUSING PIECE	GG72-00028A	GG72-00028B	GG72-00028C	
9	HOUSING	GG72-00029A	GG72-00029B	GG72-00029C	
10	JACK MODULAR	3722-001377	3722-001377	3722-001377	
11	JACK-MODULAR	3722-001037	3722-001037	3722-001037	
12	SCREW(2.6 x 8)	6003-001007	6003-001007	6003-001007	

### 3. Base Exploded View



## 4. Base Part List

No.	Description	SEC. CODE			Remark
		DARK GRAY	VIOLET	WHITE	
1	FLIP COVER	GG72-00030A	GG72-00030B	GG72-00030C	
2	MAGNETIC SHEET	GH68-31129E	GH68-31129J	GH68-31129K	
3	KEY PAD	GG72-00038A	GG72-00038A	GG72-00038B	
4	MIC HOLDER	GG73-00008A	GG73-00008A	GG73-00008A	
5	MIC	3003-001030	3003-001030	3003-001030	
6	REMOTE CONTAG	GG71-00016A	GG71-00016A	GG71-00016A	
7	BATT CONTACT "S"	GG71-00015A	GG71-00015A	GG71-00015A	
8	BATT COVER	GG72-00026A	GG72-00026B	GG72-00026C	
9	SCREW (2 x5)	6001-001177	6001-001177	6001-001177	
10	BATTERY	GG43-00003A	GG43-00003A	GG43-00003A	
11	BZLT CLIP	GG72-00027A	GG72-00027B	GG72-00027C	
12	REAR COVER	GG72-00025A	GG72-00025B	GG72-00025C	
13	ANT REMOTE	GG72-00024A	GG72-00024A	GG72-00024B	
14	SCREW (2 x 4)	6001-000009	6001-000009	6001-000009	
15	BUZZER	3002-001086	3002-001086	3002-001086	
16	AUDIO RECEIVER	3009-001012	3009-001012	3009-001012	
17	FRONT COVER	GG72-00020A	GG72-00020B	GG72-00020C	
18	LCD WINDOW	GG72-00021A	GG72-00021B	GG72-00021C	

## 2. Electrical Parts List

Location No	Description	SEC Code	Remark
B/L	PBA MAIN-SPR5210, SEUK, UNKD, B/L	GG92-00957A	
BD1	DIODE-BRIDGE, S1ZB60	0402-000318	
ZD3	DIODE-ZENER, 1N4728A	0403-000131	
ZD4	DIODE-TVS, BZW06-13	0406-000117	
Q13	TR-SMALL SIGNAL, 2SC2812	0501-000338	
Q14	TR-SMALL SIGNAL, 2SC2812	0501-000338	
Q15	TR-SMALL SIGNAL, 2SC2812	0501-000338	
Q12	TR-SMALL SIGNAL, MMBT2222A	0501-000457	
Q900	TR-SMALL SIGNAL, MMBT2222A	0501-000457	
Q903	TR-SMALL SIGNAL, MMBT2222A	0501-000457	
Q10	TR-SMALL SIGNAL, MMBTA92	0501-000481	
Q902	TR-SMALL SIGNAL, MMBTA92	0501-000481	
Q9	TR-POWER, KSA1156-O	0502-000235	
Q901	TR-POWER, MMSTA06	0502-001053	
LED1	LED, ROUND, GRN	0601-001072	
U4	PHOTO-COUPLER	0604-000138	
U8	IC-TTL, 74LV573	0803-003023	
U426	IC-EPROM, 27LV512	1102-001022	
U11	IC-EEPROM, 24LC04B	1103-001096	
U3	IC-VOLTAGE REGULATOR, 1R33	1203-001390	
U422	IC-TRANSMITTER, TEA1118AT	1205-001166	
U433	IC-DEC, PCD50922H/C95	1205-001640	
V1	VARISTOR, ERZTCEAK121	1405-000105	
R5	R-METAL OXIDE, 68 ohm, 5 %, 1W	2003-000358	
R4	R-CHIP, 0 ohm, 5 %, 1/8 W, DA, TP, 3216	2007-000033	
R8	R-CHIP, 0 ohm, 5 %, 1/8 W, DA, TP, 3216	2007-000033	
R11	R-CHIP, 0 ohm, 5 %, 1/8 W, DA, TP, 3216	2007-000033	
R24	R-CHIP, 0 ohm, 5 %, 1/8 W, DA, TP, 3216	2007-000033	
R100	R-CHIP, 0 ohm, 5 %, 1/8 W, DA, TP, 3216	2007-000033	
R911	R-CHIP, 0 ohm, 5 %, 1/8 W, DA, TP, 3216	2007-000033	
R912	R-CHIP, 0 ohm, 5 %, 1/8 W, DA, TP, 3216	2007-000033	
R32	R-CHIP, 0 ohm, 5 %, 1/16 W, DA, TP, 1608	2007-000070	
R37	R-CHIP, 0 ohm, 5 %, 1/16 W, DA, TP, 1608	2007-000070	
R916	R-CHIP, 0 ohm, 5 %, 1/16 W, DA, TP, 1608	2007-000070	
R917	R-CHIP, 0 ohm, 5 %, 1/16 W, DA, TP, 1608	2007-000070	

Location No	Description	SEC Code	Remark
R61	R-CHIP, 180 ohm, 5 %, 1/16 W, DA, TP, 1608	2007-000450	
R89	R-CHIP, 330 ohm, 5 %, 1/16 W, DA, TP, 1608	2007-000076	
R56	R-CHIP, 470 ohm, 5 %, 1/16 W, DA, TP, 1608	2007-000077	
R58	R-CHIP, 470 ohm, 5 %, 1/16 W, DA, TP, 1608	2007-000077	
R914	R-CHIP, 1 kohm, 5 %, 1/16 W, DA, TP, 1608	2007-000078	
R99	R-CHIP, 1 kohm, 5 %, 1/16 W, DA, TP, 1608	2007-000078	
R64	R-CHIP, 1.2 kohm, 5 %, 1/16 W, DA, TP, 1608	2007-000122	
R65	R-CHIP, 2.7 kohm, 5 %, 1/16 W, DA, TP, 1608	2007-000081	
R906	R-CHIP, 2.7 kohm, 5 %, 1/16 W, DA, TP, 1608	2007-000081	
R41	R-CHIP, 4.7 kohm, 5 %, 1/16 W, DA, TP, 1608	2007-000084	
R77	R-CHIP, 4.7 kohm, 5 %, 1/16 W, DA, TP, 1608	2007-000084	
R78	R-CHIP, 4.7 kohm, 5 %, 1/16 W, DA, TP, 1608	2007-000084	
R87	R-CHIP, 4.7 kohm, 5 %, 1/16 W, DA, TP, 1608	2007-000084	
R88	R-CHIP, 4.7 kohm, 5 %, 1/16 W, DA, TP, 1608	2007-000084	
R91	R-CHIP, 4.7 kohm, 5 %, 1/16 W, DA, TP, 1608	2007-000084	
R92	R-CHIP, 4.7 kohm, 5 %, 1/16 W, DA, TP, 1608	2007-000084	
R40	R-CHIP, 10 kohm, 5 %, 1/16 W, DA, TP, 1608	2007-000090	
R54	R-CHIP, 10 kohm, 5 %, 1/16 W, DA, TP, 1608	2007-000090	
R82	R-CHIP, 10 kohm, 5 %, 1/16 W, DA, TP, 1608	2007-000090	
R85	R-CHIP, 10 kohm, 5 %, 1/16 W, DA, TP, 1608	2007-000090	
R900	R-CHIP, 10 kohm, 5 %, 1/16 W, DA, TP, 1608	2007-000090	
R901	R-CHIP, 10 kohm, 5 %, 1/16 W, DA, TP, 1608	2007-000090	
R908	R-CHIP, 10 kohm, 5 %, 1/16 W, DA, TP, 1608	2007-000090	
R909	R-CHIP, 10 kohm, 5 %, 1/16 W, DA, TP, 1608	2007-000090	
R902	R-CHIP, 12 kohm, 5 %, 1/16 W, DA, TP, 1608	2007-000091	
R83	R-CHIP, 20 kohm, 5 %, 1/16 W, DA, TP, 1608	2007-000093	
R90	R-CHIP, 30 kohm, 5 %, 1/16 W, DA, TP, 1608	2007-000096	
R34	R-CHIP, 47 kohm, 5 %, 1/16 W, DA, TP, 1608	2007-000097	
R67	R-CHIP, 47 kohm, 5 %, 1/16 W, DA, TP, 1608	2007-000097	
R84	R-CHIP, 47 kohm, 5 %, 1/16 W, DA, TP, 1608	2007-000097	
R86	R-CHIP, 47 kohm, 5 %, 1/16 W, DA, TP, 1608	2007-000097	
R93	R-CHIP, 47 kohm, 5 %, 1/16 W, DA, TP, 1608	2007-000097	
R48	R-CHIP, 56 kohm, 5 %, 1/16 W, DA, TP, 1608	2007-000098	
R910	R-CHIP, 68 kohm, 5 %, 1/16 W, DA, TP, 1608	2007-000100	
R79	R-CHIP, 100 kohm, 5 %, 1/16 W, DA, TP, 1608	2007-000102	

Location No	Description	SEC Code	Remark
R903	R-CHIP, 5.6 Mohm, 5 %, 1/16 W, DA, TP, 1608	2007-007703	
R905	R-CHIP, 820 ohm, 5 %, 1/16 W, DA, TP, 1608	2007-000121	
R915	R-CHIP, 2.2 kohm, 5 %, 1/16 W, DA, TP, 1608	2007-000124	
R68	R-CHIP, 3.9 kohm, 5 %, 1/16 W, DA, TP, 1608	2007-000125	
R70	R-CHIP, 3.9 kohm, 5 %, 1/16 W, DA, TP, 1608	2007-000125	
R39	R-CHIP, 330 kohm, 5 %, 1/16 W, DA, TP, 1608	2007-000133	
R60	R-CHIP, 1.5 kohm, 1 %, 1/16 W, DA, TP, 1608	2007-000239	
R62	R-CHIP, 1.5 kohm, 1 %, 1/16 W, DA, TP, 1608	2007-000239	
R907	R-CHIP, 1.5 kohm, 1 %, 1/16 W, DA, TP, 1608	2007-000239	
R76	R-CHIP, 10 ohm, 5 %, 1/16 W, DA, TP, 1608	2007-000309	
R57	R-CHIP, 130 kohm, 5 %, 1/16 W, DA, TP, 1608	2007-000368	
R53	R-CHIP, 2.4 kohm, 5 %, 1/16 W, DA, TP, 1608	2007-000512	
R33	R-CHIP, 33 kohm, 5 %, 1/8 W, DA, TP, 3216	2007-000777	
R73	R-CHIP, 39 ohm, 5%	2007-000839	
R95	R-CHIP, 39 ohm, 5 %, 1/8 W, DA, TP, 3216	2007-000840	
R94	R-CHIP, 47 ohm, 5 %, 1/8 W, DA, TP, 3216	2007-000950	
R49	R-CHIP, 510 ohm, 5 %, 1/16 W, DA, TP, 1608	2007-001002	
R63	R-CHIP, 750 ohm, 5 %, 1/16 W, DA, TP, 1608	2007-001157	
C905	C-CERAMIC, DISC, 470 pF, 20 %, 400V	2201-000560	
C906	C-CERAMIC, DISC, 470 pF, 20 %, 400V	2201-000560	
C38	C-CERAMIC CHIP, 470 nF, 2012	2203-000060	
C11	C-CERAMIC CHIP, 100 nF	2203-000189	
C14	C-CERAMIC CHIP, 100 nF	2203-000189	
C27	C-CERAMIC CHIP, 100 nF	2203-000189	
C34	C-CERAMIC CHIP, 100 nF	2203-000189	
C36	C-CERAMIC CHIP, 100 nF	2203-000189	
C41	C-CERAMIC CHIP, 100 nF	2203-000189	
C44	C-CERAMIC CHIP, 100 nF	2203-000189	
C46	C-CERAMIC CHIP, 100 nF	2203-000189	
C48	C-CERAMIC CHIP, 100 nF	2203-000189	
C49	C-CERAMIC CHIP, 100 nF	2203-000189	
C58	C-CERAMIC CHIP, 100 nF	2203-000189	
C6	C-CERAMIC CHIP, 100 nF	2203-000189	
C63	C-CERAMIC CHIP, 100 nF	2203-000189	
C68	C-CERAMIC CHIP, 100 nF	2203-000189	

Location No	Description	SEC Code	Remark
C7	C-CERAMIC CHIP, 100 nF	2203-000189	
C73	C-CERAMIC CHIP, 100 nF	2203-000189	
C74	C-CERAMIC CHIP, 100 nF	2203-000189	
C77	C-CERAMIC CHIP, 100 nF	2203-000189	
C903	C-CERAMIC CHIP, 100 nF	2203-000189	
C31	C-CERAMIC CHIP, 100 pF	2203-000236	
C65	C-CERAMIC CHIP, 100 pF	2203-000236	
C900	C-CERAMIC CHIP, 100 pF	2203-000236	
C901	C-CERAMIC CHIP, 150 nF	2203-005015	
C51	C-CERAMIC CHIP, 470 nF	2203-002494	
C76	C-CERAMIC CHIP, 10 nF	2203-000257	
C79	C-CERAMIC CHIP, 10 nF	2203-000257	
C5	C-CERAMIC CHIP, 10 pF	2203-000280	
C78	C-CERAMIC CHIP, 15 nF	2203-000372	
C39	C-CERAMIC CHIP, 1000 nF	2203-000476	
C52	C-CERAMIC CHIP, 2.2 nF	2203-000491	
C62	C-CERAMIC CHIP, 2.2 nF	2203-000491	
C89	C-CERAMIC CHIP, 2.2 nF	2203-000491	
C92	C-CERAMIC CHIP, 22 pF	2203-000624	
C83	C-CERAMIC CHIP, 33 nF	2203-000798	
C84	C-CERAMIC CHIP, 33 nF	2203-000798	
C88	C-CERAMIC CHIP, 56 pF	2203-001071	
C25	C-CERAMIC CHIP, 6.8 pF	2203-001109	
C26	C-CERAMIC CHIP, 6.8 pF	2203-001109	
C28	C-CERAMIC CHIP, 6.8 pF	2203-001109	
C30	C-CERAMIC CHIP, 6.8 pF	2203-001109	
C35	C-CERAMIC CHIP, 6.8 pF	2203-001109	
C42	C-CERAMIC CHIP, 6.8 pF	2203-001109	
C50	C-CERAMIC CHIP, 6.8 pF	2203-001109	
C59	C-CERAMIC CHIP, 6.8 pF	2203-001109	
C66	C-CERAMIC CHIP, 6.8 pF	2203-001109	
C71	C-CERAMIC CHIP, 6.8 pF	2203-001109	
C72	C-CERAMIC CHIP, 6.8 pF	2203-001109	
C75	C-CERAMIC CHIP, 6.8 pF	2203-001109	
C909	C-CERAMIC CHIP, 6.8 pF	2203-001109	

Location No	Description	SEC Code	Remark
C910	C-CERAMIC CHIP, 6.8 pF	2203-001109	
C97	C-CERAMIC CHIP, 6.8 pF	2203-001109	
C22	C-CERAMIC CHIP, 820 pF	2203-001222	
C37	C-CERAMIC CHIP, 150 nF	2203-005015	
C902	C-AL, 10 uF	2401-000486	
C20	JUMPER	3812-000101	
C3	C-AL, 100 uF	2401-000308	
C4	C-AL, 100 uF	2401-000308	
C32	C-AL, 220 uF	2401-000802	
C93	C-AL, SMD, 100 uF	2402-001042	
C29	C-TA, CHIP, 10 uF	2404-001037	
C94	C-TA, CHIP, 100 uF	2404-000278	
C95	C-TA, CHIP, 100 uF	2404-000278	
C86	C-TA, CHIP, 33 uF	2404-001032	
C87	C-TA, CHIP, 33 uF	2404-001032	
L4	INDUCTOR-SMD, 2.7 uH	2703-000301	
X1	CRYSTAL-SMD, 13.824 MHz	2801-003258	
SW1	SWITCH-TACT	3404-000115	
CN1	CONNECTOR-HEADER, BOX, 2P, 1R	3711-000827	
CN50	JACK-MODULAR, 6P/6C	3722-000260	
CN51	JACK-MODULAR, 6P/6C	3722-000260	
MIS2	SURGE ABSORBER	4715-000127	
ANT1	BASE ANT1-SPR5210	GG42-00004A	
ANT2	BASE ANT2-SPR5210	GG42-00005A	
PCB	BASE PCB-SPR5210	GG41-00010A	
R/L	PBA MAIN-R/L	GG92-01308A	
ZD1	DIODE-SCHOTTKY, PRL5819	0404-001005	
D1	DIODE-SCHOTTKY, BAT54AW	0404-001016	
D17	DIODE-ARRAY, 1SS184	0407-000123	
D14	DIODE-ARRAY, BAV70W	0407-001016	
Q20	TR-SMALL SIGNAL, MMBT2907A	0501-000462	
Q22	TR-SMALL SIGNAL, MMBT2222A	0501-000457	
Q24	TR-SMALL SIGNAL, MMBT2222A	0501-000457	
Q25	TR-SMALL SIGNAL, MMBT2222A	0501-000457	
Q6	TR-SMALL SIGNAL	0501-002046	

Location No	Description	SEC Code	Remark
Q18	TR-SMALL SIGNAL	0501-002046	
Q21	TR-DIGITAL, RN1104	0504-000168	
Q13	FET-GAAS, BSS138	0505-001064	
Q23	FET-SILICON, SI3443DV	0505-001165	
D16	LED	0601-001072	
U13	IC-EEPROM, 24C08	1103-001023	
U16	IC-DC/DC CONVERTER, TEA1206	1203-001401	
U11	IC-VOLTAGE REGULATOR	1203-001454	
U17	IC-DEC, PCD50917H	1205-001705	
R6	R-CHIP, 2 kohm, 1005	2007-000137	
R42	R-CHIP, 2 kohm, 1005	2007-000137	
R124	R-CHIP, 1 kohm, 1005	2007-000140	
R153	R-CHIP, 4.7 kohm, 1005	2007-000143	
R31	R-CHIP, 4.7 kohm, 1005	2007-000143	
R82	R-CHIP, 4.7 kohm, 1005	2007-000143	
R146	R-CHIP, 6.8 kohm, 1005	2007-000146	
R123	R-CHIP, 8.2 kohm, 1005	2007-000147	
R100	R-CHIP, 10 kohm, 1005	2007-000148	
R101	R-CHIP, 10 kohm, 1005	2007-000148	
R102	R-CHIP, 10 kohm, 1005	2007-000148	
R109	R-CHIP, 10 kohm, 1005	2007-000148	
R117	R-CHIP, 10 kohm, 1005	2007-000148	
R119	R-CHIP, 10 kohm, 1005	2007-000148	
R129	R-CHIP, 10 kohm, 1005	2007-000148	
R45	R-CHIP, 10 kohm, 1005	2007-000148	
R46	R-CHIP, 10 kohm, 1005	2007-000148	
R64	R-CHIP, 10 kohm, 1005	2007-000148	
R137	R-CHIP, 12 kohm, 1005	2007-000149	
R145	R-CHIP, 15 kohm, 1005	2007-000151	
R125	R-CHIP, 47 kohm, 1005	2007-000157	
R138	R-CHIP, 47 kohm, 1005	2007-000157	
R140	R-CHIP, 47 kohm, 1005	2007-000157	
R156	R-CHIP, 47 kohm, 1005	2007-000157	
R157	R-CHIP, 47 kohm, 1005	2007-000157	
R158	R-CHIP, 47 kohm, 1005	2007-000157	

Location No	Description	SEC Code	Remark
R143	R-CHIP, 100 kohm, 1005	2007-000162	
R155	R-CHIP, 100 kohm, 1005	2007-000162	
R147	R-CHIP, 100 kohm, 1005	2007-000162	
R148	R-CHIP, 100 kohm, 1005	2007-000162	
R150	R-CHIP, 100 kohm, 1005	2007-000162	
R41	R-CHIP, 100 kohm, 1005	2007-000162	
R44	R-CHIP, 100 kohm, 1005	2007-000162	
R47	R-CHIP, 100 kohm, 1005	2007-000162	
R66	R-CHIP, 100 kohm, 1005	2007-000162	
R7	R-CHIP, 1 Mohm, 1005	2007-000170	
R121	R-CHIP, 10 ohm, 1005	2007-000172	
R110	R-CHIP, 1.5 kohm, 1005	2007-000242	
R111	R-CHIP, 1.5 kohm, 1005	2007-000242	
R94	R-CHIP, 82 ohm, 1005	2007-001217	
R107	R-CHIP, 180 ohm, 1005	2007-001307	
R108	R-CHIP, 180 ohm, 1005	2007-001307	
R126	R-CHIP, 3.3 kohm, 1005	2007-001325	
R50	R-CHIP, 510 ohm, 1005	2007-002796	
R154	R-CHIP, 3.9 kohm, 1005	2007-007001	
R144	R-CHIP, 18 kohm, 1005	2007-007135	
R142	R-CHIP, 33 kohm, 1005	2007-007308	
R141	R-CHIP, 560 ohm, 1005	2007-007405	
C119	C-CERAMIC, CHIP, 100 pF	2203-000233	
C209	C-CERAMIC, CHIP, 100 pF	2203-000233	
C214	C-CERAMIC, CHIP, 100 pF	2203-000233	
C162	C-CERAMIC, CHIP, 10 nF	2203-000254	
C120	C-CERAMIC, CHIP, 10 pF	2203-000278	
C152	C-CERAMIC, CHIP, 10 pF	2203-000278	
C150	C-CERAMIC, CHIP, 1 nF	2203-000438	
C151	C-CERAMIC, CHIP, 1 nF	2203-000438	
C154	C-CERAMIC, CHIP, 1 nF	2203-000438	
C156	C-CERAMIC, CHIP, 1 nF	2203-000438	
C157	C-CERAMIC, CHIP, 1 nF	2203-000438	
C161	C-CERAMIC, CHIP, 1 nF	2203-000438	
C203	C-CERAMIC, CHIP, 1 nF	2203-000438	

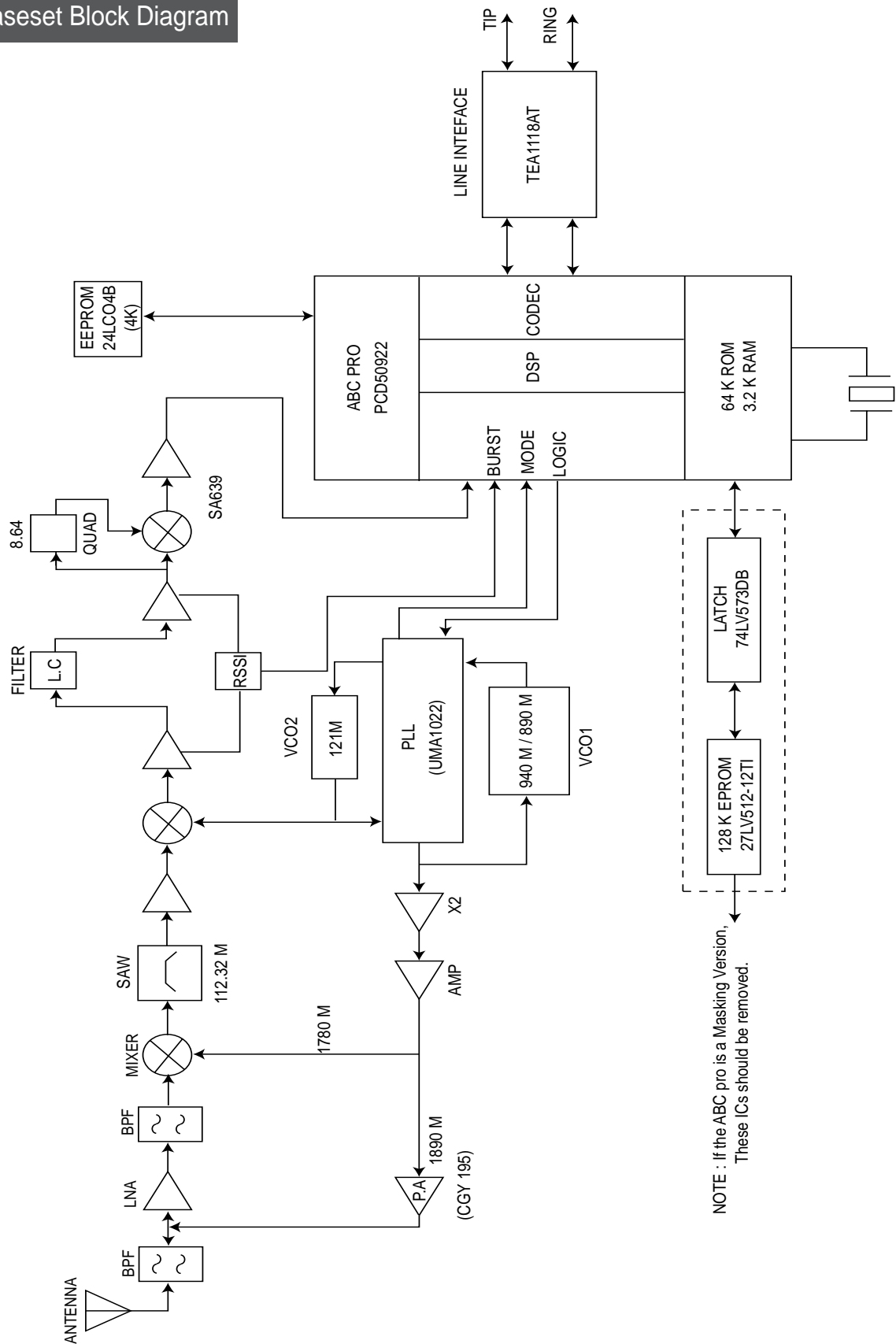
Location No	Description	SEC Code	Remark
C109	C-CERAMIC, CHIP, 1000 nF	2203-000476	
C123	C-CERAMIC, CHIP, 2.2 nF	2203-000489	
C124	C-CERAMIC, CHIP, 2.2 nF	2203-000489	
C128	C-CERAMIC, CHIP, 22 pF	2203-000627	
C137	C-CERAMIC, CHIP, 56 pF	2203-001072	
C138	C-CERAMIC, CHIP, 56 pF	2203-001072	
C139	C-CERAMIC, CHIP, 56 pF	2203-001072	
C101	C-CERAMIC, CHIP, 820 pF	2203-001221	
C118	C-CERAMIC, CHIP, 6.8 pF	2203-005056	
C125	C-CERAMIC, CHIP, 6.8 pF	2203-005056	
C127	C-CERAMIC, CHIP, 6.8 pF	2203-005056	
C140	C-CERAMIC, CHIP, 6.8 pF	2203-005056	
C153	C-CERAMIC, CHIP, 6.8 pF	2203-005056	
C49	C-CERAMIC, CHIP, 6.8 pF	2203-005056	
C113	C-CERAMIC, CHIP, 100 nF	2203-005061	
C115	C-CERAMIC, CHIP, 100 nF	2203-005061	
C117	C-CERAMIC, CHIP, 100 nF	2203-005061	
C121	C-CERAMIC, CHIP, 100 nF	2203-005061	
C131	C-CERAMIC, CHIP, 100 nF	2203-005061	
C132	C-CERAMIC, CHIP, 100 nF	2203-005061	
C217	C-CERAMIC, CHIP, 100 nF	2203-005061	
C4	C-TA, CHIP, 10 uF	2404-000120	
C1	C-TA, CHIP, 33 uF	2404-000226	
C3	C-TA, CHIP, 33 uF	2404-000226	
C2	C-TA, CHIP, 100 uF	2404-000277	
C6	C-TA, CHIP, 100 uF	2404-000277	
L5	INDUCTOR-SMD, 2.7 uH	2703-000301	
L3	INDUCTOR-SMD, 1 uH	2703-001183	
L4	INDUCTOR-SMD, 1 uH	2703-001183	
L6	INDUCTOR-SMD, 10 uH	2703-001712	
X1	CRYSTAL-UNIT, 13.824 MHz	2801-003806	
AU1	BUZZER-MAGNETIC	3002-001016	
SW1	SWITCH-REED	3409-001095	
CN1	CONNECTOR-HEADER	3711-000827	
CN2	CONNECTOR-HEADER	3711-000907	

---

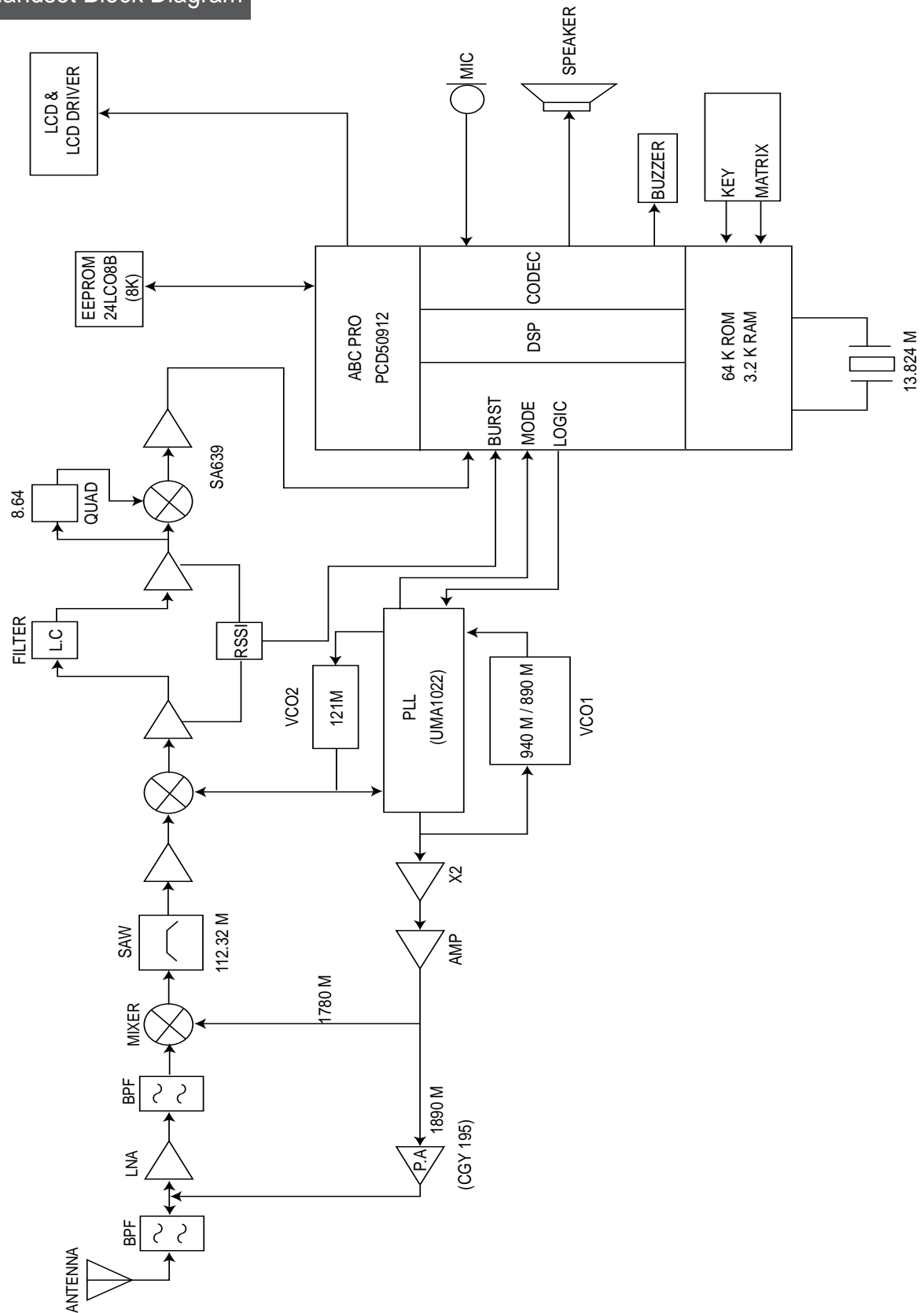
Location No	Description	SEC Code	Remark
CN3	CONNECTOR-HEADER	3711-000907	
LCD1	DISPLAY LCD-SPR5210	GG07-00002A	
MODULE1	ELA UNIT-SPR5210 R/RF	GG96-00759A	
U15	AUDIO-RECEIVER.150 ohm	3009-001012	
ANT	REMOTE ANT-SPR5210	GG42000006A	
PCB	REMOTE PCB-SPR5210	GG41-00016A	
MIC1	MICRO PHONE	3003-001030	

# 3. Block Diagrams

## 1. Basetset Block Diagram

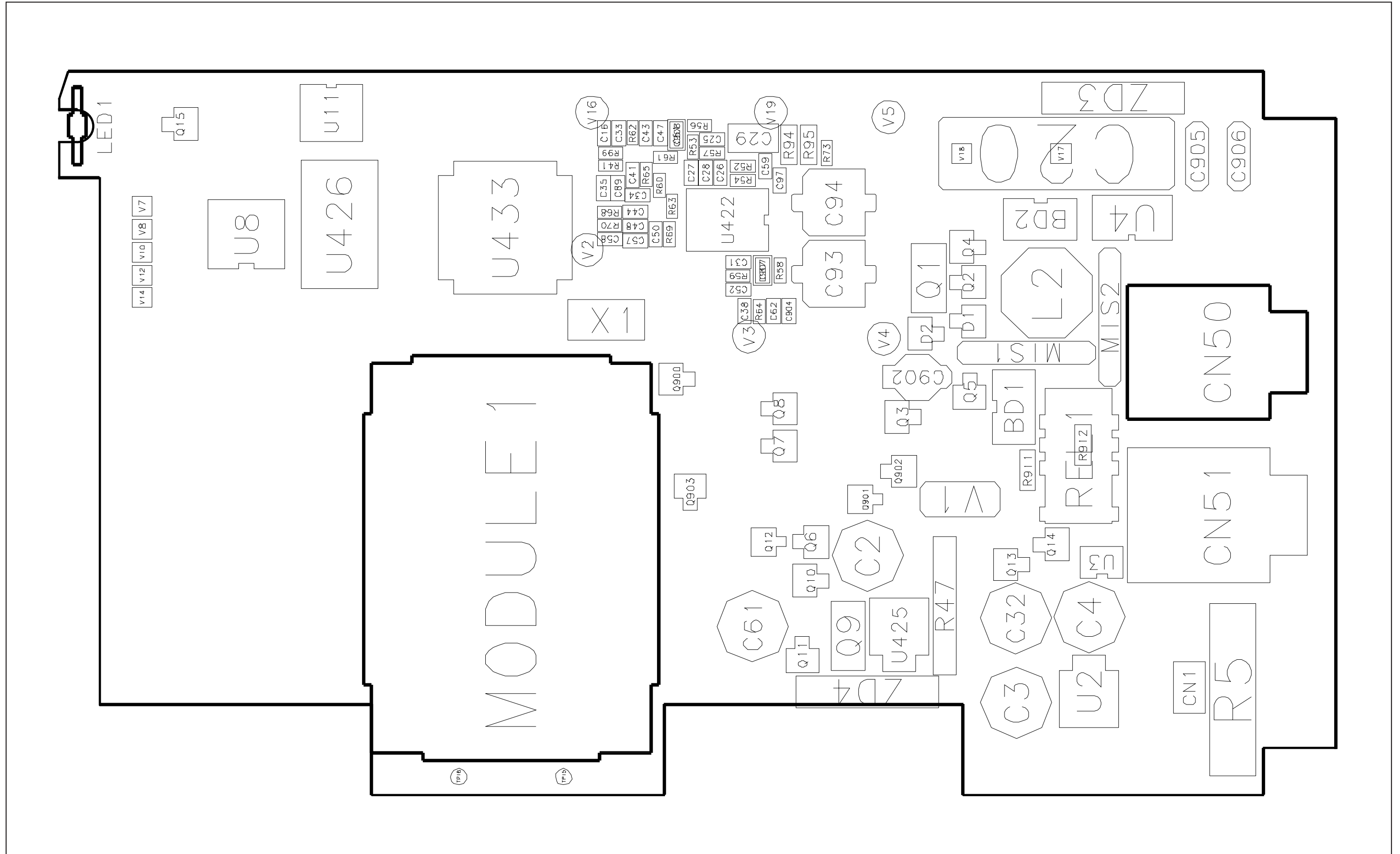


2. Handset Block Diagram

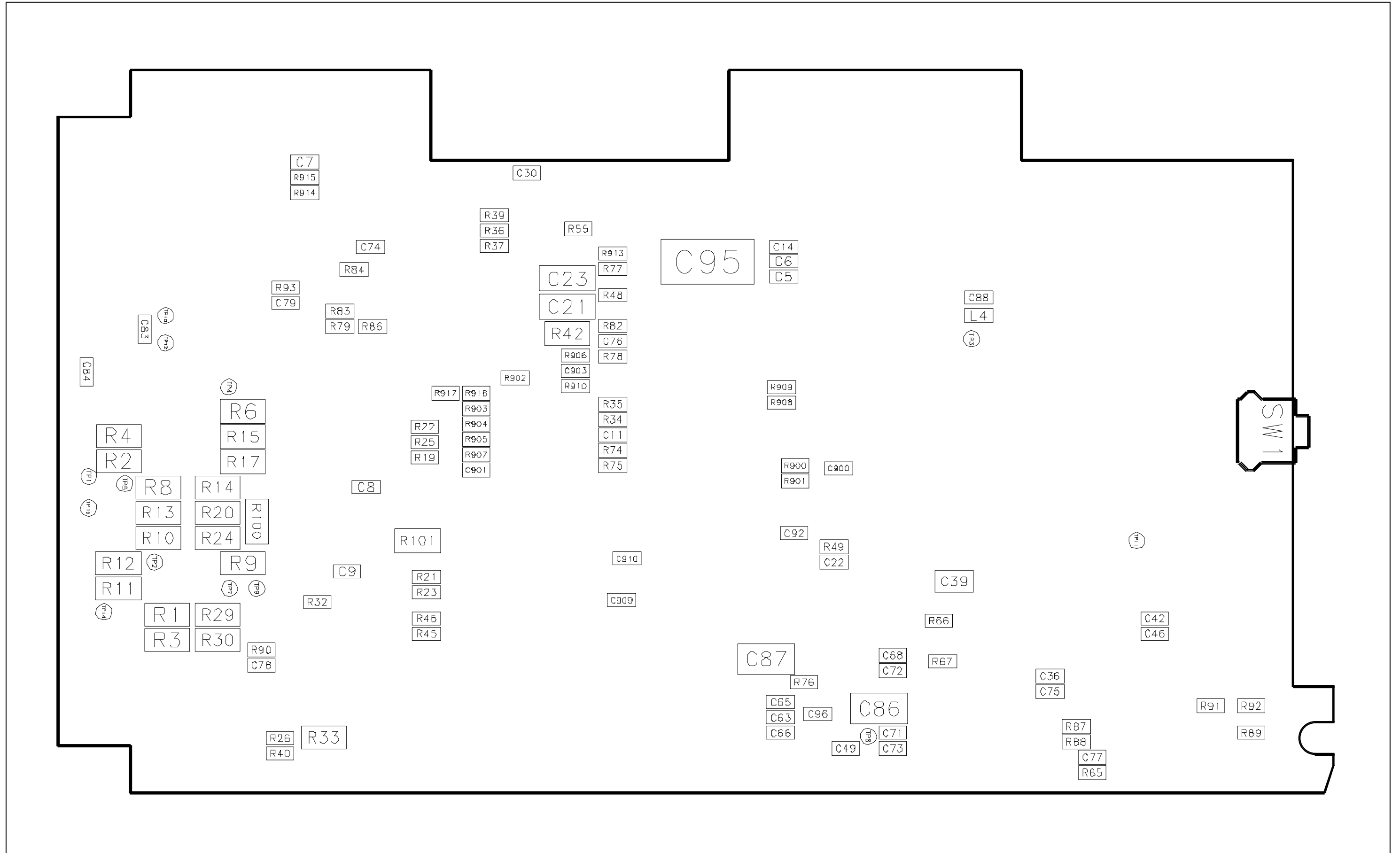


# 4. PCB Views

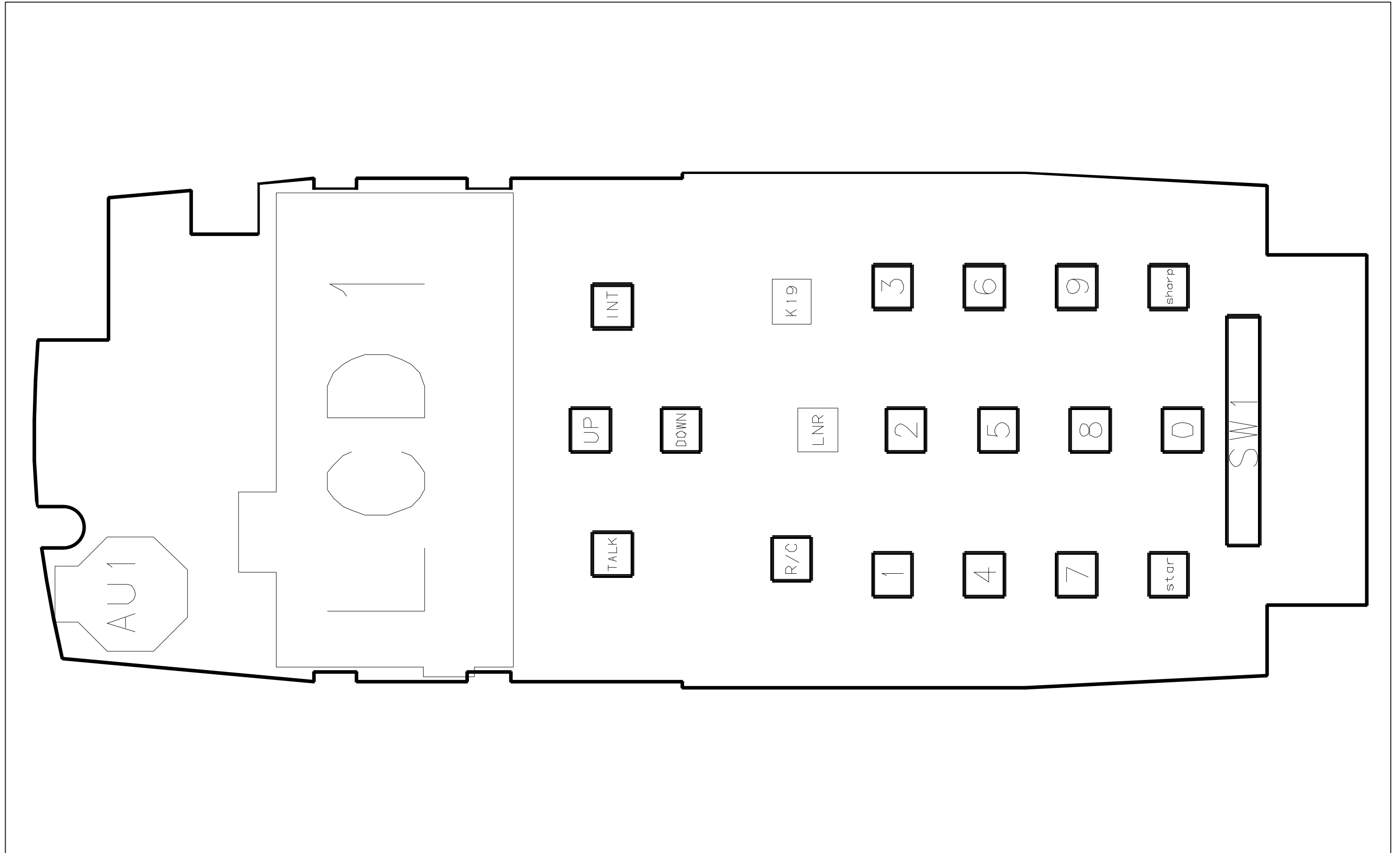
## 1. Basetop Top View



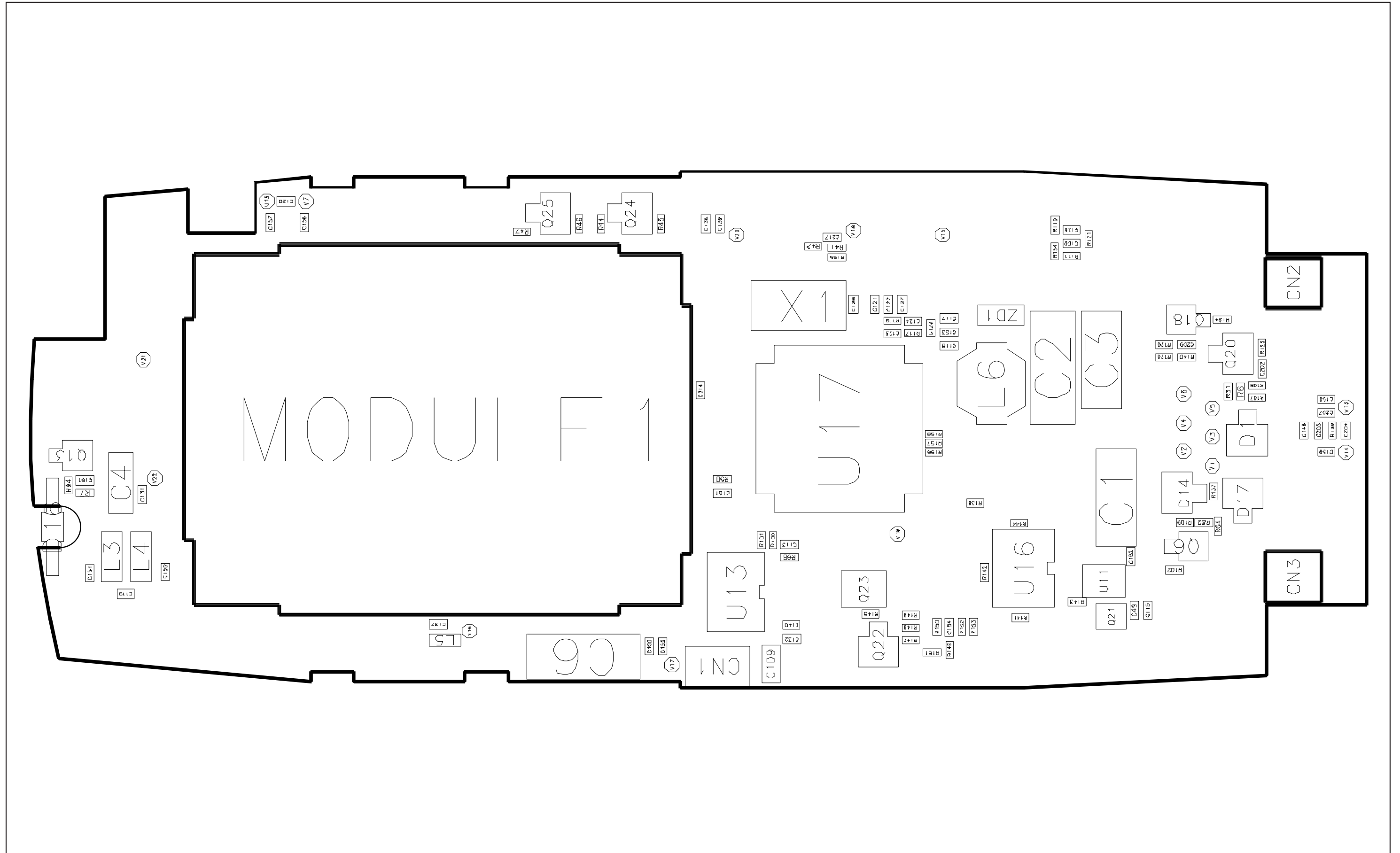
2. Baset Bottom View



3. Handset Top View

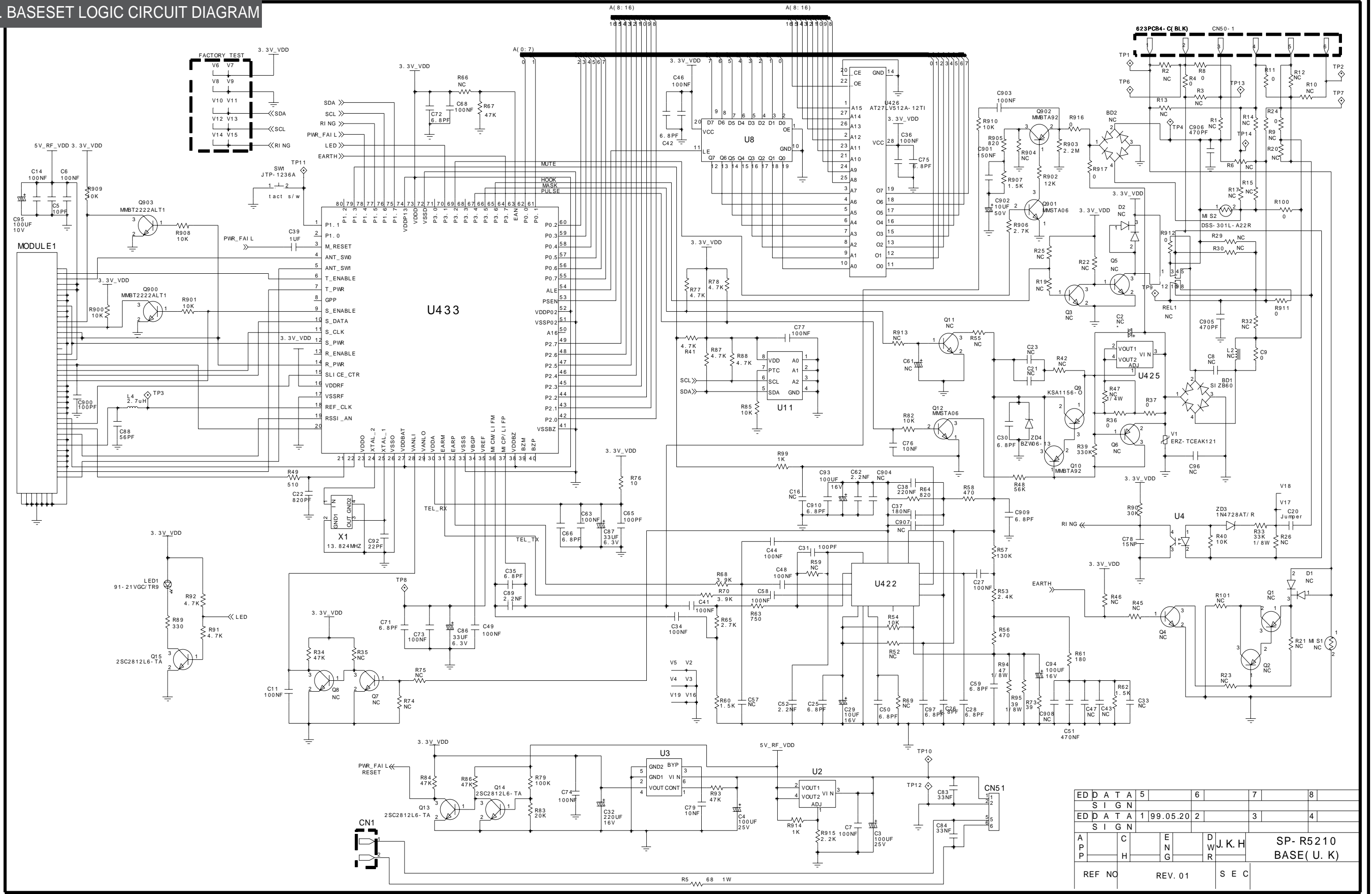


### 4. Handset Bottom View

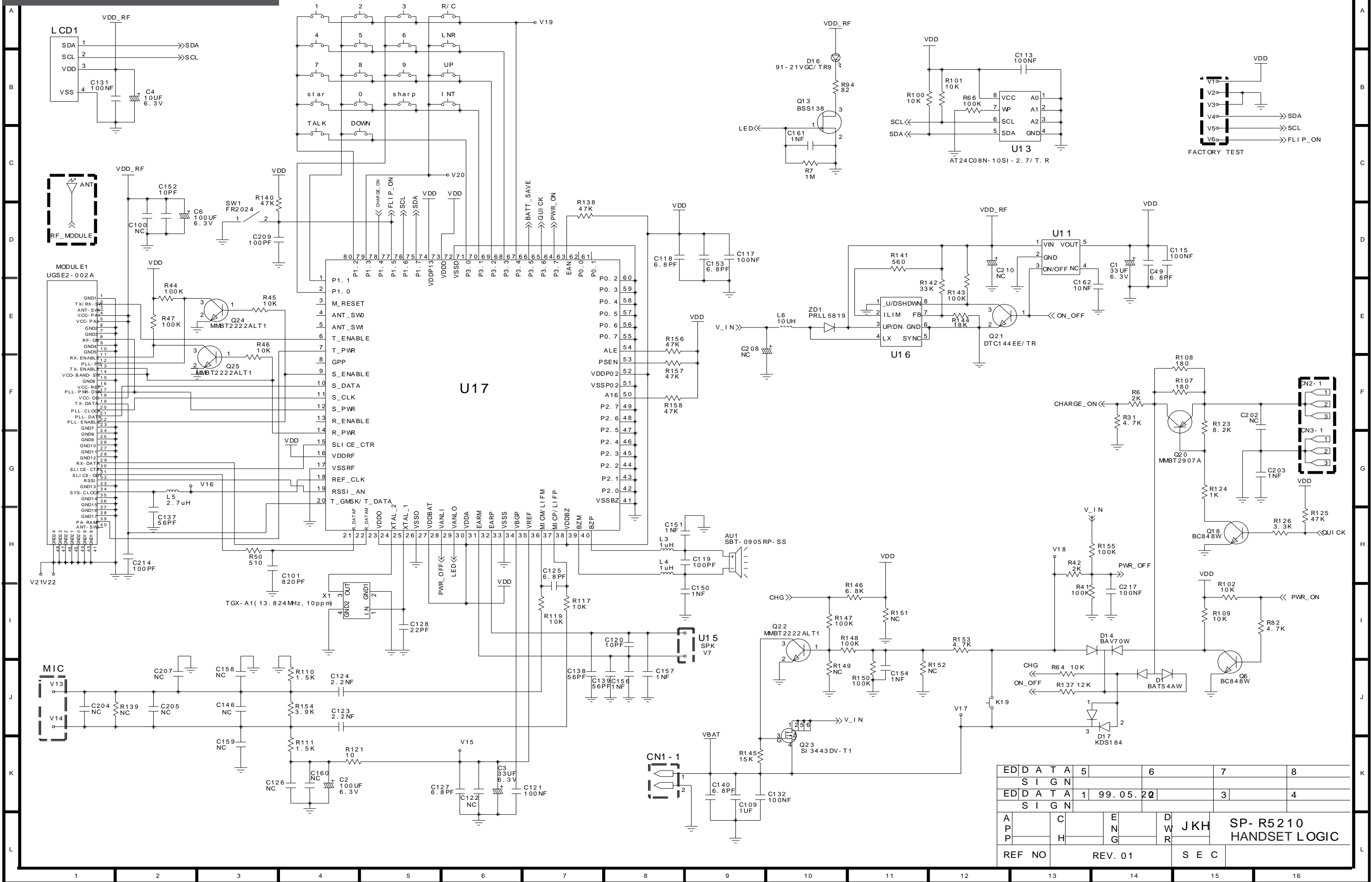


# 5. Schematic Diagrams

## 1. BASESET LOGIC CIRCUIT DIAGRAM



2. HANDSET LOGIC CIRCUIT DIAGRAM



ED	D	A	5	6	7	8
ED	D	A	1	99.05.20	3	4
A	C	E	D	J	K	H
P	H	N	W	R		
REF NO	REV. 01			S E C		

SP- R5210  
HANDSET LOGIC

