



Model:SW-204B

CD-R/RW service manual

CONTENTS

- Specifications
- Cautions at Service
- External Part Name
- Exploded Views & Part List
- Packing Options
- Block Diagram
- Troubleshooting
- Circuit Diagram
- Main Components Block Diagram & Pin Descriptions
- Electrical Parts List

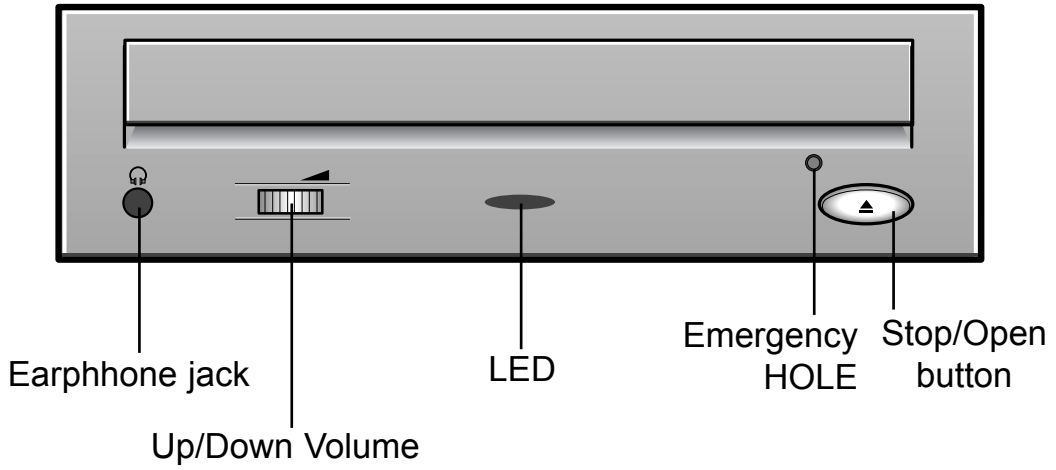


The design and part of this product is subject to change without prior notice for performance improvement.

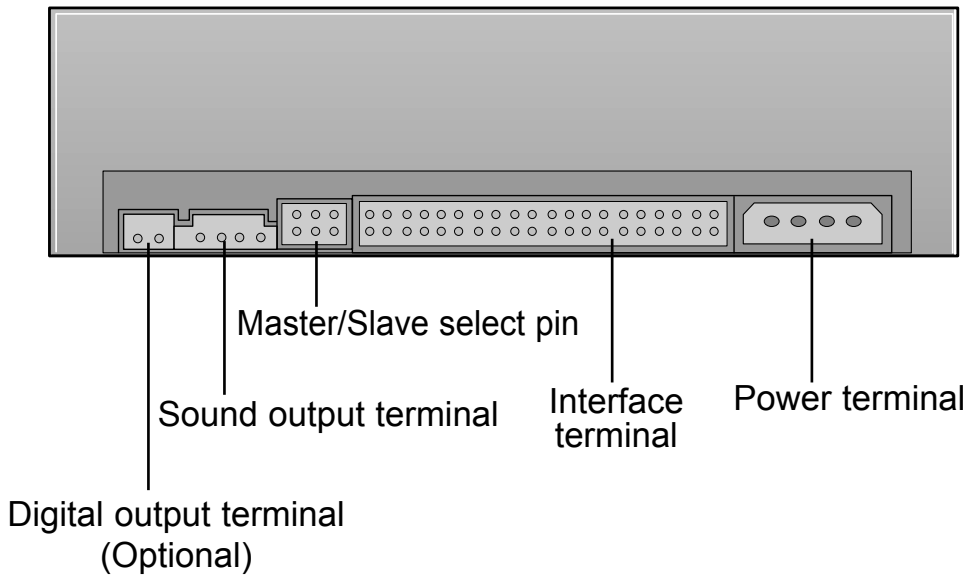


- External Part Name

1. Front



2. Rear



● Specifications

1. General Specifications

- Drive type : Computer built-in
- Power consumption : DC +5V, 1.5A
DC +12V, 1.5A
- Dimensions : 149mm(W)X42.5mm(H)X200mm(L)
- Net Weight : 950g

2. Electrical Features

- Interface : ATAPI BUS(IDE)
- Data transfer rate :
Write(CD-R) : 150KBytes/Sec(1X)
300KBytes/Sec(2X)
600KBytes/Sec(4X)
Write(CD-RW) : 3,600KBytes/Sec(2X)
Resd(MAX) : 1,500~3.600KBytes/Sec(Cav10X~24X)
- Access time : 120ms (Random. TYPICAL)

- Buffer Capacity : 2Mbyte
- Error ratio : Mode 1: Below 10^{-12}
Mode 2: Below 10^{-9}
- Frequency response : 20Hz~20KHz (Lineout)
100Hz~20KHz (H/P out)
- Signal to noise ratio : 75dB(1KHz, Limeout)
- Distortion factor : 0.15% Less than(1KHz)
- Channel separation : 60dB(1KHz, Limeout)
55dB(1KHz, H/P out)
- Used laser : Semiconductor laser
- Audio Output : Line out 0.70 \pm 20%(vrms), 47K Ω

● Cautions at Service

1. General Items

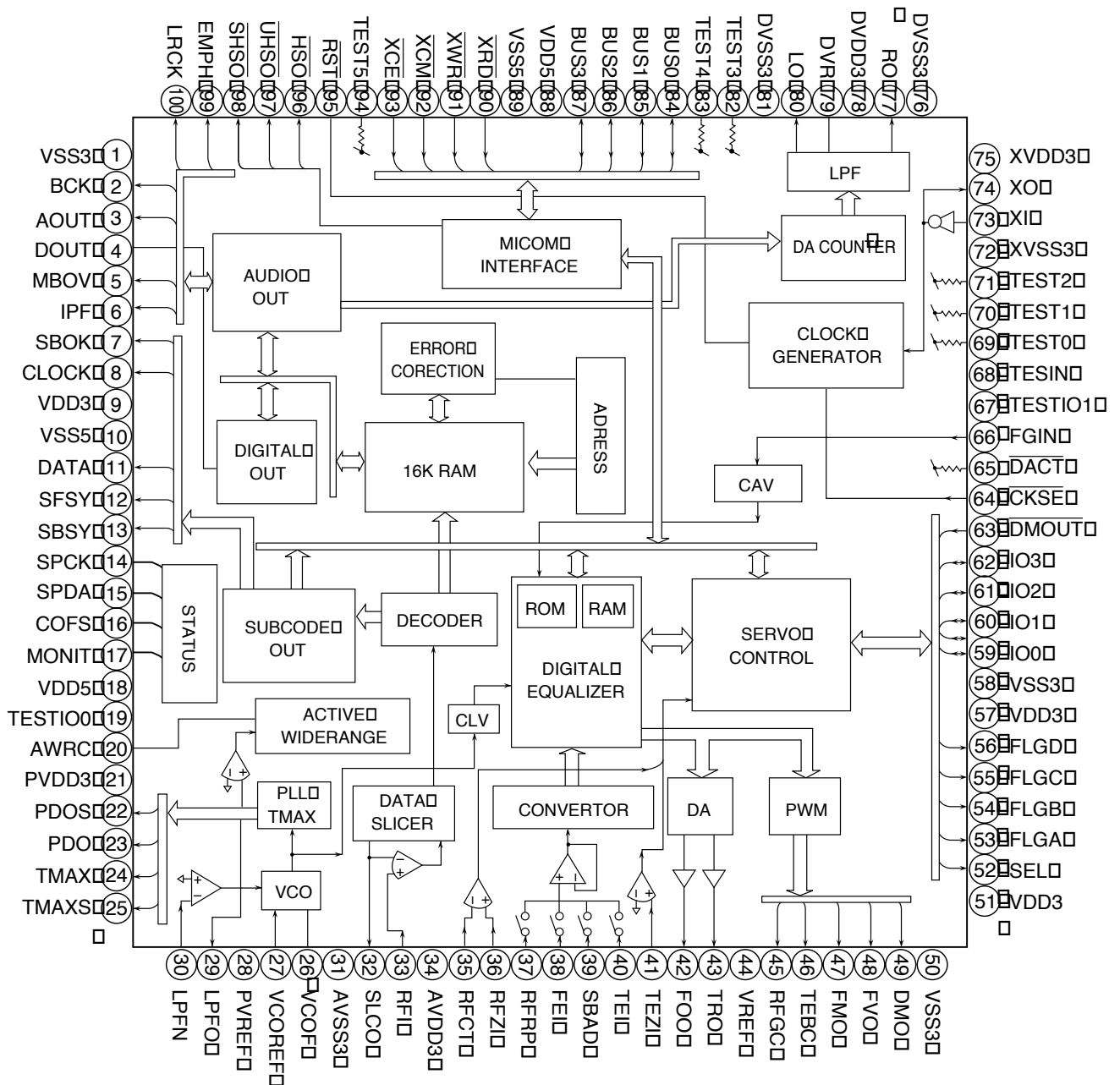
- 1) Be careful not to have your eyes or a part of body touch with laser diode at repair because this product uses laser diode.
- 2) Do not disassemble Pick-up at repair. If the laser diode is bad, replace the entire Pick-up.
- 3) Keep away from TV or other electrical units at repair to prevent influence from surrounding units.
- 4) If you replace the parts during repair, be sure to unplug the power cable before replacement.
- 5) If you insert a disc into the drive, be sure to load it correctly.
- 6) Because this unit can't be used by itself, surely mount it on PC (586 DMA support) and check the operations in use of private device driver floppy diskette.
Refer to Instruction manual.
- 7) This unit has many parts with features related to safety and especially, for essential parts, the importance is indicated on circuit diagram and part list.
Be certain to use the parts with same specifications at replacing these parts.

2. Earthing cautions at handling Pick-up

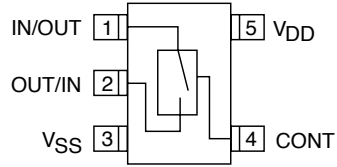
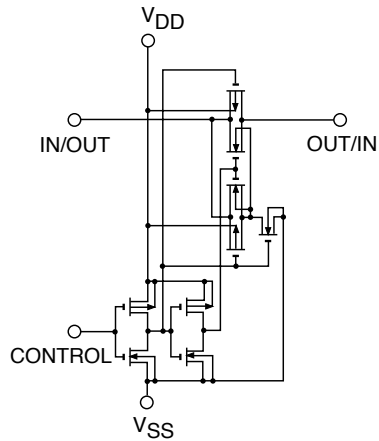
- Because the laser diode in optical Pick-up is subject to get out of order due to the potential difference occurring by electricity load charged in clothes or bodies, observe the following earthing items at handling.
- 1) Body earthing(hand) : Be sure to wear a wrist strip with one side earthed.(Impedance : Below 10 Ω).
It removes the electricity formed in body.
 - 2) Work table earthing : Put the earthed conductive plate (Impedance : Below 10 Ω) such as copper plate on work table.
 - 3) Cautions for clothes : Do not have any clothes touch with Pick-up because the electricity formed in clothes is destroyed easily.

● Main Components Block Diagram and Pin Description

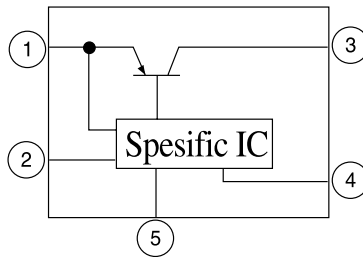
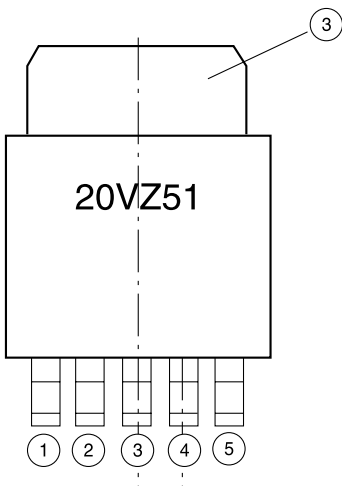
● TC9450F(DSP CHIP)



● TC4S66F

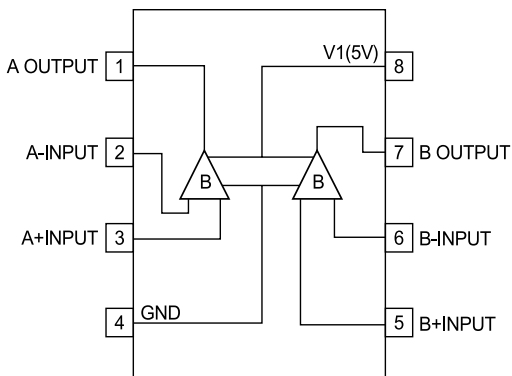


● PQ20WZ51
- Pin configuration

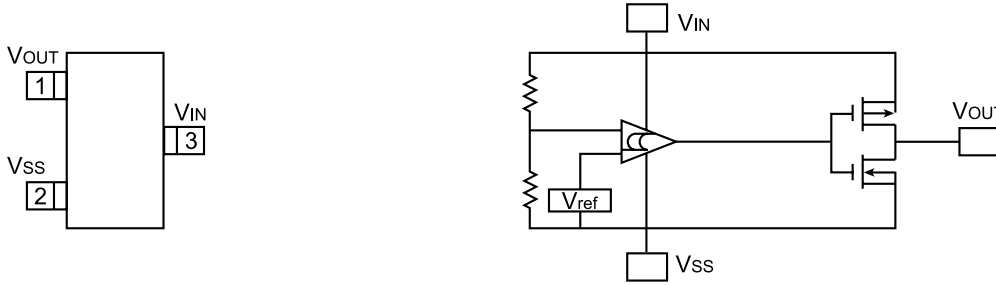


Pin No	Pin Name
1	DC input(VIN)
2	ON/OFF control terminal(VC)
3	DC output(VO)
4	Output voltage minute adjustment terminal(VADJ)
5	GND

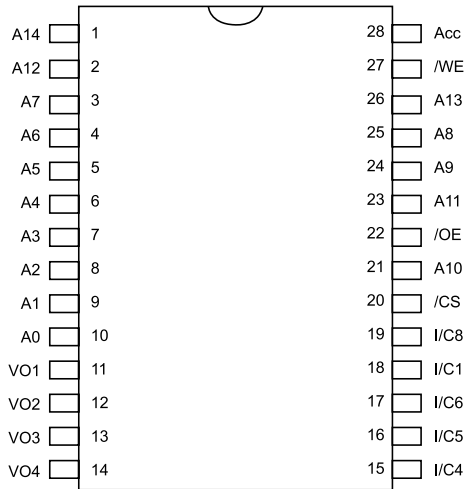
● NJM3414AV



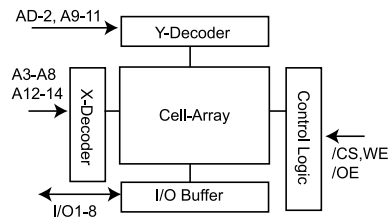
● ELM9735



● KM62256

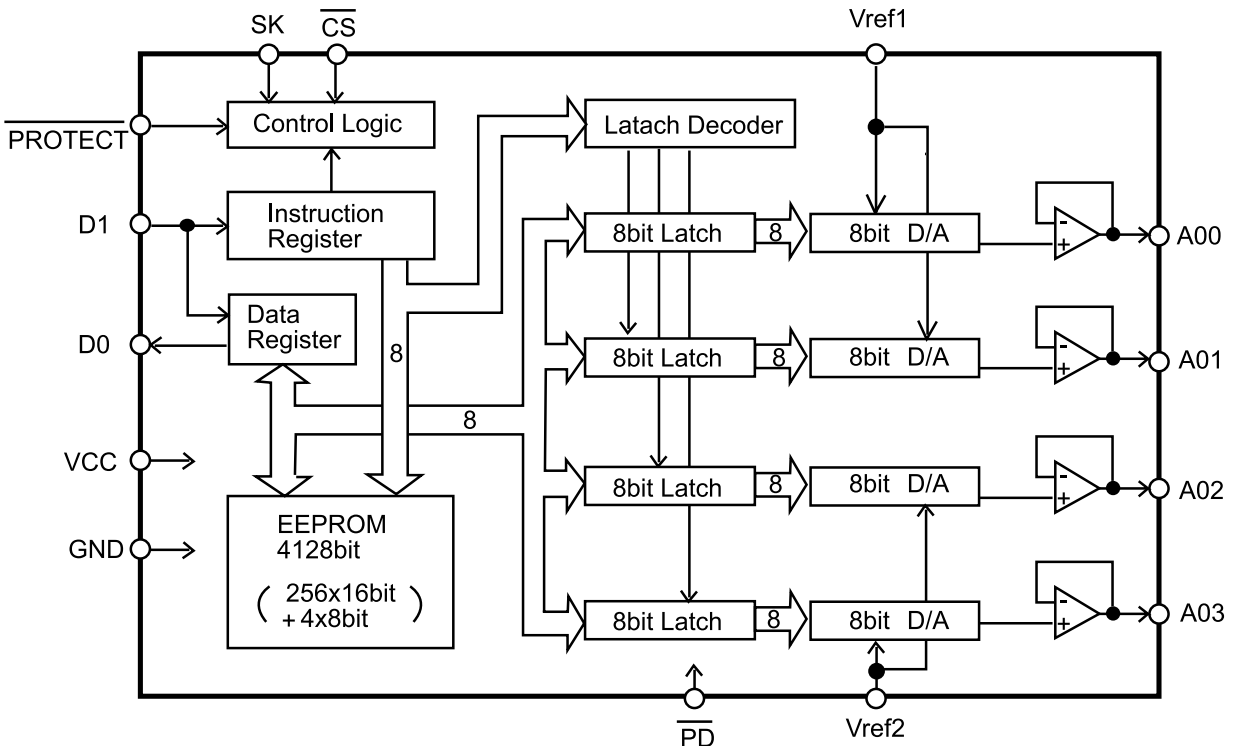


FUNCTIONAL BLOCK DIAGRAM

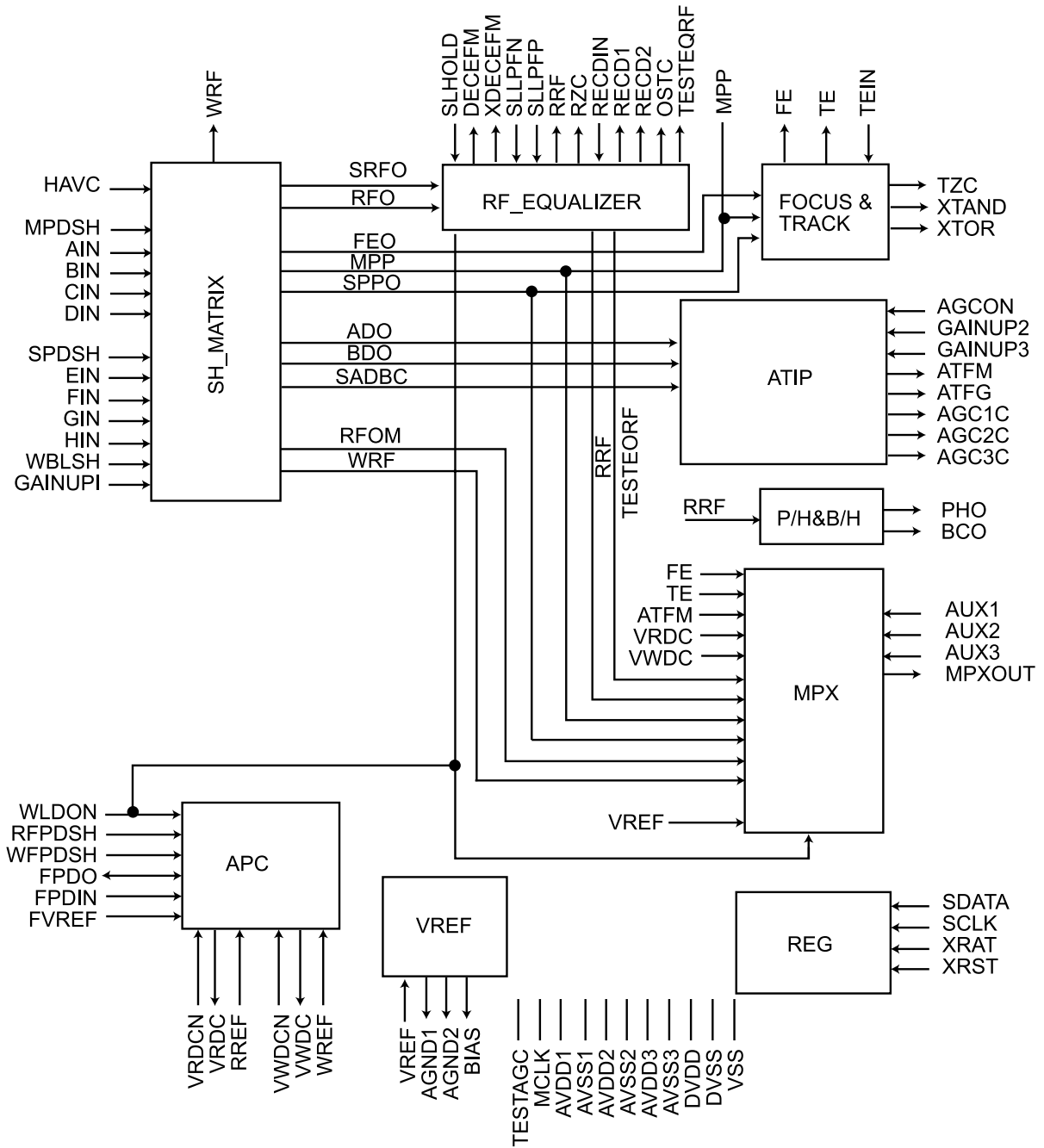


Pin Name	Function
A0~A14	Address Inputs
/WE	Write Enable Input
/CS	Chip Select Input
/OE	Output Enable Input
I/O1-I/O8	Data Input/Output
Vcc	Power(5V)
Vss	Ground

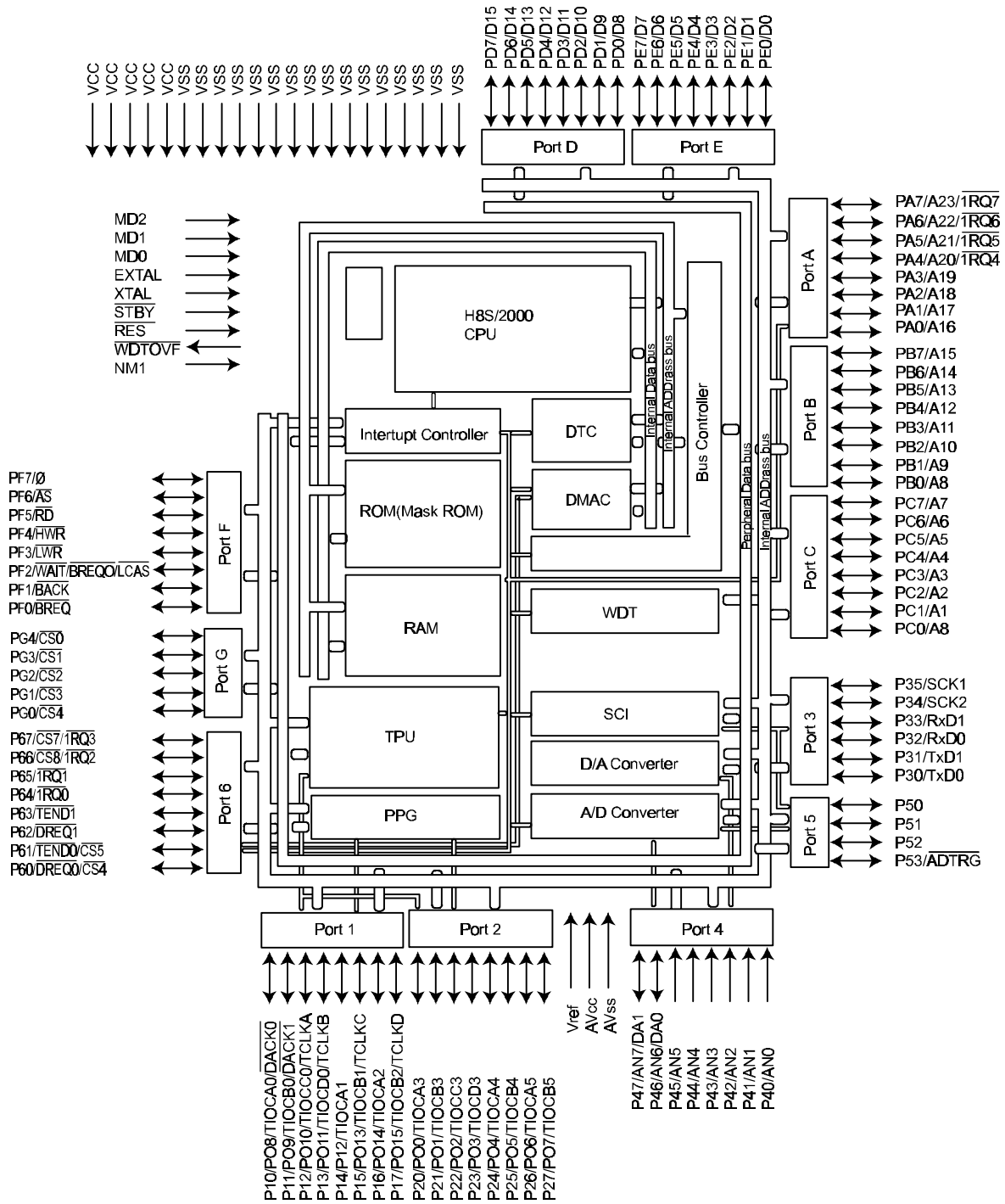
● AK9844



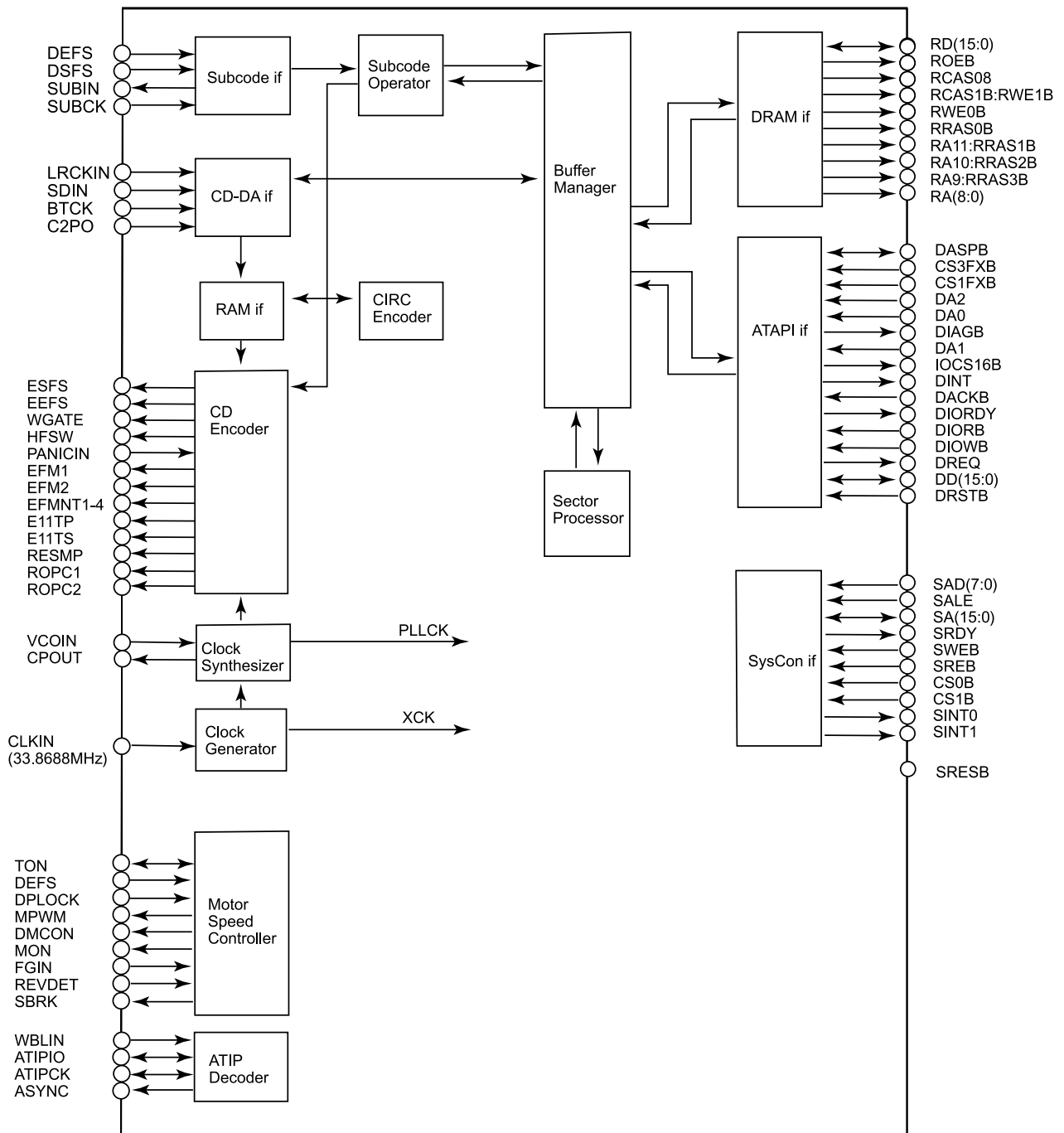
● AK9844



µ HBS/2350



● RL5E808



● 28SF040A

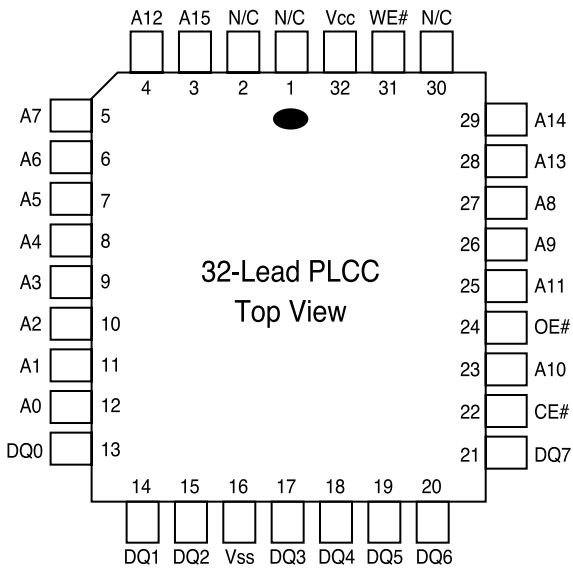


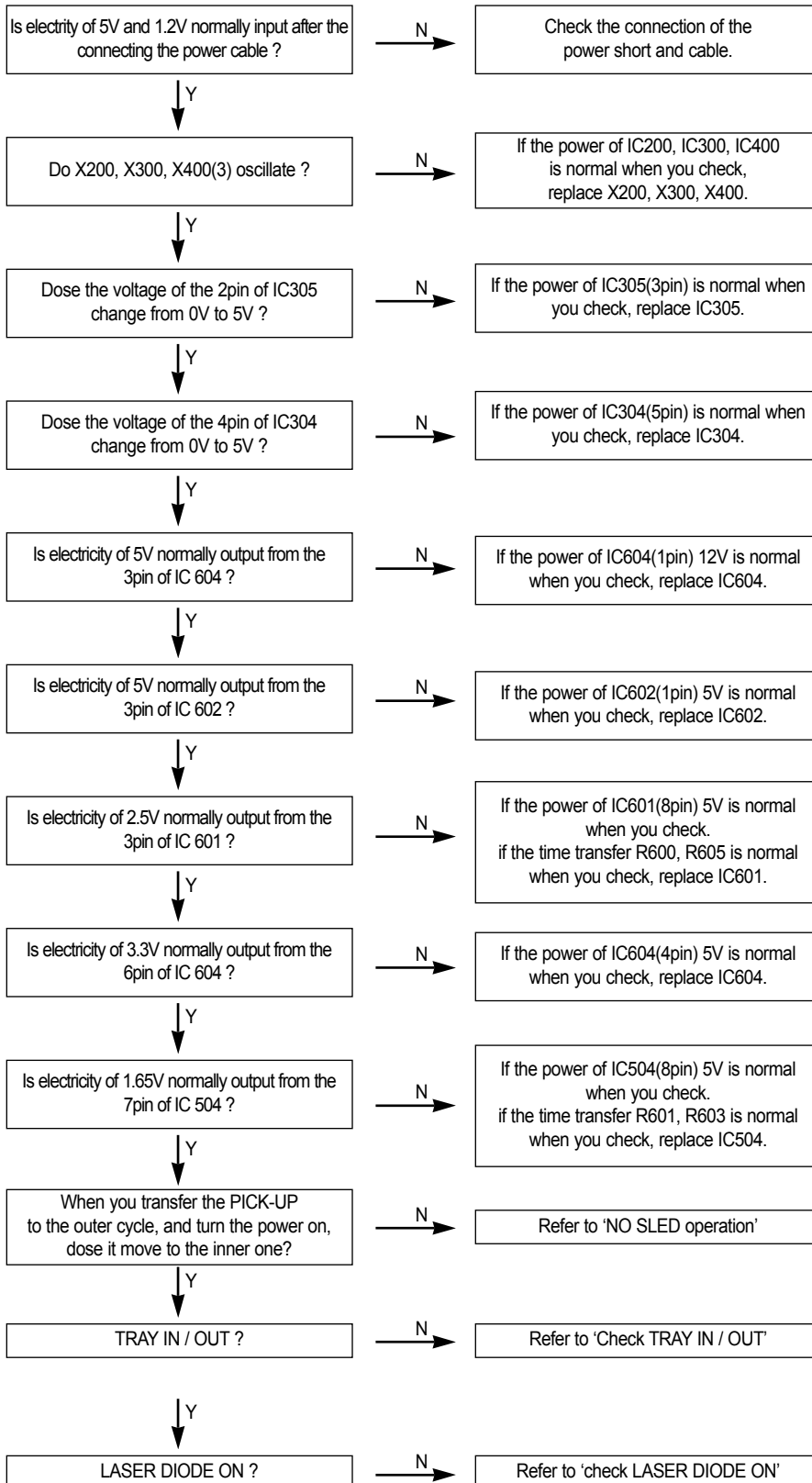
TABLE 1: PIN DESCRIPTION

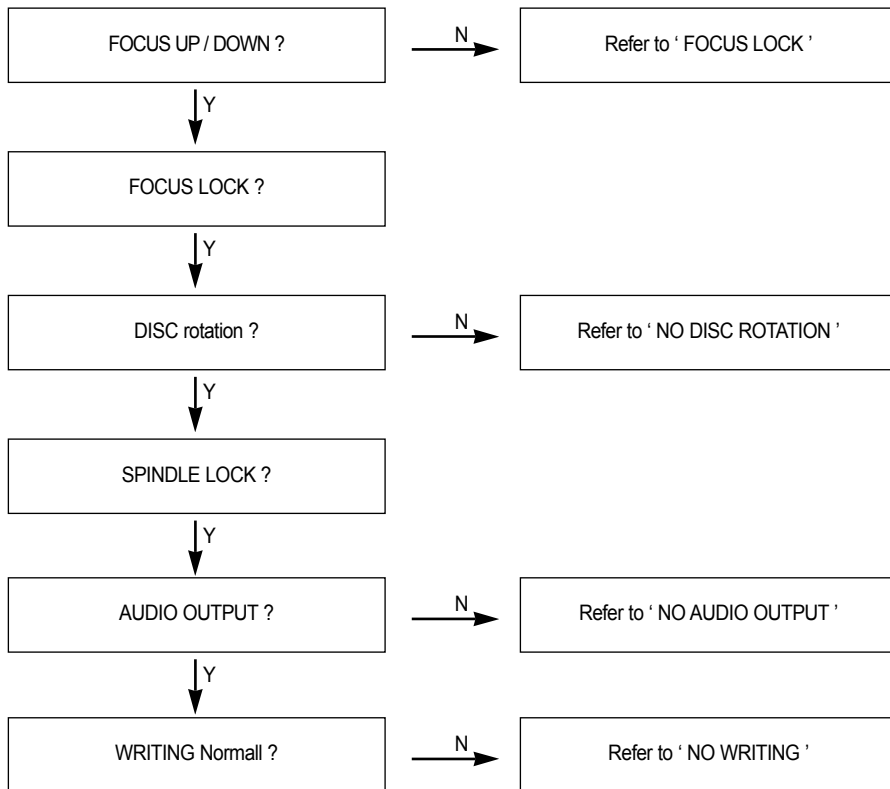
Symbol	Pin Name	Functions
A18-A8	Row Address Inputs	To provide memory addresses. Row addresses define a sector.
A7-A0	Column Address Inputs	Selects the byte within the sector.
DQ7-DQ0	Data Input/Output	To output data during read cycles and receive input data during cycles. Data is internally latched during a write cycle. The outputs are tri-state when OE#, CE# is high.
CE#	Chip Enable	To activate the device when CE# is low.(1)
OE#	Output Enable	To gate the data output buffers.(1)
WE#	Write Enable	To control the write operations.(1)
Vcc	Power Supply	To provide 5-volt supply (+10%)for the SST28SF040A, and 2.7-volt supply(2.7-3.6V) for the SST28VF040A
Vss	Ground	

Note:(1) This pin is considered an input for the purposes of the DC Operation Characteristics Table.

● Trouble Shooting

Check the power source and initial state.





No SLED OPERATION

When you transfer the pick-up to the outer cycle and turn the power on, dose the pick-up move to the inner one ?

N →

SLED operation of normal.

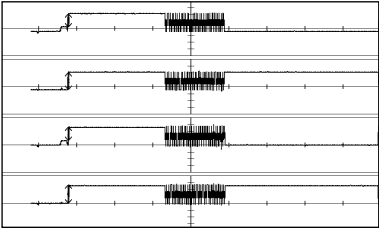
↓ Y

The below waveform is outputted in IC301 76,77,78,79pin ?

N →

If the constant of IC300 and GND, pattern's when you check, replace.

↓ Y



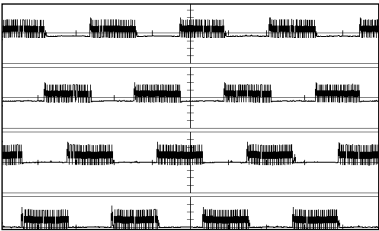
↓ Y

The below waveform is outputted in IC503 2,3, 34, 35pin ?

N →

If the constant of IC503 and GND, pattern's when you check, replace.

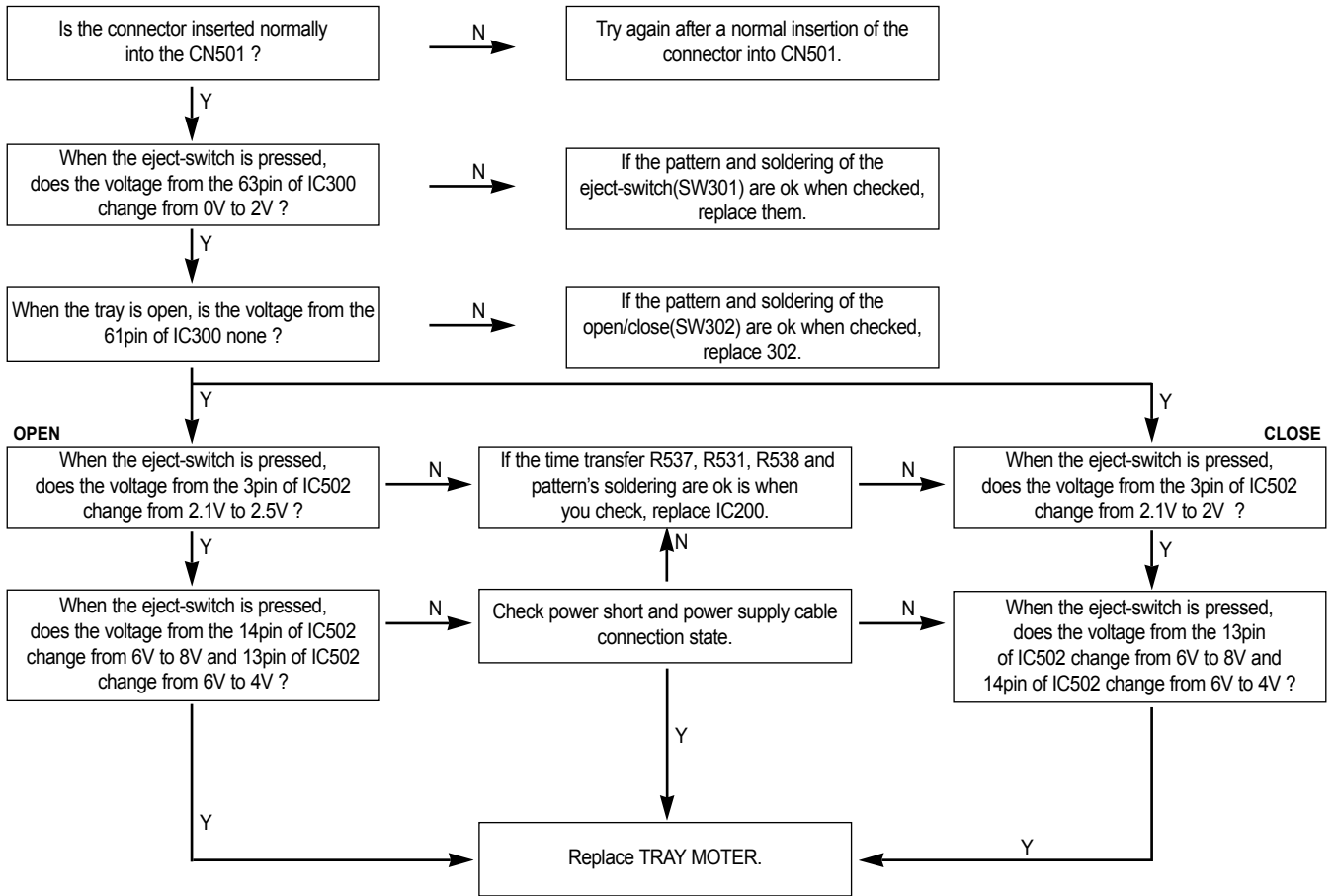
↓ Y



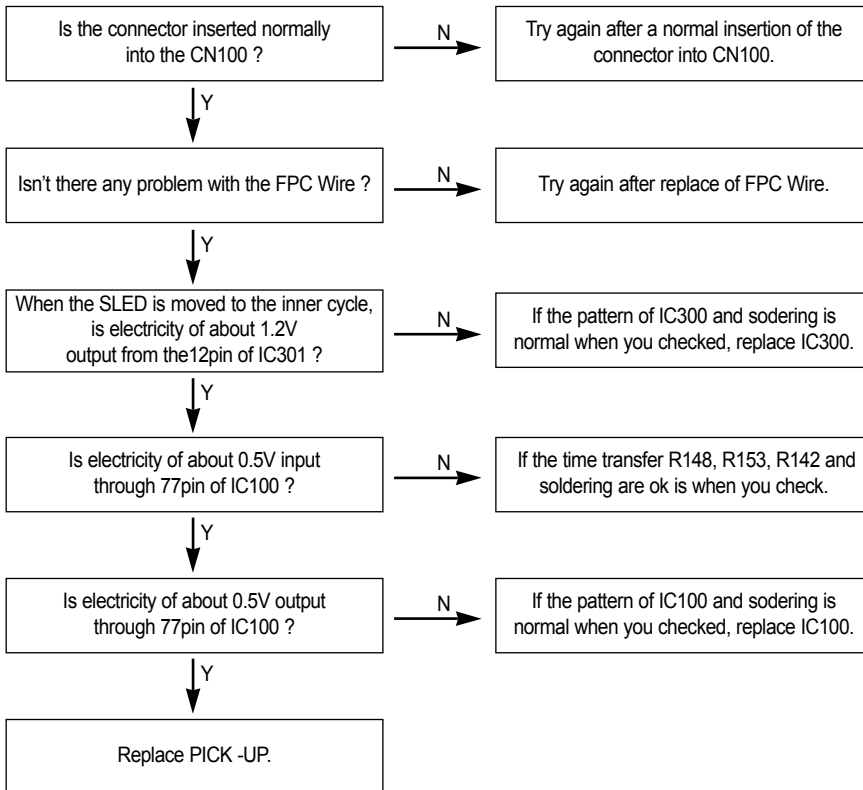
↓ Y

Replace stepping Motor.

No Tray open / close operation

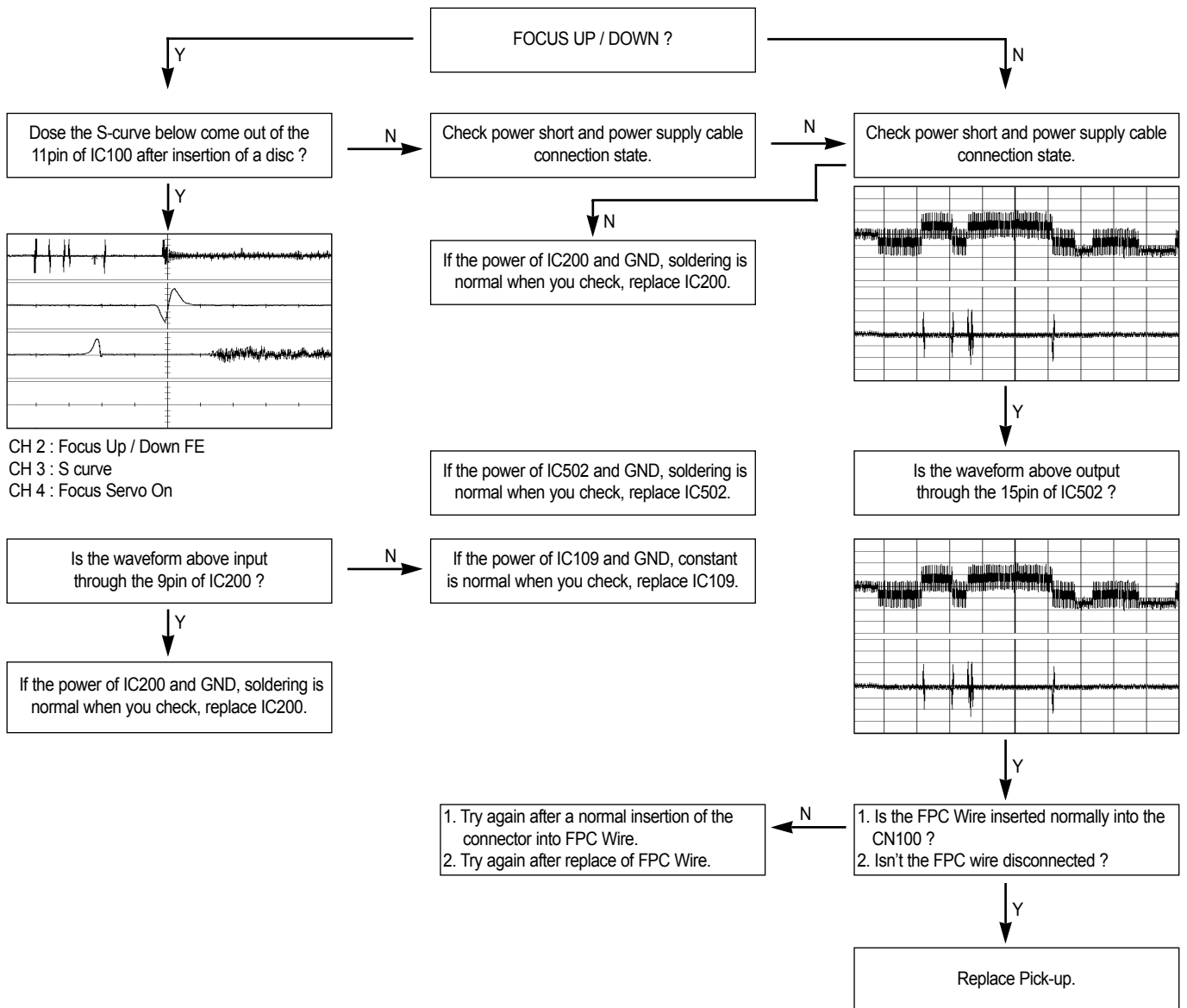


No LASER DIODE ON

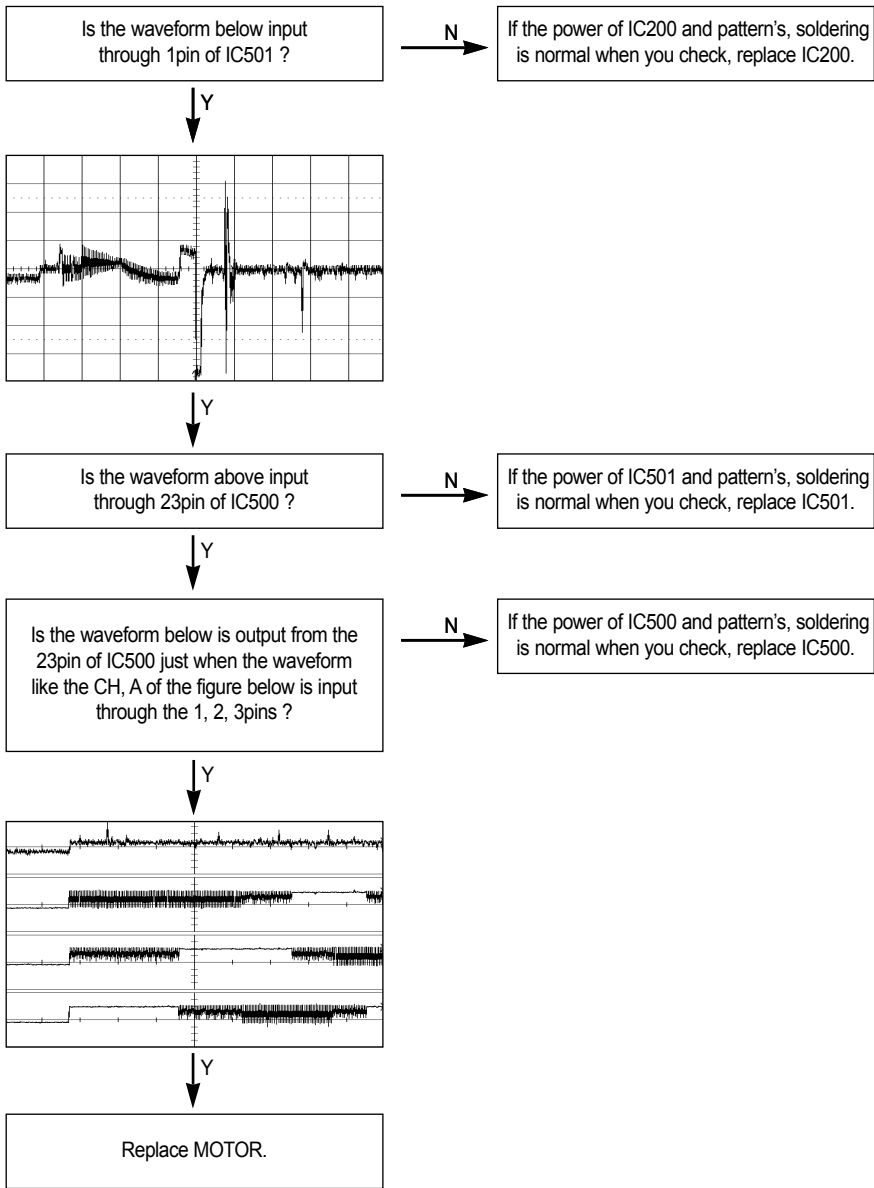


- The value of voltage(1.2V, 0.5V) can be modified slightly, depending on the result of power calibration or the media.

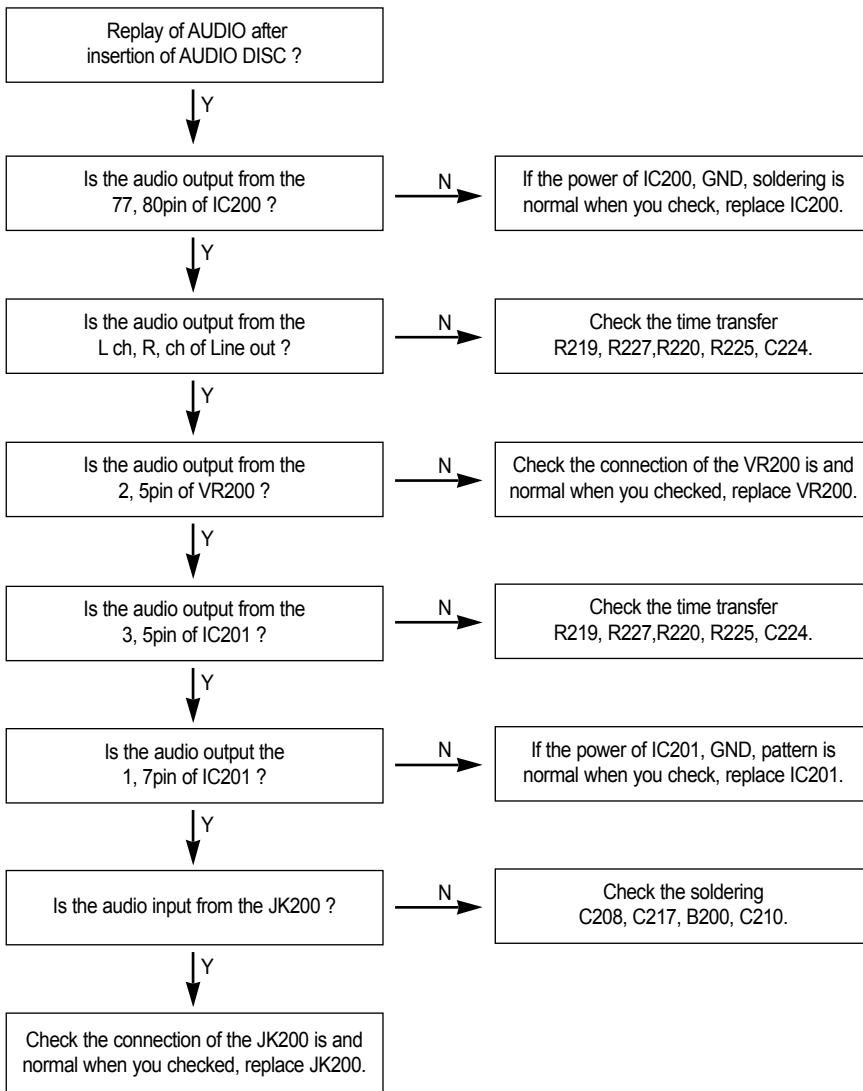
No FOCUS LOCK



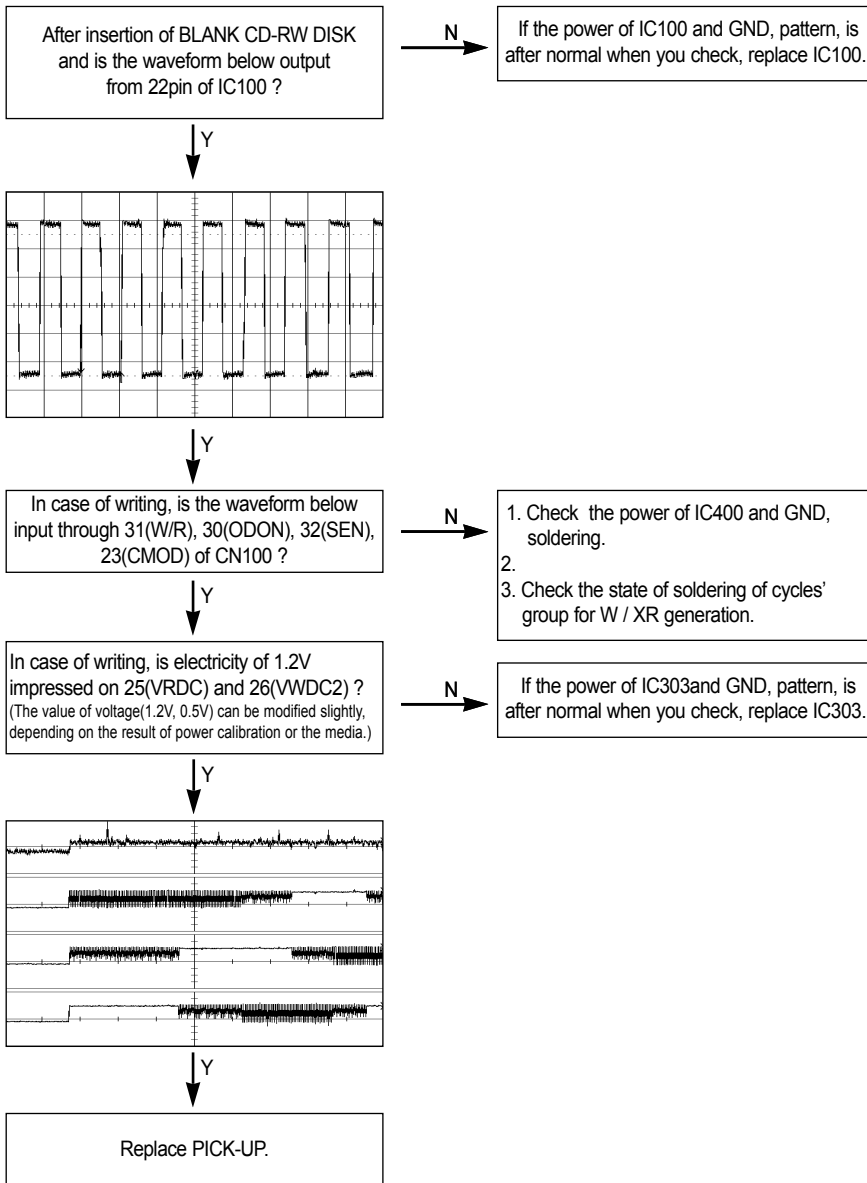
No SPINDLE MOTOR ROTATION



No AUDIO OUTPUT

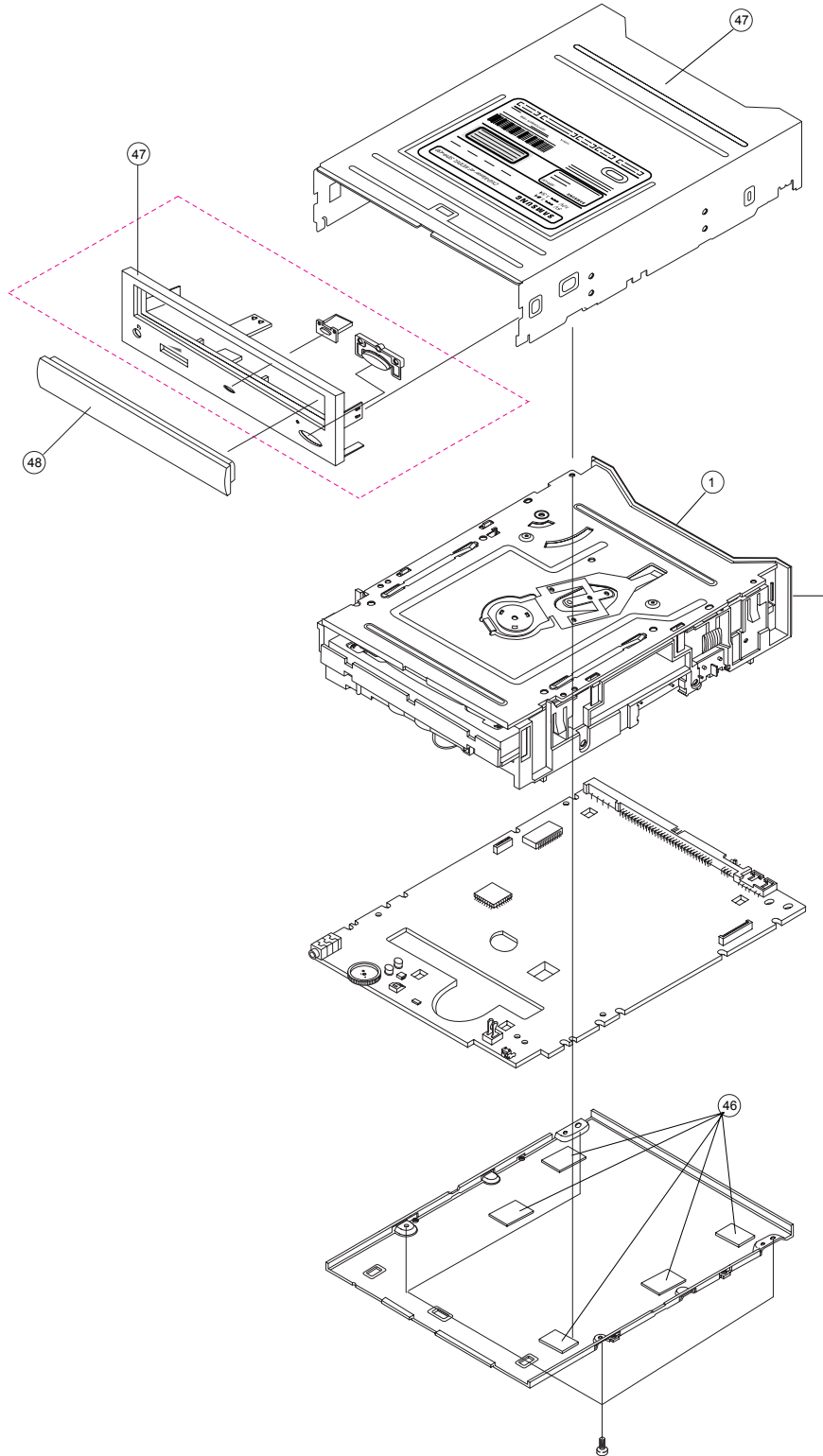


No WRITING

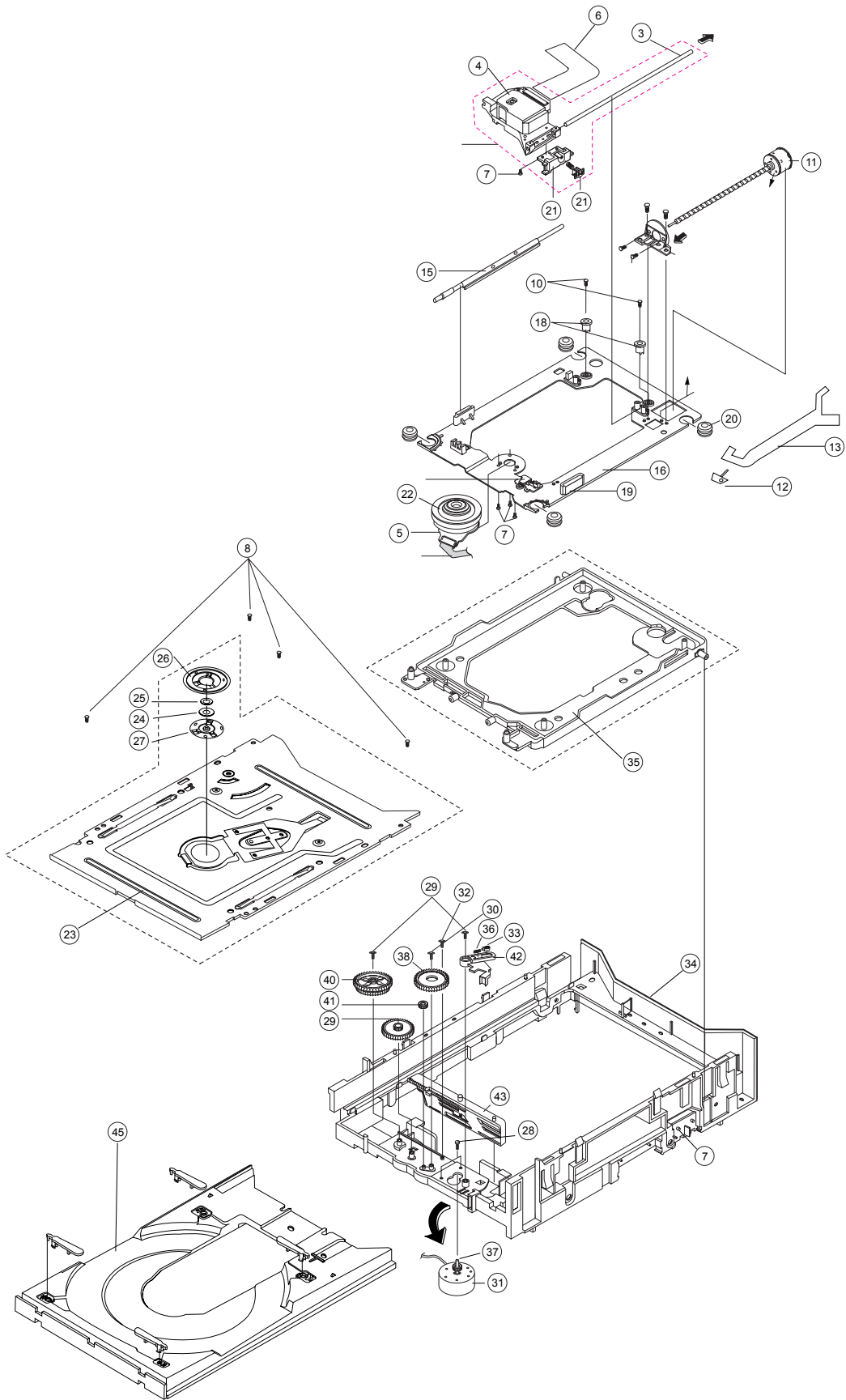


● Disassembly Diagram

1-1



1-2

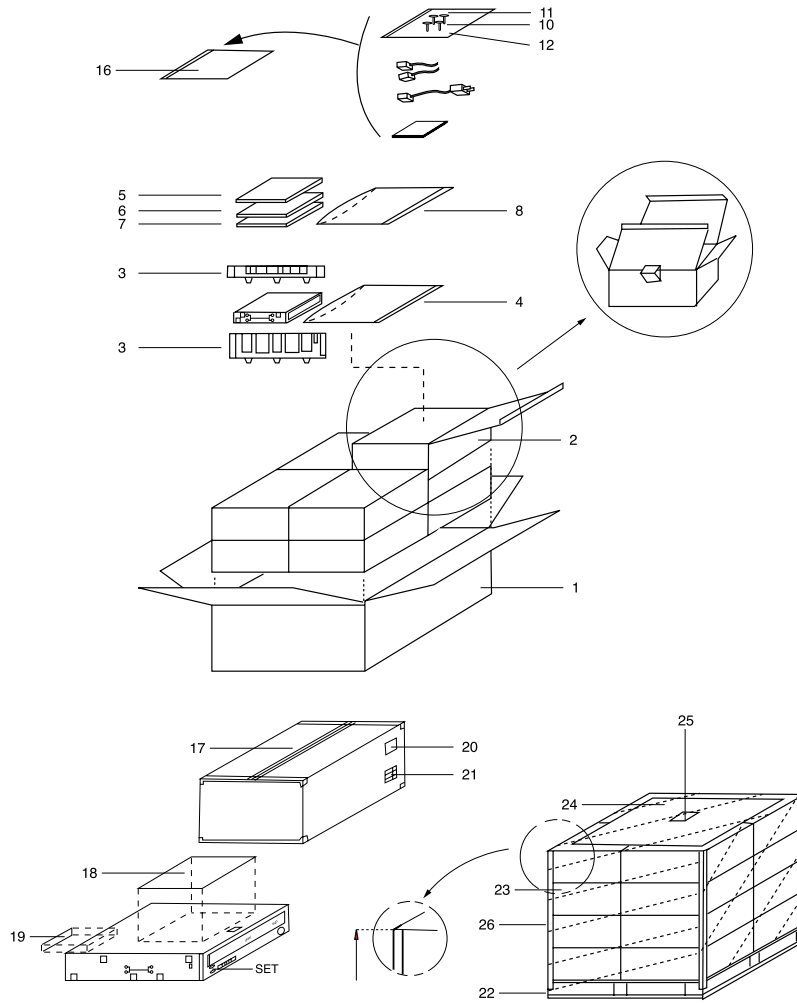


● Device Part List

NO	CODE	PART - NAME	SPEC	REMARK
1	BG97-00049A	ASSY-DECK	SCW-430/DOM,-,-	
2	AH60-10143U	SCREW-TAP TITE	DP,PH,+,SPEC,TAP1.7, L5, ZP	
3	AH61-50278A	SHAFT-P.U(R)	SUS420J2,OD3,L87,-,NTR,D	
4	BG30-00001A	PICK-UP	KRS-200A	
5	BG31-12007A	MOTOR-SPINDLE	BML3E5CRE, 12V/1.2A,60HZ	
6	BG41-00002A	FPC-SONY RW	POLYMIDE,T0.15,-,SCW-430	
7	BG61-10020A	SCREW-SP MOTOR	-,BHW	
8	BG60-12001R	SCREW-TAP TITE	PH,-,SPEC	
9	BG97-00053A	HOLDER-FPC	-,POM,-,-,-,DDR4	
	BG97-00053A	ASSY-BRKT-M	SCW-430,ASSY,CD-RW	
10	AC60-10059A	SCREW-TAPPING	BH,+,-,1.7,X5,ZPC2	
11	BG31-12013A	MOTOR-FREEDING(STEP)	MASP020,12V/0.75A,60	
12	BG34-10001A	SWITCH-DETECTOR		
13	BG41-20050W	FPC-DECK	POLYMIDE,-,-,DDR-4	
14	BG60-12001P	SCREW-MACHINE	;,-,-,-,M1.7,2.5,-,-,WHT	
15	BG61-00013A	GUIDE--PICK	UP;-,SUS+POM,-,-,-,SCW-430	
16	BG61-12003A	BRACKET-DECK	M;-,SECC+POM,DDR-4	
17	BG61-20030A	HOLDER-MOTOR	DIE,-,-,-,DDR-4	
18	BG61-20031A	HOLDER-CAM	,POM,-,-,-,DDR-4	
19	BG69-12009A	PAD-DEK	DDR-4,PORON,T3.0,L14.5,5,BLK,L	
20	BG73-10110A	RUBBER-INSULATOR	-,-,DDR-4,IIR	
21	BG97-00054A	ASSY-SLIDE STEP	SCW-430,ASSY,CD-RW	
	BG61-00008A	HOLDER-SLIDER	-,PC(20%),-,BLK,D4C,DDR-4	
	BG61-00041A	SHAFT-STEP	303,-,-,-,-,SW-204B	
	BG61-60039A	SPRING-STEP	WPB,-,-,-,DDR-4	
	BG66-80002A	SLIDER-STEP	-,NW-02,-,-,-,DDR4	
22	BG97-00055A	ASSY-TURN TABLE	;SCW-430,ASSY,CD-RW	
	BG61-10031A	BRACKET-MAGNET	-,SECC,-,T0.8,-,-,DDR-4	
	BG66-00007A	TURN-TABLE	;C3604BD,-,-,CD-RW,SCW-430	
	BG73-10114A	RUBBER-TURN TABLE	CR,16,DDR-4,-	
23	BG98-12002N	ASSY-MAIN CLAMPER	DDR-4, -	
	BG61-20029A	BASE-CLAMPSECC	T0.6,-,-,-,DDR-4	
	BG61-60036A	SPRING-TENSION	SUS304 WPB,-,-,-,DDR	
	BG69-10111A	PAD-MAIN CLAMPER	DDR-4, CHAMUDE, T0.6,3,3,BL	
	BG98-12002P	ASSY-CLAMP		
24	BG33-30001D	MAGNET-CLAMPER	13.5x6x1.1	
	BG61-10030A	BRACKET-CLAMP	-,SUS430,-,0.6,-,-,DDR-4	
25	BG61-10031A	BRACKET-MAGENET	-,SECC,-,T0.8,-,-,DDR-4	
	BG61-60037A	APRING-CLAMPER	WPB,-,-,-,DDR-4	
26	BG66-90013A	CLAMPER-UPPER	POM,-,-,-,DDR-4	
27	BG66-90014A	CLAMPER-LOWER	POM,-,-,-,DDR-4	
	BG98-12002Q	ASSY-HOUSING		
28	AC60-10027A	SCREW-MACHINE	BH,+,-,M1.7,3,FZB,SWRCH	
29	AH60-10143U	SCREW-TAPTITE	DP,PH,+,SPEC,TAP1.7,L5,ZP	
30	AH60-10151A	SCREW-TAPTITE	DP,SPEC6.8	
31	BG31-10002B	MOTOR-DC DC		
32	BG60-12001R	SCREW-TAPTITE	DP,PH,-,SPEC	

NO	CODE	PART - NAME	SPEC	REMARK
34	BG97-00049A	CHASSISS-MAIN	-,ABS,-,-,-,DDR-4	
35	BG61-10033A	CHASSISS-SUB	PC,-,-,-,-,DDR-4	
36	BG61-60038A	SPRING-LEVER	WPB,-,-,-,-,DDR-4	
37	BG66-20139A	GEAR-MOTOR	-,POM(M90-44),-,-,-,-,DDR-4	
38	BG66-20140A	GEAR-A	PA(L-1724K),-,-,-,-,	
39	BG66-20141A	GEAR-B	-POM(M90-44),-,-,-,-,DDR-4	
40	BG66-20142A	GEAR-TRAY	-,NW-02,-,-,-,-,DDR-4	
42	BG66-30017A	LEVER-SWITCH	-POM,-,-,-,-,DDR-4	
43	BG66-80001A	SLIDER-CAM	SAM;-,-,DURALEX	
44	BG69-12008A	PAD-SUB	DDR-4,EVA+PE,T1.2,10,6,-,-,-	
45	BG98-12002T	ASSY-TRAY		
	BG66-32004A	LEVER-VERTICAL	-,PC/ABS,T1.2,L26,10.6,-,-,-	
	BG66-90016A	TRAY-DISC	-,PC+ABS,-,-,-,-,DDR-4	
46	BG97-00110A	ASSY-COVER BOTTOM	BOTTOM;SW-204B,SECC	
	BG63-30029A	COVER-BOTTOM	-,SECC,-,-,T0.6,-,-,-,DDR-4	
	BG73-00006A	RUBBER-IC	PAD	
	BG73-00007A	RUBBER-IC	*	
	BG73-00008A	RUBBER-IC	PAD	
47	BG97-00107A	ASSY-PANEL FRONT	SW-204B,-,SW-204B	
	BG64-00010A	PANEL-FRONT	GRY,-,DDR-4	
	BG64-10350A	KNOB-EJECT	V0,-,-,-,-,DDR-4	
	BG67-10314A	LENS-LED	MILKY(H1855M),-,-,-,	
48	BG64-00009A	DOOR-TRAY	GRY,C7096,DDR-	

● Packing Diagram and Part List



NO		CODE-NO	DESCRIPTION	SPECIFICATION	Q'TY
1		BG69-00033A	MASTER CATON-BOX	DM3	1/8EA
2		BG69-00032A	PACKING-CASE	SW-1 MANILA 240g	1EA
3		BG69-00034A	CUSHION-SET	EPS	2EA
4		BG69-30305A	BAG-PE	T0.05	2EA
5	ASS'Y	BG46-00002A	DISC-OPTICAL(R)	CD-RW 120MM	1EA
6		BG46-00003A	DISC-OPTICAL(RW)	CD-R 120MM	1EA
7		BG46-00004A	DISC-OPTICAL(SOFT)	CD DIRECTOR 120MM	1EA
8		BG69-30307A	BAG-PE	T0.05	1EA
9	ASS'Y	BG68-00062A	MANUAL-USERS		1EA
10		BG95-50004A	ASSY-SCREW		1EA
11		BG60-12001H	SCREW-MACHINE	M3 * 6	4EA
12		BG39-30002A	BAG-PE		1EA
13		BG39-30002A	CABLE-IF	SR 380MM	1EA
14		BG39-42001A	CABLE-WIRE HARNESS	4P, 3P, N, UL254/UL 1061	1EA
16		BG69-30307A	BAG-PE	T0.05	1EA
17		AH02-10003A	TAPE-MASKING	PP-BEING	0.34M
18		BG68-00081A	LABEL-RATING	SW-204B/EX2, ART PAPER	1EA
19		BG68-50005A	LABEL-QMS	ART PAPER	1EA
20		BG68-50129A	LABEL-BAR CODE	EXP MODEL, ART PAPER	1/8EA
21		BG68-50081A	LABEL-BUYER	ART PAPER	1/8EA
22		BG69-50025A	PACKING PALLET	WOOD 1195*1007*140	1/128EA
23		BH69-30002B	BAG-PE(PE-FILM)	LDPE T0.02(CLEAN WRAP)	0.2MT
24		BG69-10104A	BOX-PAD	SW-2 YEL	1/128A
25		BG68-50130A	LABEL-PID	MOJO 2S	
26		BG69-00027A	PAD-EDCE	1330*50*50	4/128EA

● Electrical Part List

CAPACITOR

CODE NO	QTY	Location Number	Part Name	Spec
2203-000925	3	C101,C104,C120	CER-CAP	0.47
2203-000257	9	C102,C105,C135,C207,C209, C220,C223,C421,C513	CER-CAP	0.01
2203-000041	3	C103,C227,C228	CER-CAP	10P
2203-000189	76	C106,C110,C114,C115,C117, C118,C126,C127,C130,C132, C140,C146,C148,C151,C161, C202,C203,C204,C212,C213, C216,C225,C226,C229,C230, C300,C301,C302,C303,C304, C305,C307,C308,C309,C310, C311,C316,C317,C400,C401, C402,C403,C404,C405,C406, C407,C408,C409,C410,C413, C414,C415,C416,C418,C419, C420,C505,C509,C510,C511, C512,C514,C518,C524,C525, C527,C528,C529,C537,C600, C602,C606,C607,C608,C609, C610	CER-CAP	0.1
2203-001634	5	C107,C123,C137,C210,C219	CER-CAP	0.033
2203-001630	6	C108,C109,C113,C612,C614, C616	CER-CAP	0.33
2203-005105	2	C138,C111	CER-CAP	680P
2203-002793	6	C112,C129,C133,C211,C214, C221	CER-CAP	1(GRM40)
2203-000491	5	C116,C153,C164,C224,C231	CER-CAP	2200P
2203-000888	5	C119,C125,C314,C535,C536	CER-CAP	4700P
2203-001596	4	C121,C162,C299,C611	CER-CAP	2.2
2203-000998	1	C122	CER-CAP	47P
2203-001083	1	C134	CER-CAP	5P
2203-000140	4	C141,C143,C158,C159	CER-CAP	1500P
2203-000236	3	C142,C155,C515	CER-CAP	100P
2203-000357	1	C145	CER-CAP	150P
2203-000715	4	C152,C156,C157,C160	CER-CAP	3300P
2203-001052	1	C154	CER-CAP	560P
2203-000372	2	C205,C163	CER-CAP	0.015
	18	R115,R128,C200,C201,R311, R321,R406,R516,C523,C526, R602,R604,IC605,C617, C618, R400, R401, NR400		OPEN
2203-000384	2	C312,C313	CER-CAP	15P
2203-002115	1	C411	CER-CAP	0.068
2203-001211	1	C412	CER-CAP	8200P
2203-000062	3	C504,C538,C539	CER-CAP	0.047
2203-001656	1	C516	CER-CAP	470P
2203-001640	1	C530	CER-CAP	390P
2203-005015	2	C531,C532	CER-CAP	0.15
2203-001103	1	C534	CER-CAP	6800P
2404-000304	1	C615	TANTAL-CAP	22/6.3
2404-001001	2	C215,C218	TANTAL-CAP	10/6.3
2402-000156	1	C315	AL-CAP	4.7/35
2402-001059	1	C604	AL-CAP	220/6.3
2402-000008	10	C128,C206,C222,C306,C417, C507,C508,C601,C603,C613	AL-CAP	47/16
2402-000136	1	C605	AL-CAP	22/16

IC

CODE NO	QTY	Location Number	Part Name	Spec
BG14-10001M	1	IC100	IC-ASP	AK8563
1201-000200	8	IC101,IC104,IC105,IC106, IC107,IC109,IC504,IC601	OP AMP	NJM3414AV
0801-001095	2	IC203,IC102	IC-LOGIC	74HC4066
0801-002279	3	IC103,IC117,IC501	IC-LOGIC	74VHC4053
0801-000001	2	IC108,IC119	IC-LOGIC	74HC08
0801-002414	2	IC110,IC123	IC-LOGIC	TC4W53FU
0801-002143	2	IC111,IC112	IC-LOGIC	TC7S32F
0801-000789	1	IC113	IC-LOGIC	TC7W00FU
0801-002435	1	IC114	IC-LOGIC	TC7W66FU
1001-001003	4	IC116,IC121,IC202,IC506	IC-LOGIC	TC4S66
0801-000397	1	IC118	IC-LOGIC	74HC04
0801-000303	6	IC122,IC232,IC233,IC306 IC310, IC311	IC-LOGIC	TC7S08F
0904-001306	1	IC200	IC-DSP	TC9450AF
1201-001373	1	IC201	IC-H/P AMP	BH3541F
0903-001128	1	IC300	IC MICOM	H8S/2350
1106-000212	1	IC301	IC-SRAM	
KM62256CLG-7				
1103-001153	1	IC302	IC-EEPROM(FLASH)	28SF040
BG11-12001B	1	IC303	IC-EEPROM	AK9844
1293-001394	1	IC305	IC-RESET	ELM9735
BG14-10001P	1	IC400	IC-ENDEC	RL5E808B
1105-001138	1	IC401	IC-DRAM	
KM416C1204CT-5				
0801-002353	1	IC402	IC-LOGIC	74VHCT00
BG14-10001Q	1	IC500	IC-SPM DRIVE	BD6661FV
1003-001178	1	IC502	IC-ACTUATOR DRIVE	BA5983FP
1003-001177	1	IC503	IC-TSM DRIVE	M54678FP
1203-001293	1	IC602	IC-REGULATOR	BA033FP
1203-001500	1	IC603	IC-REGULATOR	PQ20WZ51
1203-001641	1	IC604	IC-REGULATOR	BA033F

RESISTER

CODE NO	QTY	Location Number	Part Name	Spec
2011-000002	4	NR402, NR403, NR404, NR405	R-CHIP (ARRAY)	22(A)
2007-001026	3	R101, R107, R163	R-CHIP	560K
2007-000097	13	R102, R108, R113, R116, R131, R194, R211, R213, R220, R225, R540, R541, R544	R-CHIP	47K
2007-000078	2	R103, R109	R-CHIP	1K
2007-000126	1	R104	R-CHIP	4.3K
2007-000103	6	R105, R138, R182, R183, R186, R187	R-CHIP	120K
2007-001161	4	R106, R185, R188, R202	R-CHIP	75K
2007-000637	1	R110	R-CHIP	270K
2007-000074	4	R111, R206, R402, R407	R-CHIP	100
2007-000070	13	R112, R179, R204, R215, R310, R410, R420, R534, R606, R607, R608, R609, C124	R-CHIP	0
2007-000104	6	R114, R125, R197, R198, R526, R530	R-CHIP	150K
2007-000124	8	R117, R145, R191, R214, R317, R318, R527, R529	R-CHIP	2.2K

CODE NO	QTY	Location Number	Part Name	Spec
2007-000072	1	R118	R-CHIP	47
2007-000090	50	R119,R123,R134,R157,R159, R160,R161,R173,R190,R192, R200,R201,R209,R212,R218, R221,R229,R301,R302,R305, R307,R308,R313,R314,R315, R316,R319,R320,R322,R323, R324,R325,R421, R422,R428,R429,R430,R431, R432,R505,R506,R545,R548, R549,R550,R600,R601,R603, R605,R612	R-CHIP	10K
2007-000065	3	R120,R156,R228	R-CHIP	2.2M
2007-000120	1	R121	R-CHIP	680
2007-000102	16	R122,R181,R184,R195,R199, R217,R232,R306,R513, R514,R517,R520,R524,R528, R531,R537	R-CHIP	100K
2007-000368	1	R231	R-CHIP	130K
2007-000118	1	R124	R-CHIP	390
2007-000084	5	R126,R133,R144,R174,R508	R-CHIP	4.7K
2007-000131	1	R127	R-CHIP	91K
2007-000109	5	R129,R141,R148,R176,R189	R-CHIP	1M
2007-000107	2	R137,R171	R-CHIP	470K
2007-001179	1	R140	R-CHIP	8.2K
2007-000106	5	R143,R151,R180,R539,R542	R-CHIP	220K
2007-000655	3	R146,R149,R543	R-CHIP	27K
2007-000101	1	R147	R-CHIP	82K
2007-000134	1	R150	R-CHIP	33K
2007-001007	1	R152	R-CHIP	51K
2007-001114	1	R153	R-CHIP	680K
2007-000080	2	R611,R154	R-CHIP	2K
2007-000805	2	R193,R155	R-CHIP	36K
2007-000094	4	R170,R175,R207,R208	R-CHIP	22K
2007-000075	2	R172,R230	R-CHIP	220
2007-000105	1	R177	R-CHIP	200K
2007-000092	1	R196	R-CHIP	15K
2007-000381	1	R203	R-CHIP	13K
2007-000091	1	R205	R-CHIP	12K
2007-000082	1	R216	R-CHIP	3.3K
2007-000122	2	R219,R227	R-CHIP	1.2K
2007-000882	1	R222	R-CHIP	4.7
2007-000965	3	R223,R327,R538	R-CHIP	5.1K
2007-000799	1	R233	R-CHIP	360
2007-000402	3	R234,R303,R304	R-CHIP	150
2007-000093	1	R309	R-CHIP	20K
2007-001656	1	R312	R-CHIP	16K
2007-000088	1	R326	R-CHIP	7.5K
2007-001093	1	R403	R-CHIP	620
2007-000083	1	R404	R-CHIP	3K
2007-000071	2	R405,R412,	R-CHIP	22
2007-000115	10	R408,R409,R411,R413,R414 R416,R417,R418,R419,R415	R-CHIP	82
2007-000113	5	R423,R424,R425,R426,R427	R-CHIP	33
2007-000539	1	R433	R-CHIP	200
2007-001134	2	R500,R509	R-CHIP	68
2007-000228	4	R501,R502,R503,R504	R-CHIP	1.2(MCR18)
2007-000034	4	R512,R515,R519,R523	R-CHIP	43K

CODE NO	QTY	Location Number	Part Name	Spec
2007-000965	4	R532,R533,R535,R536	R-CHIP	1(MCR18)
2007-000079	1	R610	R-CHIP	1.8K

ETC.,

CODE NO	QTY	Location Number	Part Name	Spec
AH34-22001B	1	SW302	OPEN/CLOSE SWITCH	OC SW
1404-001127	1	TH300	THERMISTER	NTH5G1M42B104J04TH
2101-001053	1	VR200	VOLUME	HP VOLUM
2802-001047	1	X200	RESONATOR	33.86MHz
2802-001068	1	X300	RESONATOR	20MHz
2804-001290	1	X400	OSCILLATOR	33.86MHz(OSC)
3301-001082	7	B200,B201,B600,B601,B602, B603,B604	BEAD	BEADCIB32P600MEM
3708-001357	1	CN100	CONNECTOR	SONY NEW Ver
3711-003262	5	CN200,CN201,CN400,CN401, CN600	CONNECTOR	MIF62
3708-001254	1	CN500	CONNECTOR	17 HEADER
3711-000906	1	CN501	CONNECTOR	3 HEADER
3722-000107	1	JK200	H/PJACK	PHONEJACK
0601-001104	1	LD300	LED	SML-020MDT

● Block Diagram

