

SONY[®]
SERVICE MANUAL*US Model*
*Canadian Model**Serial No. 2005701 and later**Chassis No. SCC-A85A-B***SUPPLEMENT-2**

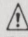
File this Supplement with the Service manual.

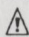
Note: This service manual is to be used with the PVM-2030
with S Video terminal.

INTRODUCTION

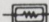
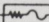
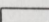

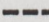
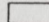

1. Schematic diagram modified.
(B₁, H₅, K board)
2. Mounting diagram modified
(B₁, H₃, H₅, K, UA, UB board)

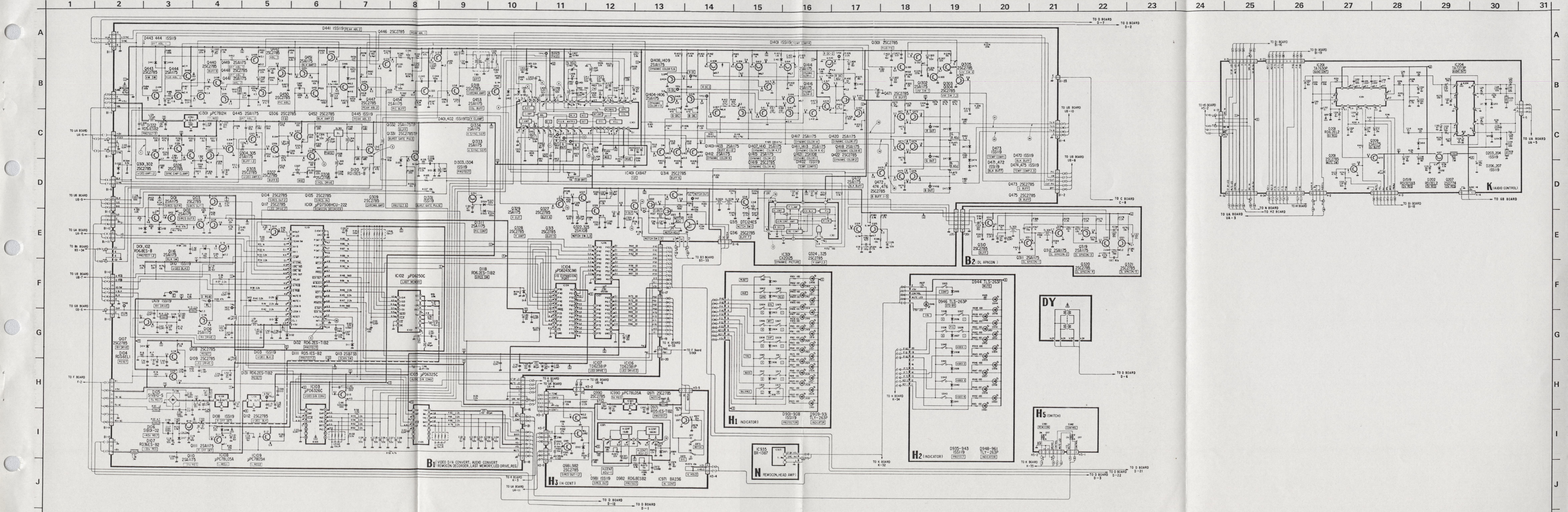
PDF SCANNED BY**CRT DATABASE**

Note: The components identified by shading and mark  are critical for safety. Replace only with part number specified.

Note: Les composants identifiés par une trame et par une marque  sont d'une importance critique pour la sécurité. Ne les remplacer que par des pièces de numéro spécifié.

Note:

- All capacitors are in μF unless otherwise noted. p: $\mu\mu\text{F}$ 50WV or less are not indicated except for electrolytics.
- All resistors are in ohms, 1/4W unless otherwise noted. k: 1000 Ω , M: 1000k Ω .
-  : nonflammable resistor.
- All variable and adjustable resistors have characteristic curve B, unless otherwise noted.
-  : fusible resistor.
- Δ : internal component.
-  : panel designation.
-  : B+ bus.
-  : B- bus.
- Voltages are dc with respect to ground unless otherwise noted.
- Readings are taken with a 10M Ω digital multimeter.
- Voltage variations may be noted due to normal production tolerances.
-  : adjustment to repair.
- Readings are taken with a color-bar-signal input.
- no mark: with NTSC(3.58MHz) color-bar signal received.
() : with DIGITAL color-bar signal received.
- Circled numbers refer to waveforms.
- B₃ board voltage readings are taken with inputting a color-bar S signal.



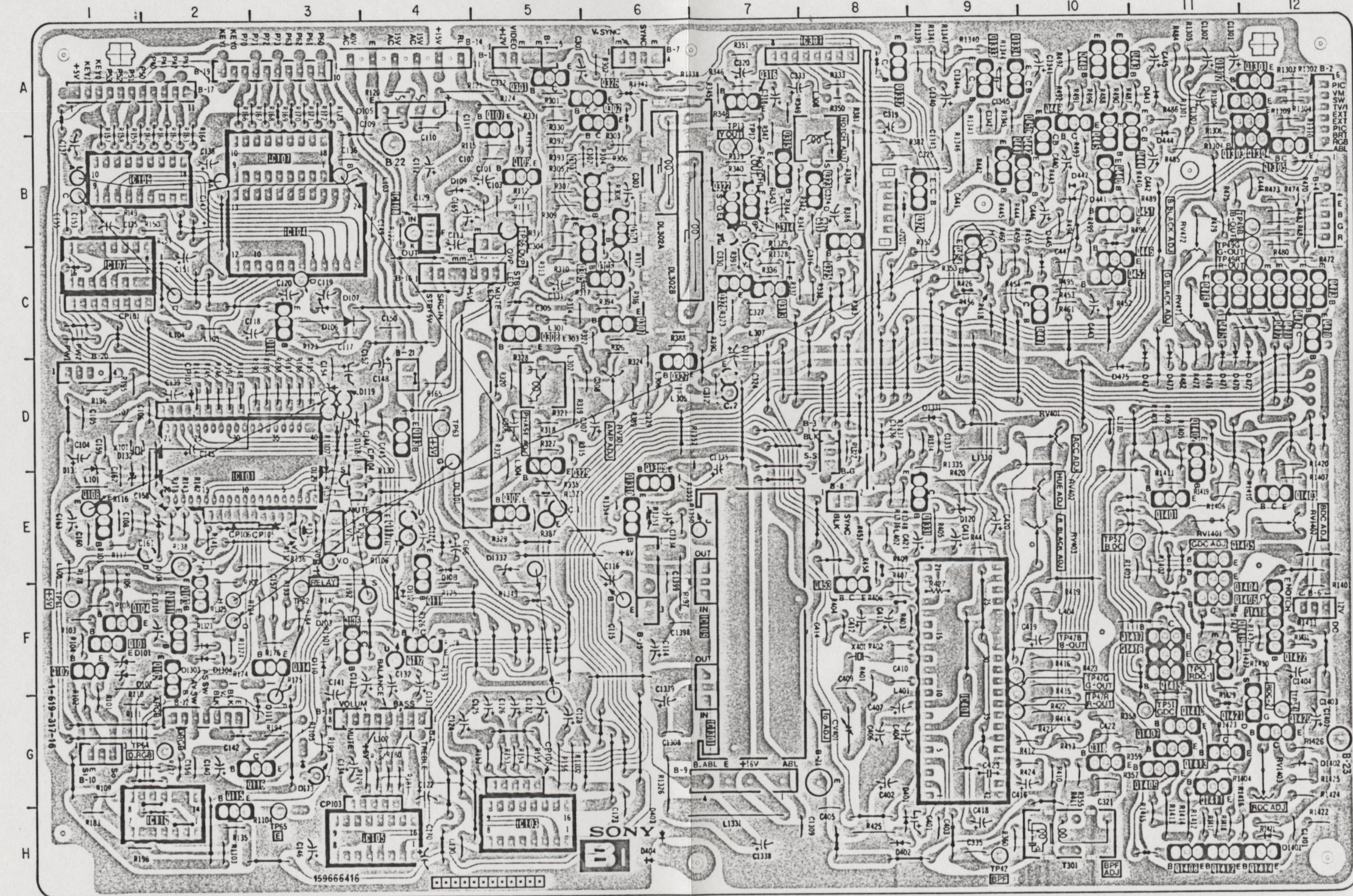
PRINTED WIRING BOARDS
- Conductor side -

VIDEO D/A CONVERT, AUDIO
CONVERT REMOCON DECODER,
LAST MEMORY, LED DRIVE, REG

B1

B1

- B₁ Board -



IC	Q451 B-10	Q461 H-9
C101 D-2	Q452 C-10	Q462 H-9
C102 C-1	Q453 F-8	Q463 B-10
C103 H-5	Q454 C-9	Q464 B-11
C104 B-3	Q470 C-12	
C105 H-4	Q471 C-12	Q445 C-10
C106 B-1	Q472 C-12	Q470 D-11
C107 B-3	Q473 C-12	Q472 D-12
C108 H-4	Q474 C-12	Q473 D-11
C109 F-7	Q475 C-11	
C301 A-8	Q476 C-11	Q474 D-11
C401 G-9	Q1301 A-12	Q1302 F-2
C1301 F-7	Q1302 A-12	Q1304 F-2
	Q1304 B-12	Q1331 D-9
	Q1305 B-12	Q1332 E-5
	Q1311 F-2	Q1401 H-12
	Q1331 E-9	Q1402 G-12
	Q1332 A-8	
	Q1333 A-9	
TRANSISTOR		
O101 F-1	Q1334 A-8	
O102 F-1	Q1335 A-8	
O103 F-2	Q1403 E-11	
O104 F-1	Q1404 F-11	
O105 F-2	Q1405 E-11	
O106 F-3	Q1406 F-11	
O107 A-5	Q1407 E-11	
O108 E-1	Q1408 H-11	
O109 C-3	Q1409 G-11	
O110 C-3	Q1410 G-11	
O111 F-4	Q1411 G-11	
O112 F-4	Q1412 J-11	
O113 D-4	Q1413 E-11	
O115 H-2	Q1414 E-11	
O116 G-2	Q1415 F-11	
O117 E-4	Q1416 F-11	
O301 A-5	Q1417 F-11	
O302 A-6	Q1418 F-12	
O303 B-6	Q1419 E-11	
O304 B-6	Q1420 G-12	
O305 C-6	Q1421 G-11	
O306 C-6	Q1422 F-12	
O307 C-6		
O308 C-5		
O309 E-5		
O313 C-7		
O314 B-7		
O315 B-7		
O316 A-7		
DIODE		
D318 G-10	D101 F-1	
D322 B-7	D102 F-1	
D323 B-8	D103 F-3	
D324 B-9	D104 E-2	
D325 C-8	D105 A-4	
D326 A-6		
D327 D-6		
D328 A-8		
D329 D-5		
D440 B-10		
D441 B-9		
D442 B-10		
D443 B-10		
D444 B-11		
D445 B-10		
D446 C-10		
D447 B-10		
D448 A-10		
D449 A-10		
D450 B-10		

AUDIO/VIDEO SW,
SYNC PROCESS,
TTL LOGIC

UA

H3

H5

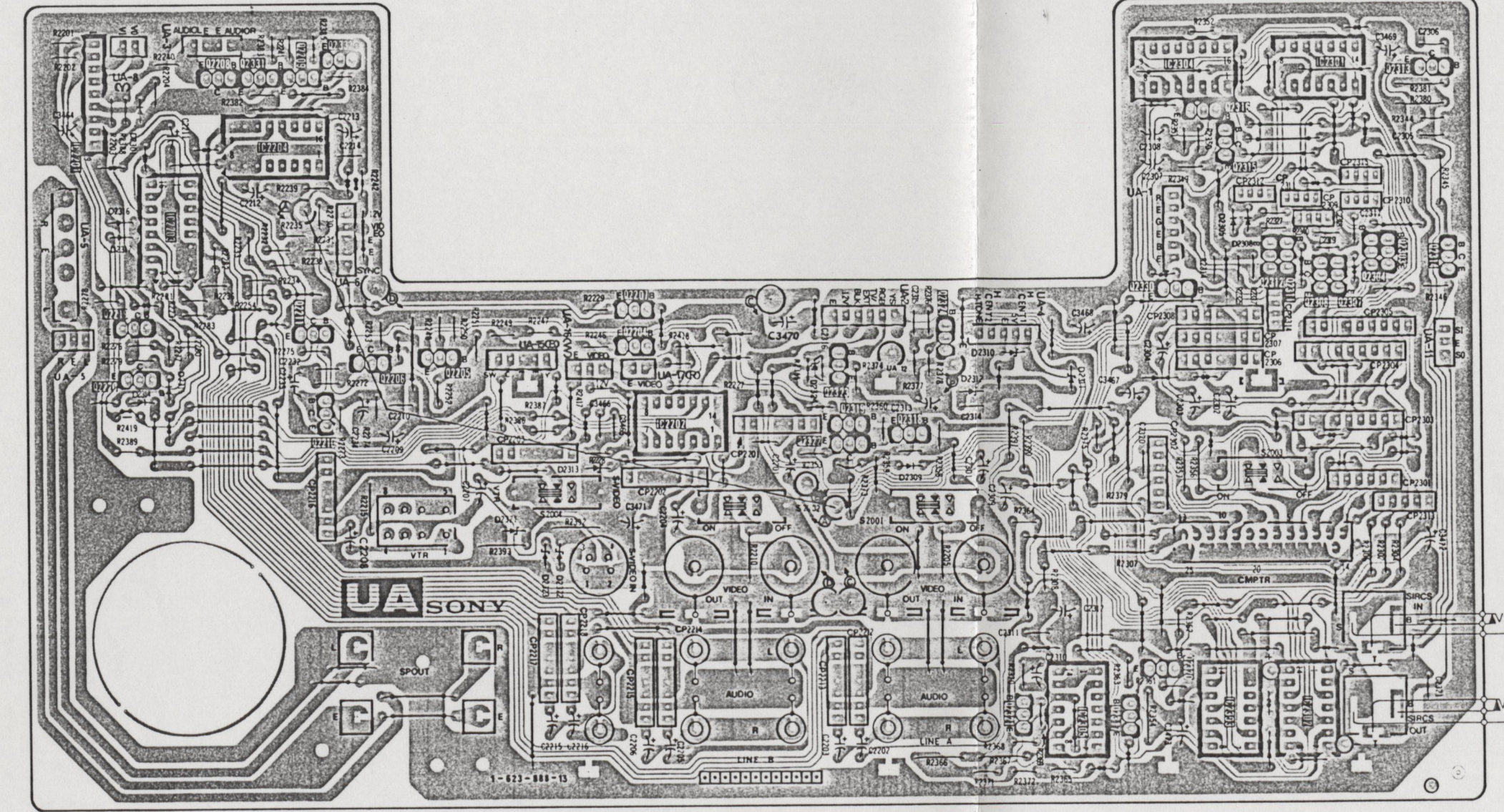
UA

H5

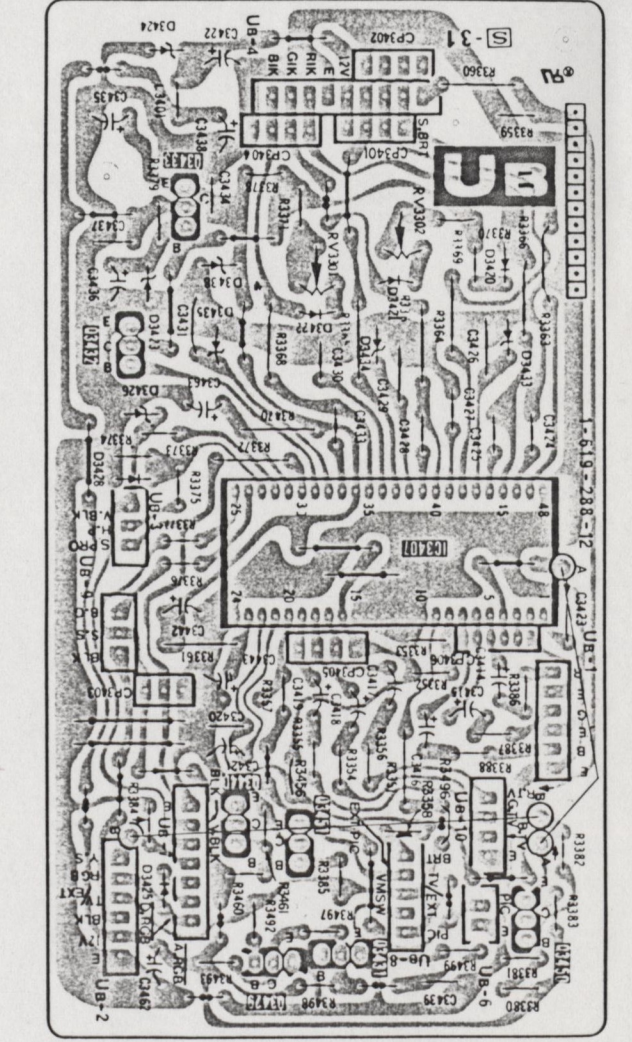
UB

AWB CONT
ABL, BLK SW

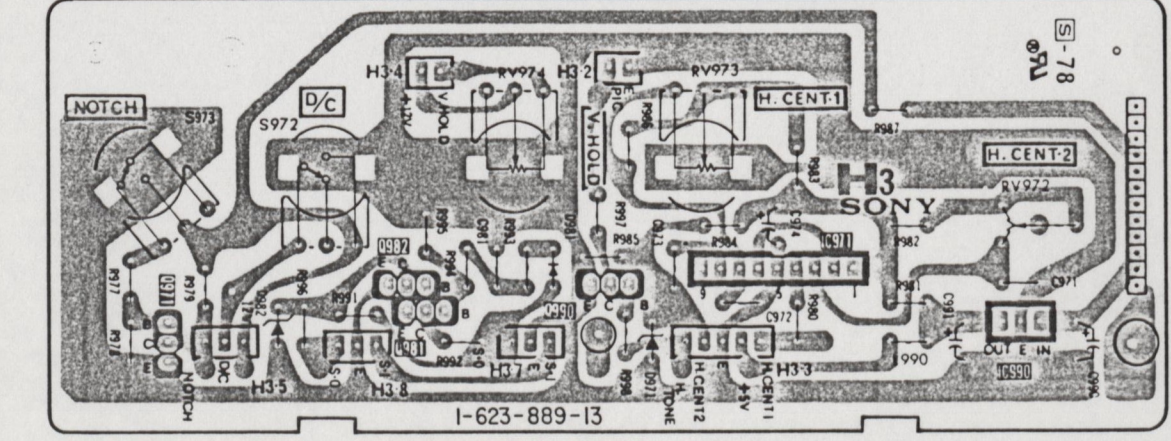
- UA Board -



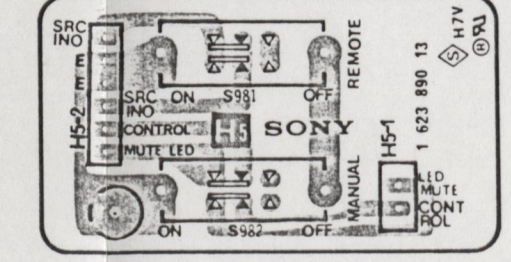
- UB Board -



- H₃ Board -



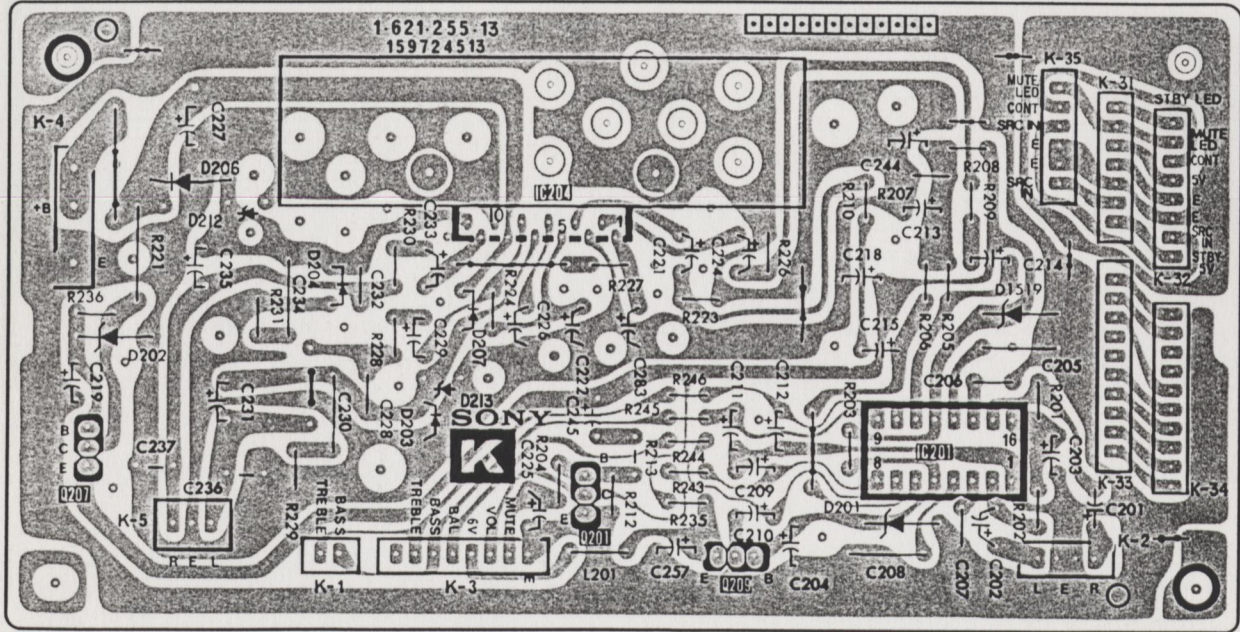
- H₅ Board -



K

[AUDIO OUT CONTROL]

- K Board -



ELECTRICAL PARTS LIST

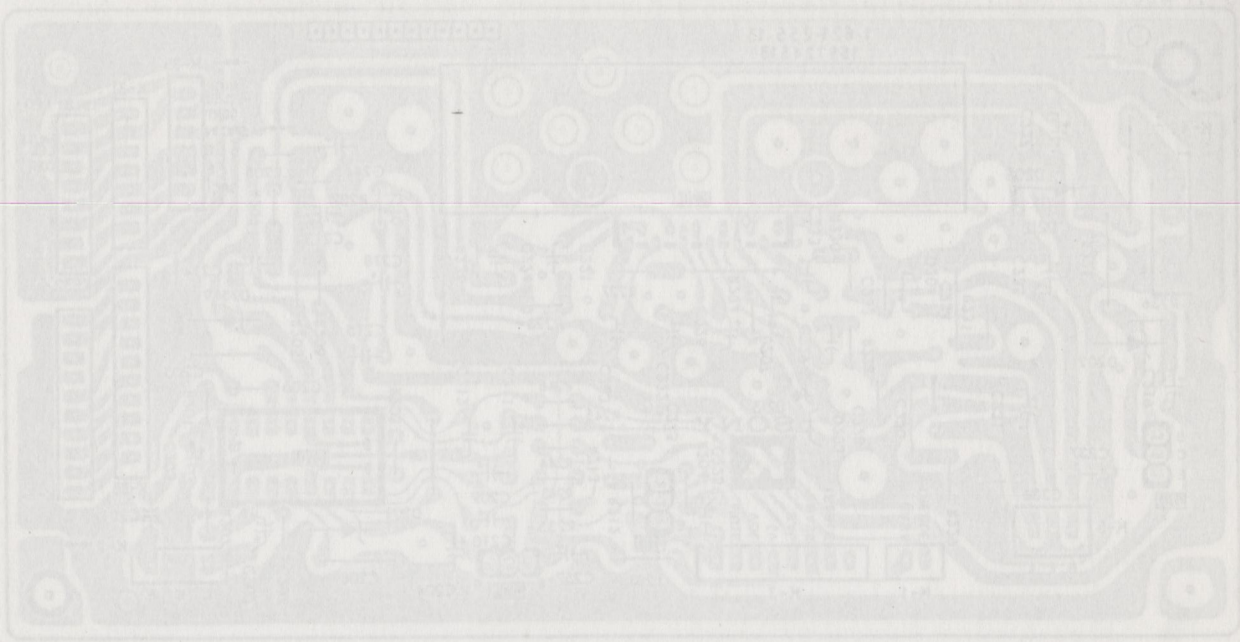
B₁ Board

R1104	1-249-433-11	22K	5%	1/4W	(ADD)
R198	_____				
IC110	_____				
Q115	_____				



[AUDIO, OUT CONTROL]

- B Board -



ELECTRICAL PARTS LIST

B Board

Q12							
IC110							
R198							
R1104	1-249-A33-11	22K	22	1/4W	(ADD)		